

St. HILARY PARISH FOUNDATION FOR ALL ST. HILARY PARISHIONERS, FRIENDS, AND DONORS

ANNUAL REPORT

FALL 2023
Volume 20

INVESTING IN OUR FUTURE

Sixty-three years ago, St. Hilary School was established as the first ministry of St. Hilary Parish. As it has grown, the school has served as a catalyst for the growth of the parish to its present size of over 3,000 households. The school is as vital to the vibrance of the parish as the parish is to the school it supports. Families have come to the school seeking an academically excellent Catholic faith-based education for their children and have immersed themselves in the larger parish community in the process.

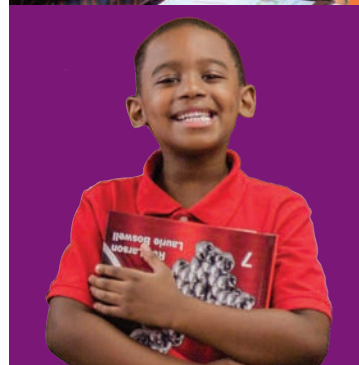
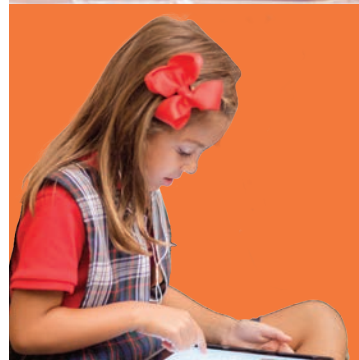
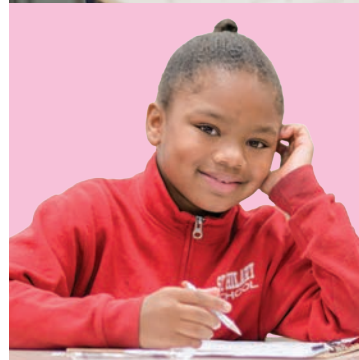
Behind the success of the two-time US Department of Education Blue Ribbon award-winning school are the teachers and educational staff who impact the lives of hundreds of students each day. At St. Hilary School, teaching is a higher calling. The school's teachers and educational staff not only train minds, they shape hearts and transform lives for Jesus Christ. The core of the school mission is to "keep Christ at the center of all that we do". In today's world, this is more important than ever, and St. Hilary School's teachers and educational staff live this mission every day. With the Catholic faith as their guide, they go far beyond being dedicated to their profession, nurturing students and building character by modeling love, kindness and compassion. Yet, these treasured employees have not always been compensated to a level reflective of their value.

It has long been a goal to pay the St. Hilary School faculty and staff a wage that equals approximately 80% of that earned by their counterparts working in the Copley-Fairlawn School District. Over time, however, the gap between that benchmark and the actual wages paid has widened. In October 2022, a group of teachers attended a meeting of the St. Hilary Parish Finance Council to present data on their salaries in comparison not only to those paid at other schools, but also to wages earned in other types of employment.

TIME FOR CHANGE

After hearing the staggering facts that employees working in the fast food industry and other similar occupations can earn more than St. Hilary School teachers, the consensus was that the time had come to take action. A commitment was made to increase the pay of St. Hilary School faculty and staff incrementally over a period of two years to bring it in line with the 80% of Copley-Fairlawn Schools

Cont'd. on p. 8





DIRECTOR'S **Message**

Wow! Has it really been 20 years since I began my work as Development Director with the St. Hilary Parish Foundation? Time flies when you're having fun!

In those 20 years, I have been blessed to witness the incredible generosity of donors that has enabled our Foundation to grow from \$1.3 million to over \$10.3 million, and I am truly grateful. Throughout the past two decades, donations of more than \$9.5 million have been made to the Foundation through a variety of forms and gift amounts.

Since the first distribution in 1979, the Foundation has invested more than \$5.3 million back into our church and school for a wide variety of much needed capital improvements, projects and programs, as well as tuition assistance, scholarships, and teacher salaries. Just from November 1, 2022 through October 31, 2023, the Foundation has distributed over \$387,119 for various needs such as church and school roofs, Horning Hall doors, tuition assistance, scholarships, technology, teacher salaries, Damascus retreats, and seminarian educational support. There is no way the Foundation would be able to accomplish all this and more without your ongoing support.

Ongoing support is what our St. Hilary Legacy Society is all about. In this issue, we celebrate the 20th anniversary of the St. Hilary Legacy Society and invite its membership to grow. Since the Legacy Society began in 2003, bequests totaling more than \$3.3 million have been received. It is heartwarming to hear from donors who have supported the Foundation in various ways through the years when they ultimately decide to make long-term commitments to the Foundation by way of planned or deferred giving arrangements. In addition to supporting the Foundation during their lifetimes, these very generous donors help ensure the financial future of St. Hilary Church and School well beyond their days here on earth. Working for the long-term viability of our church and school

has been my passion during my time as Development Director. I have been blessed to be an integral part of numerous large bequests, campaigns and projects. Notably, a sizeable bequest from late parishioner Jean Hauser continues to provide amenities for the church including new pews, kneelers, stained glass windows, flooring, paint, and acoustical treatment, plus Spiritual Center kitchen renovations, spiritual events such as Gaudete and Laetare Sunday Concerts, and more. Also memorable was our Crystal Commemorative Campaign, which raised \$1.28 million for the unrestricted needs of our school. Currently underway, with a \$3 million goal, is the Investing In Our Future Campaign to support our St. Hilary School educators. This campaign was undertaken to grow the Teacher Salary Fund, which was established at the Foundation in 2004, to support the salaries and benefits of our teachers and educational staff. In order to retain and recruit exceptional educators for our school, it is essential for this fund to grow so that we can pay our teachers a competitive salary.

I am so appreciative of all those who have helped the Foundation over the past two decades in a variety of ways. In addition to all of our donors, who have generously supported the Foundation, I am also very grateful to my extremely supportive Foundation Board; Fr. Steve Brunovsky; Debbie Sinopoli; Jennifer Sorrent; and the Investing In Our Future Campaign committee, led by chair Brianne Alaburda.

My heartfelt thanks to all of you for giving of your time, talents and treasure to support the St. Hilary Parish Foundation. You have made my job exceptionally rewarding over the past 20 years, and St. Hilary Church and School have been enriched because of your generosity.

Gratefully,
Diane Sarkis
St. Hilary Parish Foundation
Development Director

MEMORIAL AND TRIBUTE GIFTS ARE **Investment in Future**

Gifts that honor the memory of those who have gone before us can add to our Foundation, enhancing its ability to serve the St. Hilary community. Since November 1, 2022, gifts totaling \$135,918.05 have been made in memory of the following individuals whose obituaries mentioned the St. Hilary Parish Foundation or who were generously honored with memorial donations to the Foundation:

- | | |
|----------------------|-------------------------|
| James Aldrich | Lucy Luisi |
| Tina Buehrle | Jimmy Lyons |
| Carol Clemens | Maryann May |
| Charles Clemens | Frank Mellion |
| Janet DasVarma | Louis & Helen Mellion |
| Tom Dindo | Art Minkle |
| Florence Dziewisz | Kevin Neff |
| John Flocca | Kevin O'Neil |
| Jack & Eileen Fisher | Linda O'Neill |
| Ivan & Janet Frey | Agnes Ribes |
| Mary E. Leyden Green | Britt Rinehart |
| Betty Hearty | Leonard James Schnetzer |
| Larry Kern | Dan Unk |
| Jamie Kovarik | Jane Veltorf |

Gifts to the Foundation can be made not only to memorialize those who have passed away, but also to serve as an eloquent tribute to an individual during his or her lifetime. This type of gift can be the perfect way to commemorate a distinctive event or milestone, to honor an individual, or to present a symbolic gift to those with few needs and wants. Gifts totaling \$15,460.00 in honor of the following individuals have been made to the Foundation since November 1, 2022:

- | | |
|----------------------|----------------------------|
| Fr. Steven Brunovsky | Maureen Reilly |
| SHS Class of 1979 | St. Hilary Parish |
| Paul & Patti Hummel | St. Hilary School |
| Fr. Thomas Koegel | St. Hilary School Teachers |
| Cliff Oelschlager | Joe & Kathy Tartabini |
| Jamie Oelschlager | |



PASTOR'S **Message**

Dear Parishioners and Benefactors,

I recently read an interesting newspaper article about the durability of concrete used by ancient civilizations such as the Romans and Myans. The article revealed that modern scientists are studying the material structure of monuments like the Pantheon in Rome, which boasts a more than 2,000-year-old concrete ceiling, to discover the secret of their durability. It seems that the ancient builders added extra elements to their concrete mixture to give it water resistance, durability in changing seasons, and, in some cases, even self-healing properties. I found this fascinating! By comparison, modern concrete has a life span of only 50 - 100 years. If you were building a building, wouldn't you like it to last more than 100 years?

This concept of durability came to mind as I was thinking about our St. Hilary Parish Foundation. Like ancient concrete, it is in place for the long run! Unlike funds raised through offertory, which are used for the day-to-day operation of the parish, Foundation funds are raised, invested, and then slowly distributed so that they will exist in perpetuity. In order to keep the Foundation growing so it can continue to support the long-term needs of the parish and school for many years to come, donations are vital.

Hence, the Foundation invites parishioners to consider legacy giving. Making the Foundation a beneficiary of your will or mandatory IRA distribution allows you to leave a legacy gift whose impact will last forever, and these are just a few of the ways your estate plan can include philanthropy that benefits our St. Hilary community. Additionally, many families have taken advantage of giving to the Foundation through family named funds to support aspects of the parish, school, and PSR programs that they are passionate about. Examples of this include the named funds that provide scholarships to St. Hilary School students, a named Choir Fund and a named PSR fund. What legacy do you want your family or yourself to be known for? Consider legacy giving through the St. Hilary Parish Foundation and create a legacy that will last forever! On pages 4, 5 and 6 of this report, you can read more about legacy giving and the St. Hilary Legacy Society, now celebrating its 20th year!

Another current focus of the Foundation is the Investing In Our Future campaign in support of St. Hilary School teachers and educational staff, as featured on the cover of this report. Our educators go above and beyond the call of duty each day. Their salaries, however, have fallen far behind those of their public school counterparts over the years, and they are not compensated for all the extra things they do for our

students. Leading clubs and activities such as Mock Trial, Academic Challenge, Cooking Club, or the spring musical, or serving on one of the school's many staff committees, are all done without compensation. The \$3 million goal of the Investing In Our Future Campaign will help us create a more robust Teacher Salary Fund that will enable us to justly pay our teachers and educational staff for their excellent work, as well as all the extra activities that require much additional time and preparation. This fund will become part of the solid foundation on which to build the future success of our school.

Please join us in supporting the St. Hilary Parish Foundation! Maybe, like ancient concrete, your generosity will still stand strong two thousand years from now!

In Christ,
Fr Steve Brunovsky
Pastor

DID YOU **Know?**

- **The St. Hilary Parish Foundation oversees 68 funds.** These funds include the Unrestricted Endowment Fund, the St. Hilary School Unrestricted Endowment Fund, named funds, scholarship funds, tuition assistance funds, and other designated funds.
- **The Unrestricted Endowment Fund is comprised of gifts not designated for a specific purpose, and used for the greatest needs of the church and school.**
- **The St. Hilary School Unrestricted Endowment Fund is used for the greatest needs of the school.**
- **Named Funds can be established with a \$5,000 gift.** Funds may be designated as unrestricted, in which the Foundation Board determines the greatest needs and grants awards based on the particular fund, or as restricted, in which funds are used for a specific purpose.
- **The Foundation accepts donations throughout the year, and 100% of monies donated support the needs of St. Hilary Parish and School.**
- **The St. Hilary Parish Foundation was established in 1976 and has granted over \$5.3 to the church and school for improvements including capital improvements and equipment, programs, technology, scholarships, and tuition assistance.**
- **The Foundation has a Legacy Society for legacy giving, now in its 20th year.**
- **Visit us at www.StHilaryFoundation.org and follow us on Facebook for updates throughout the year.**



20 YEARS

FOUNDATION MARKS 20th Anniversary of Legacy Society

What if you had a legacy to leave, but kept it all to yourself? A hidden trove of treasure that was never shared? Think instead of the difference a gift of that treasure could make... a gift that could help ensure the financial stability of your parish long after you leave this earth. What an amazing tribute that would be not only to your parish, but to you! You have the opportunity of a lifetime to make that difference, leave that legacy and receive that tribute by becoming a member of the St. Hilary Parish Foundation's St. Hilary Legacy Society.

As the Foundation observes 47 years of stewarding and granting funds to ensure the longevity of the church and school, a significant milestone has been reached this year with the 20th anniversary of the Foundation's St. Hilary Legacy Society. Established in November 2003 for the purpose of recognizing those who make long-term commitments to the St. Hilary Parish Foundation through planned or deferred gift arrangements, the St. Hilary Legacy Society includes 14 donors who have made bequests totaling over \$3.3 million. These individuals have included the St. Hilary Parish Foundation in their estate planning, by naming the St. Hilary Parish Foundation as a beneficiary of their wills, life insurance policies or retirement accounts.

LEGACY SOCIETY MEMORIALIZED ON PLAQUE

Donors who make gifts through their estates have the opportunity to be recognized as Legacy Society members by having their names inscribed on a plaque that hangs near the parish office. Donors may also opt to remain anonymous if they so choose. Either way, these donors help to ensure the long-term financial stability of St. Hilary Church and School.

Seizing the opportunity to make a difference through legacy giving can come about in a number of ways, for a variety of reasons. St. Hilary Parish Foundation Board Vice President and Secretary Steve Hammersmith added a bequest to the Foundation's Unrestricted School Endowment in his will in 2016. By virtue of his gift, Steve became a member of the St. Hilary Legacy Society.

SUPPORT OF SCHOOL MOTIVATES GIFT

As the parents of three St. Hilary School alumni who attended the school from kindergarten through eighth grade, Steve and his wife Cathy value the foundation their children received. "We are strong supporters of Catholic education and believe that strong endowments are the only way to ensure the vitality of those schools," he says, explaining what motivated him to give to the Foundation in this way. Giving back to the school and parish has always been part of their



Stephen and Cathy Hammersmith

lives. As parishioners since 1985, the Hammersmiths have held various roles over the years. Cathy was the St. Hilary School nurse for about 15 years, and Steve was a member of the St. Hilary Parish Finance Council for about 10 years before taking his current role as a member of the Foundation board.

Similar motivation lies behind the legacy gift of Jim and Carolyn Hogan. The Hogans moved to Bath in 1979 and, although technically within St. Victor Parish, joined St. Hilary Parish specifically to enroll their boys in St. Hilary School. Through the years, the Hogans have continued their financial support of the parish and school, as well as participating in many activities of the parish, including Eucharistic Ministry, Homebound Ministry, Greeters, Stewardship Committee, Choir, Small Study Group, Arts, Knights of Columbus, Couples and Ladies Bridge, and, more recently, Angel Scholarship Fund Ambassadors.

The Hogans' commitment to the Legacy Society was made in 2014, when they directed a major portion of their end-of-life remaining funds from their donor-advised charitable fund to be donated to the St. Hilary Parish Foundation. Jim explains, "We plan to end our donor-advised charitable fund upon death in such a way as to direct the remaining funds into permanent legacy funds that most appropriately reflect our belief in Catholic values; in particular, Catholic education. The advantage of a final gift from a donor-advised charitable fund is that the original donation to this fund is tax deductible and the fund grows tax free up to the point of final distribution."

PAYING IT FORWARD BEYOND ONE'S LIFE

To those considering legacy giving, or those who may never have considered it, Steve Hammersmith says, "Designating legacy gifts to the Foundation at one's death is any easy way to provide 'pay-it-forward' support to the parish and the school." Jim Hogan adds that, "for people who believe, as we do, that the St. Hilary Parish Foundation has a very effective model for managing and distributing funds for the overall long-term financial health of St. Hilary Parish and School, and who wish to make an end-of-life donation to the longevity of the parish mission, a legacy donation to the St. Hilary Parish Foundation seems an ideal way to achieve continued support beyond their life. An early commitment to this end warrants permanent membership in the Legacy Society."



Jim and Carolyn Hogan

**If you are considering legacy giving,
please contact Diane Sarkis,
Development Director,
at 330-608-4787 for assistance
with your decision.**

LEGACY SOCIETY RECOGNIZES

Planned Giving



An important part of planned giving is ensuring that your contributions will continue to support your charitable interests through many generations. The St. Hilary Parish Foundation can help you achieve your long-term philanthropic goals and make an impact for those who come after you.

Donors who have made long-term commitments to the St. Hilary Parish Foundation through planned or deferred gift arrangements become members of the St. Hilary Legacy Society. Since the Legacy Society began in November 2003, bequests totaling more than \$3,344,831.10 have been received from or in memory of the following donors: John A. Bader, Margaret Banker, Ralph L. Bernard, Sr., Olive and Joseph Cairns, Mary Jean Carroll, Edward L. Cope, Dorothy D'Andrea, Helen and Richard Eichner, Joanne Harm, Jean Hauser, Larry Kern, Maryann May, Mary Metz, Antoinette Ruminski, and Eugene Wilde.

These gifts to the Foundation were made possible because the individuals behind them recognized what they could do to support their St. Hilary community and planned accordingly. Just as the Legacy Society members who have passed away have planned to help build the future, your gift, or a donation in your memory, can make a difference, too.

If you have remembered the Foundation in your will or as a beneficiary of a life insurance or retirement account, please let us know so we can welcome you into the St. Hilary Legacy Society. If you are considering one of these lifelong legacy options, please contact Diane Sarkis at 330-608-4787 for help with your decision.



PLANNING TO SUSTAIN Parish & School

By planning ahead, you can play a role in sustaining St. Hilary Parish and School for years to come. Your planning might include a personal contribution to add to those of others to help ensure the integrity of the St. Hilary community. Or, you might choose to give back by suggesting that others make gifts in your memory. All of these gifts can help to build and sustain our Foundation.

By including the St. Hilary Parish Foundation in your estate planning, you will guarantee that your past will live on and help to secure the future of St. Hilary Parish and School. Naming the St. Hilary Parish Foundation as a beneficiary of your will, life insurance policy or retirement account, or planning to suggest donations to the Foundation upon your death, will foster gifts that can help to ensure the ongoing financial stability of St. Hilary Parish and School. To learn more about options for planned giving, please contact Diane Sarkis, Development Director, at 330-608-4787.

THANK YOU FOR Your Generosity

Your donations totaling \$514,809.58 received between November 1, 2022 and October 31, 2023 help us to continue to provide vital annual support for our church and school. This support comes through restricted donations designated for specific purposes, needs and/or projects, as well as unrestricted gifts directed to the areas of greatest need. We are truly grateful for your faith-filled generosity to the following funds:

• Unrestricted Funds	\$ 131,507.43
• Specified Parish Funds	\$ 153,000.05
• SHS Unrestricted Funds	\$ 19,187.00
• Specified SHS Funds	\$ 122,754.29
• SHS Scholarship/Tuition Assistance Funds	\$ 11,531.50
• SHS Specified Scholarship Funds	\$ 76,829.31

Through membership in the St. Hilary Legacy Society, I/we wish to shape a legacy of hope and support for future generations of our Parish.

I/we _____ are making this commitment to the St. Hilary Parish Foundation. I/we direct this gift to be utilized in the following manner:

___ Unrestricted Endowment Fund ___ Family Named Fund
___ St. Hilary School Endowment Fund ___ Other: _____

The value of my/our commitment is estimated to be \$ _____ or
A percentage of my/our estate which estimates the gift to be \$ _____.

We plan to leave this gift through:
___ will or trust; ___ life insurance;
___ charitable trust; ___ other: _____

___ I/we permit the St. Hilary Parish Foundation to recognize my/our gift in its publications.
___ I/we wish my/our gift to remain anonymous.

**This is not a binding legal document; it is merely an indication of my/our intent to assist the Foundation in fund planning.*

FOUNDATION PUTS ROOF OVER HEADS & So Much More

In the past year, the St. Hilary Parish Foundation funded several projects for the church. Of greatest significance both financially and in importance to the infrastructure of our place of worship was the replacement of a large section of the church roof. As the photos illustrate, crews removed old roofing material on the area over the West Market Street entrance and Adoration Chapel and replaced it with new. The work was completed in August at a cost of \$83,530. This caps repairs to the church roof, along with a section the Foundation granted \$74,285 to replace in late 2022.

Also, since November 1, 2022, some other items were funded through Foundation grants. New girls basketball and volleyball uniforms were purchased with an \$18,000 grant from the Athletic Association General Fund. Gaudete and Laetare Sunday concerts were underwritten at \$6,408 through the generosity of the Jean Hauser Fund, in line with the late donor's wishes at the time the fund was established. Just over \$2,316 was also distributed from the Cope Religious Vocations Fund in grants toward educational expenses for our St. Hilary seminarians, Michael Garvin and James Parisi.

You can help ensure that important projects and programs such as this continue to be underwritten through the St. Hilary Parish Foundation. Please contact Development Director Diane Sarkis at 330-608-4787 to learn more about how your gift can make a difference.





INVESTING IN OUR FUTURE

Cont'd. from p. 1

wage benchmark. The first year increase is being implemented in the 2023-2024 school year, funded in part by a tuition increase. The second will be phased in during the 2024-2025 school year.

Because this scenario will resemble the proverbial dog chasing its tail, though, as Copley-Fairlawn Schools salaries continue to rise and St. Hilary School wages try to keep pace, and because continued increases will not be sustainable without the funding to back them, a campaign was begun in the spring of 2023 to help ensure that salaries for St. Hilary School teachers and educational staff will continue to remain competitive into the future. Investing In Our Future: A Campaign To Support Our Educators, kicked off at the school's annual Celebration event, which is the school Parents' Association's largest fundraiser. During the event, a Raise the Paddle initiative was held, raising \$80,500 in just minutes on that March evening. Since then, donations have continued to come in, with all funds being added to the Teacher Salary Fund that was established in 2004 through the St. Hilary Parish Foundation. Intended for the purpose of supporting St. Hilary School teachers and educational staff when it was created, the Teacher Salary Fund received a significant boost through the Raise the Paddle initiative in March, but much work remains to meet the campaign's \$3 million goal.

SUCCESS OF CAMPAIGN IS CRUCIAL

Teaching in a Catholic school is a vocation. St. Hilary School's educators do what they do because they love the school, its students, and - especially - sharing their faith as they teach. But over time, as the school's salaries have become far less competitive with those of its public school counterparts, and as the teachers and educational staff commit many uncompensated hours outside of the school day to work with students, lead clubs, plan special events, serve on committees, and much more, coupled with the grim reality of a national teacher shortage, the need has become critical and the time to act is now.



To retain St. Hilary School's outstanding teachers and educational staff and recruit more of them in the future, it is crucial to be able to offer a competitive salary and compensate the school's educators for the extras they provide. This underscores the importance of the Investing In Our Future campaign and the essential need for the Teacher Salary Fund to keep growing. Fundraisers will continue to support this campaign, with both 50% of the school's proceeds from the annual We Give Catholic Giving Tuesday campaign and an annual Raise the Paddle at the school's Celebration fundraiser promised to the cause. Chaired by St. Hilary School parent Brianne Alaburda, a committee to support the campaign is also hard at work planning additional smaller fundraising events, personalizing the campaign through the educators it supports, and seeking out fresh sources of philanthropic giving through the school's alumni and grandparents.

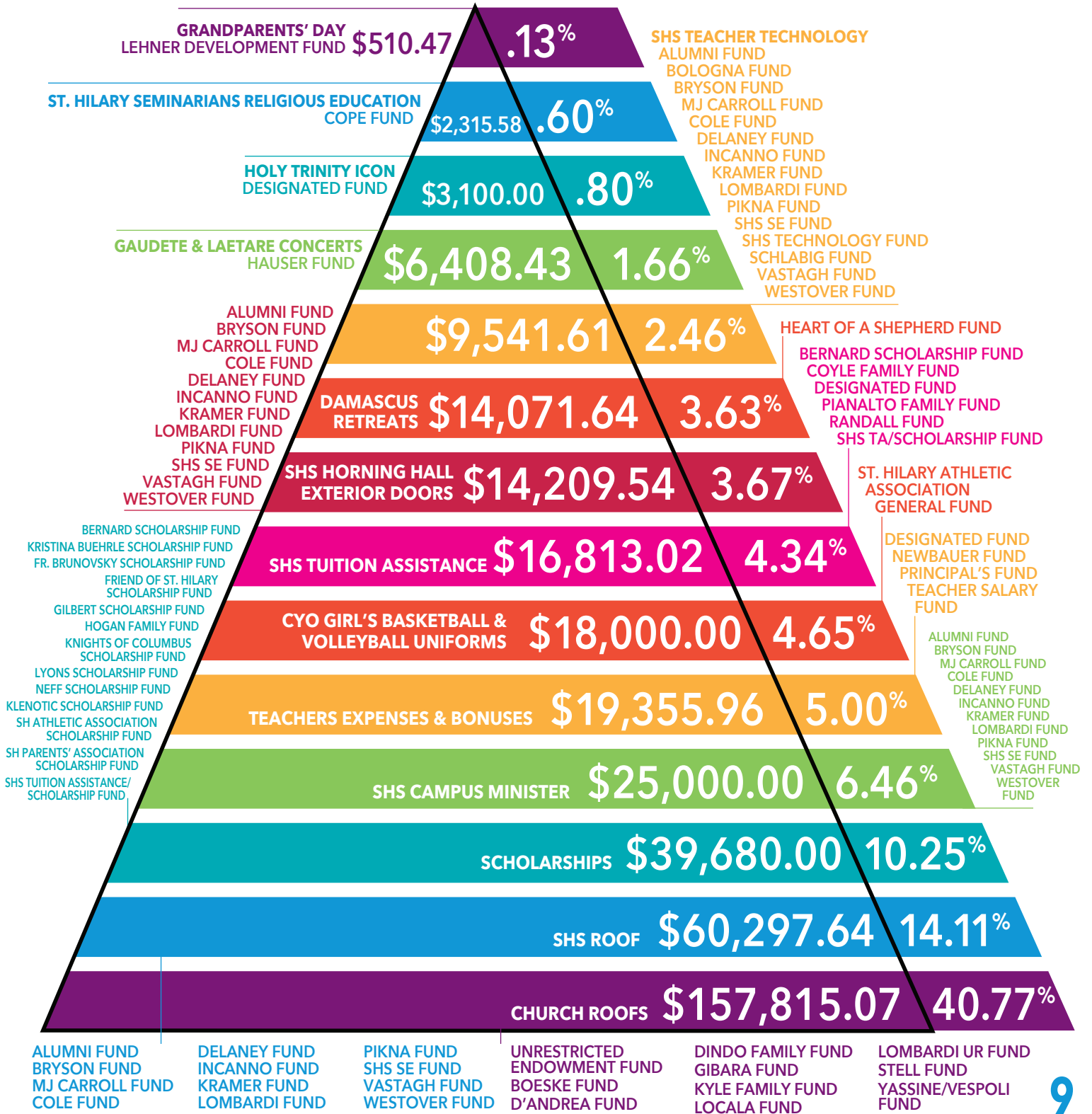
Private donors are invited to contribute at any time to ensure that St. Hilary School is able to sustain its mission through the hands and hearts of its teachers and educational staff.

Why wait for the next fundraiser when you can make a difference right now? Simply scan this code or contact St. Hilary Parish Foundation Development Director Diane Sarkis today at 330-608-4787 or d.sarkis@st-hilaryfoundation.org. Your support will ensure that St. Hilary School can continue to transform lives for Jesus Christ for years to come.



THROUGH YOUR CONTINUED GENEROSITY, THE ST. HILARY PARISH FOUNDATION WAS ABLE TO MAKE THE FOLLOWING DISTRIBUTIONS FROM NOVEMBER 1, 2022 THROUGH OCTOBER 31, 2023.

\$387,118.96



The St. Hilary Parish Foundation is extremely grateful for the generous support of the St. Hilary community. Your donations helped provide crucial annual support for our church and school through unrestricted donations, which are directed to the areas of greatest need, as well as restricted donations, which are designated for specific needs, programs and projects.

Listed below are the various funds and the names of donors who have so graciously made contributions to the Foundation between November 1, 2022 and October 31, 2023. We truly are incredibly grateful for your support!



DONOR List

UNRESTRICTED FUNDS:

UNRESTRICTED ENDOWMENT FUND

Ron Smetana & Sara Beis
 Patricia D. Conner
 Francis & Laura Figliomeni
 David & Rita George
 Jeanmaire Family Fund
 Richard & Christine Kramer
 Family Foundation
 Caroline Long
 Steven Lux
 Dr. James & Janet Mungo
 Dr. John Murphy
 Christine Myers
 Chris & Virginia Olson
 Toni Paolucci
 John Pelini
 James & Barbara Petruccio
 Tim & Jamie Powers
 Cynthia Saponetti
 Robert & Ethel Saringer
 Diane & George Sarkis
 Steve & Barb Strayer

BEQUEST:

In Memory of Lawrence Joesph Kern
 The Estate of Lawrence
 Joseph Kern

TRIBUTE GIFTS:

In Honor of Maureen Reilly's Birthday
 Kevin, Rachel, Liam & Ellie Reilly
In Honor of Fr. Thomas Koegel
 Ray & Joyce Cunningham

MEMORIAL GIFTS:

In Memory of James Aldrich
 Dr. Joseph & Dianne Mellion
In Memory of Carol Clemens
 Anonymous
 Timothy & Cheryl Goergen
 Valerie Griffin
 Holy Family School Faculty & Staff
 Daniel & Christine Krinsky
 John & Marilyn Montesanto
In Memory of Janet DasVarma
 Steve & Amy Press
In Memory of Florence Dziewisz
 Babcock & Wilcox Law Department
 John & Kelly Baumer
 Todd & Fran Evans
 Jack & Fran Holland
 Ann Jonas
 Diane & George Sarkis
 Virginia Scanlon
 Tim & Rosanne Shovlin
 St. Hilary Bridge Group
 Joan Wojcik

In Memory of Jack & Eileen Fisher

Dr. Joseph & Dianne Mellion

In Memory of Betty Hearty

Margot & Ron Schroder
 Karen Taylor

In Memory of Lucy Luisi

Mr. & Mrs. Sig Lembo

In Memory of Frank Mellion

Dr. Joseph & Dianne Mellion

In Memory of Louis & Helen Mellion

Dr. Joseph & Dianne Mellion

In Memory of Linda O'Neill

Heather Parker-Crabtree

In Memory of Agnes Ribes

Anonymous

In Memory of Dan Unk

Dr. Joseph & Dianne Mellion

JOSEPHA BOESKE FUND

Josepha Boeske

DOROTHY L. D'ANDREA FUND

DINDO FAMILY FUND

Kitty Dindo

MEMORIAL GIFTS:

In Memory of Tom Dindo

Cheryl Dochat
 Lisa Graf
 Rod & Dar Reese
 Doug & Diane Root

SALMA & SAM GIBARA FUND

Sam & Salma Gibara

NICHOLAS EDWARD KUCHAR FUND

KYLE FAMILY FUND

Mary Ann Kyle

MEMORIAL GIFTS:

In Memory of Florence Dziewisz

Mary Ann Kyle

FREDERICK M. & MARGARET J. LOMBARDI FAMILY FUND

Frederick & Margaret Lombardi

MARK AND TINA OELSCHLAGER FUND

Mark & Tina Oelschlager

TRIBUTE GIFT:

In Honor of Jamie & Cliff Oelschlager

Mark & Tina Oelschlager

JULIA & ROBERT STELL FUND

DR. ZOUHAIR & CAROL YASSINE/TONY & LEILA VESPOLI FUND

Carol Yassine

In Memory of Florence Dziewisz

Carol Yassine

ST. HILARY SCHOOL UNRESTRICTED FUNDS:

SHS UNRESTRICTED FUND

Brett & Julie Angle
 Ed Buehrle
 Joe & Karen Congeni
 Joyce Davis
 Matthew & Denise Fresh
 Tom & Nancy Peltier
 Tim & Jamie Powers
 Joe & Nicole Redle
 Thomas Schmitt, Jr.
 Dr. Ranendra & Janet † DasVarma
 Steve & Cathy Hammersmith
 Todd & Kelly Kennedy
 Richard & Christine Kramer
 Family Foundation
 Michael & Catherine Leonakis
 Ray & Julie Slattery
 TJ & Michelle Wolski Family
 John & Ellen Vollman

MEMORIAL GIFTS:

In Memory of Agnes Ribes
 Anonymous
 Karen Kardoheley
 Richard & Marcie Hammel
 Kathleen Moloney
 Mark & Dorothy Moloney

ALUMNI FUND

CLASS OF 1979
 Pete & Maggie Reagan

BRYSON FAMILY FUND

MARY JEAN CARROLL FUND

Walter & Teresa McGee
 George & Diane Sarkis

TERESA ANN COLE FUND

DELANEY FAMILY FUND

J.P. & Judie Delaney

DONNA MARIE INCANNO FUND

JOHN D. & JOAN M. KRAMER FUND

FREDERICK M. & MARGARET J. LOMBARDI FAMILY SE FUND

Frederick & Margaret Lombardi

RAYMOND J. & PEGGY J. PIKNA FAMILY FUND

VASTAGH FAMILY FUND

WESTOVER FAMILY FUND

SPECIFIED PARISH FUNDS:

MARY & CHARLIE BOOTH COMMUNITY OUTREACH FUND

CHOIR FUND

DESIGNATED FUND

Anonymous
 Salma & Sam Gibara

MEMORIAL GIFTS:

In Memory of Ivan & Janet Frey
 Karen Frey

TRIBUTE GIFTS:

In Honor of Fr. Thomas Koegel
 Ray & Joyce Cunningham
In Honor of SHS Teachers
 Anonymous

EVANGELIZATION FUND

MATTHEW & DENISE FRESH FUND

Matthew & Denise Fresh

JAMES & GAIL GILTNER FAMILY FUND

JEAN & JOSEPH HAUSER FUND

HEART OF A SHEPHERD FUND

St. Hilary Parish

HUMMEL FAMILY FUND

Eddie & Bridget Hummel Chevalier

TRIBUTE GIFTS:

In Honor of Paul & Patricia Hummel
 Mr. & Mrs. Joseph Murray

LEHNER FAMILY FOUNDATION

ST. HILARY DEVELOPMENT FUND

Lehner Family Foundation

JOSEPH & CYNTHIA LOCALA FUND

MARYANN MAY ADULT EDUCATION FUND

BEQUEST:

In Memory of Maryann May
 Maryann C. May Estate

PSR FUND

Frank P. & Marie L. Bevilacqua
 Foundation

MEMORIAL GIFTS:

In Memory of Arthur Minkel
 Joan Minkel Everrett
In Memory of Agnes Ribes
 Doris Moloney

ST. HILARY ATHLETIC ASSOCIATION GENERAL FUND

ST. HILARY KNIGHTS OF COLUMBUS GENERAL FUND

St. Hilary Knights of Columbus
 Council 14551

ST. HILARY PARISH DESIGNATED FUND

St. Hilary Parish
Mark & Tina Oelschlager

SPECIFIED ST. HILARY SCHOOL FUNDS:**ALUMNI FUND****TRIBUTE GIFT:**

In Honor of SHS Class of '79
Pete & Maggie Reagan

BUEHRLE FAMILY FUND**ENRICHMENT FUND****KAY & BOB HUDAK FUND****RHONDA NEUBAUER FAMILY FUND****MUSICAL THEATRE/ARTS FUND**

SHS Musical

PARENTS' ASSOCIATION FUND**PRINCIPAL'S FUND**

Dr. Frederick Conti

ST. HILARY PARENTS' TEACHER**SALARY FUND**

Joe & Lisa Allio
Badie & Andrea Alnemr
Anonymous
John & Andrea Babjack
Patrick & Estelle Basney
Tony & Crystal Beiting
Tim & Meghan Beringer
Joseph & Courtney Borruso
Judge Lynne Callahan
Jason & Kristin Callard
Matthew & Rose Carducci
Tom & Judy Ciccolini
Michael Conley
Robert & Lisa Crane
Chris & Mandy Davis
Dr. Ranendra & Janet † DasVarma
Eric & Angela Dubliker
Matthew & Christine Eldred
David & Rebecca Forrer
David & Marci Fredrick
Connie Hall
Andy & Megan Hannan
Phillip & Jennifer Helon
Phil & Amy Heyn
Karl & Wendy Higley
Mark & Marisa Hoffmann
Ty & Tyler Hysell
Julie Jamison
Jeanmaire Family Fund
Mark & Casey Juve
Mike & Amanda Kelley
David & Rebecca Kistler
Derek & Erin Klaus
Craig & Shelly Kohrs
Richard & Christine Kramer
Family Foundation
Lucas & Sarah Krammes
Ryan & Angela Krieger
Justin & Melanie Kurzwil
Dameka & Sherman Lee
Dean & Lynda Leonakis
Michael & Catherine Leonakis
Jim & Anne Luby
Kurt & Lisa Lutz

Chad & Anna Malek
Scott & Erica Marhofer
Chris & Karyn Martin
Kevin & Michele McGrath
Anthony & Shannon McKeen
Donna Merrill
Joe & Melissa Montisano
Joe & Darcy Morris
Matt & Shannon Myer
Douglas & Susan Myer
Christine Myers
Mark & Stephanie Norton
Mark & Tina Oelschlager
Jon & Megan Oldham
Pat & Sarah O'Neill
Harrison & Katie Orendorf
JP & Shannon Panagopoulos
Tim & Jamie Powers
Jeff & Kelli Peiffer
Michael & Janet Pera
Progressive Insurance Foundation
Chris & Tara Reuscher
Jeff & Rachel Rice
David & Brittany Root
Dominic & Monica Ruby
Mark & Katie Ruby
Christopher & Laura Rucker
Andrea Rykalla
Muhannad & Cassie Samaan
AJ & Elizabeth Sands
George & Diane Sarkis
John Scanlon & Catherine Breck
Ben & Jennifer Schlater
Thomas Schmitt, Jr.
Jonathan & Maryann Siefker
Guy & Susan Shoemaker
Ryan & Eileen Simcox
Vito & Debbie Sinopoli
Adrienne Six
Luke & Melissa Taylor
Ed & LuAnne Toth
Al & Maryann Ulle
David & Jill Warner
Matt & Lindsey Wilkinson
Rob & Catherine Williamson
TJ & Michelle Wolski Family
Jonathan & Jennifer Woodman

MEMORIAL GIFTS:

In Memory of Carol Clemens
Joe & Gloria Rodio
In Memory of Jamie Kovarik
George & Diane Sarkis
In Memory of Lucy Luisi
Cindy Anasson & Karen Anasson
Families
Sharon Fortunato
Karen Frey
Jeanmaire Family Fund
John & Judy Krajewski
Tom & Lori Luisi
Betty McCormick
Doug & Susan Myer
Northern Ohio Golf Charities
Exec. Vice Chairmen
Thomas Petropoulos
Diane & George Sarkis
Al & Mary Ann Ulle
Fabiola Vaccaro

In Memory of Kevin O'Neil

Lynda O'Neil

In Memory of Agnes Ribes

Diane & George Sarkis

In Memory of Britt Rinehart

Joe Walter

In Memory of Jane Vieltoft

Joe Walter

TRIBUTE GIFTS:

In Honor of Mr. & Mrs. Joe Tartabini, Jr.
Corrinne L. Doderro Foundation
For Arts & Sciences

**GUY SCARPITTI MUSIC
EDUCATION FUND****SHS SCHOLARSHIP/TUITION
ASSISTANCE FUNDS:****RALPH & FLORENCE BERNARD
SCHOLARSHIP FUND****COYLE FAMILY TUITION
ASSISTANCE FUND**

G.F. & Cheryl J. Coyle

PIANALTO FAMILY FUND

Sandy Pianalto

JOHN & JULIE RANDALL FUND**TUITION ASSISTANCE/SCHOLARSHIP
FUND**

Frank P. & Marie L. Bevilacqua
Foundation

Richard & Janet McGuckin
Christine Myers

Ed & Mary Pulekins

MEMORIAL GIFTS:**In Memory of John Fiocca**

Donna & Schott Campbell

Tom & Diana Fiocca

David Frank

Gamma Phi Beta Sorority Sisters

of Patricia

Annita Paolucci

John & Sheila Paolucci

Vincent & Paulett Paolucci

Ed & Mary Pulekins

Gary & Mary Ellen Smith

Matthew & Cyndi Smith

Pam, Mario, Elena Fiocca

Walt & Marcia Wood

In Memory of Mary E. Leyden Green

Norman Green

SPECIFIED SHS SCHOLARSHIP FUNDS:**KRISTINA N. BUEHRLE TUITION
SCHOLARSHIP FUND**

Ed Buehrle

Kathleen Buehrle

Max Buehrle

Riley Buehrle

Russell Buehrle

Victor Buehrle

**REV. STEVEN K. BRUNOVSKY CATHOLIC
LEADERSHIP FUND**

Richard & Christine Kramer
Family Foundation

Fr. Steven Brunovsky

TRIBUTE GIFTS:**In Honor of Fr. Steve Brunovsky**

Diane & George Sarkis

Gregg & Janet Zolton

MEMORIAL GIFT:**In Memory of Jamie Kovarik**

Fr. Steve Brunovsky

FRIEND OF ST. HILARY FUND

Tracey & Ray Arnone

EDWARD L. GILBERT FAMILY FUND**HOGAN FAMILY FUND**

Dennis Hogan

MEMORIAL GIFTS:**In Memory of Florence Dziewisz**

Dr. & Mrs. James Hogan

In Memory of Leonard James

Schnetzer, Jr.

Dr. & Mrs. James Hogan

TRIBUTE GIFTS:**In Appreciation of St. Hilary Parish**

& School

Dr. & Mrs. James Hogan

KEVIN THOMAS NEFF FUND**MEMORIAL GIFTS:****In Memory of Kevin Neff**

KTN Volleyball Tournament

Diane & George Sarkis

Gregg & Janet Zolton

JANE KLENOTIC FUND**JIMMY LYONS GEOGRAPHY BEE FUND****MEMORIAL GIFTS:****In Memory of Jimmy Lyons**

Judge Lynne Callahan

Diane Chopko

Richard & Christine Kramer

Family Foundation

Kurt & Lisa Lutz

Jim & Mary Lyons

George & Diane Sarkis

**PARENTS' ASSOCIATION SCHOLARSHIP
FUND**

St. Hilary Parents' Association

**ST. HILARY ATHLETIC ASSOCIATION
SCHOLARSHIP FUND**

St. Hilary Athletic Association

**ST. HILARY KNIGHTS OF COLUMBUS
SCHOLARSHIP FUND**

St. Hilary Knights of Columbus Council
14551

SHS TECHNOLOGY FUNDS:**LOUIS & LINDA BOLOGNA FUND****ROBERT & CAROL SCHLABIG FUND****TECHNOLOGY FUND**

Christine Myers

Tim & Jamie Powers

† Deceased



FOUNDATION INVESTS IN FUTURE By Supporting School

Now in its 63rd year, St. Hilary School is thriving with enrollment on the upswing and many exciting things happening in the school on a daily basis! Generous donors have enabled the St. Hilary Parish Foundation to continue to support the school in a variety of ways. In the past year alone, the Foundation subsidized a number of projects that improved the school facility and supported those within the building. Foundation funds helped make possible the replacement of the section of the school roof over the junior high wing, science lab and art room, with a contribution of \$60,298 toward the total project cost. Additionally, Horning Hall exterior doors were replaced, with a price tag of \$14,210. In keeping with the goal of supporting the school's educators, the Foundation provided \$9,542 in funds to purchase laptops for teachers, and \$19,206 for teacher Christmas bonuses and stipends. In October, the Foundation granted \$500 to sponsor the school's Grandparents' Day event, which hosted 700 grandparents and other guests who visited classrooms and attended Mass with students. Although the investment was fairly small, the return on it was immeasurable as grandparents and students made priceless memories on this special day.

SCHOLARSHIPS AND ASSISTANCE HELP MAKE TUITION AFFORDABLE

Continuing to generously support St. Hilary School students through direct financial assistance is as important to the Foundation as funding capital improvements and other amenities. In 2023, to ensure that a St. Hilary School education is affordable for all students, \$6,613 was given to cover outstanding unpaid tuition balances for those with hardship situations. When 2024-2025 enrollment begins in January, the Foundation anticipates offering about 20 scholarships totaling more than \$35,000 for which students returning to the school in 2024-2025 may apply. Since it was implemented in December 2015 for the 2016-2017 school year, the Foundation's broad scholarship initiative has awarded 137 scholarships totaling \$229,380. Of these, 20 scholarships, totaling \$36,080, were awarded in 2023. These scholarships provide funds to students who are selected based on meeting the criteria established by the scholarship donors. They include the Friend of St. Hilary Scholarship, the Mother Teresa Scholarship, the Sr. Carol Joy Scholarship, the St. Aloysius Scholarship, the St. Hilary R.E.D. Scholarship, the Striving Saber Scholarship, the Ralph and Florence Bernard Scholarship, the Rev. Steven Brunovsky Catholic Leadership Scholarship, the Edward L. Gilbert Family Scholarship, and the



Liam Haskins was the recipient of the 2023 Kevin Thomas Neff Scholarship.

St. Hilary Parish Foundation Tuition Assistance Scholarship. The additional funds often mean the difference for the students and families who receive these scholarships between being able to continue a St. Hilary School education and needing to look for another option. Due to the need-based nature of many of the scholarships, the names of the recipients have not been published in order to protect their privacy. New, more inclusive eligibility criteria will be in place beginning in 2024.

SPECIAL RECOGNITION THROUGH MEMORIAL AND TRIBUTE SCHOLARSHIPS

The St. Hilary Parish Foundation also grants some scholarships that do not require students to apply, but are awarded simply because the recipients are recognized as bearing qualities reminiscent of the individuals the scholarships honor, or because they embody ideals the scholarships promote.

The Kevin Thomas Neff Scholarship is a prime example of such a scholarship. The scholarship, which honors 2000 St. Hilary School graduate Kevin Neff, who died of a brain tumor while in high school, annually provides a scholarship to a seventh grader who exemplifies the characteristics Kevin aspired to during his life. In 2023, the amount of the award was increased from \$1,250 to \$1,600. In the 2022-2023 school year, the Kevin Thomas Neff Scholarship was awarded to Liam Haskins.

Another memorial scholarship honors long-time St. Hilary School second grade teacher Jane Klenotic, who lost her battle with cancer in 2014. The Jane Klenotic Scholarship honors and annually awards a \$1,000 scholarship to a second



grader who has the attributes of spiritual, academic and personal character that were important to Jane. In the 2022-2023 school year, the Jane Klenotic Scholarship was awarded to Eleanor Capellas.

Begun in memory of St. Hilary School 2006 graduate Jimmy Lyons, the Jimmy Lyons Geography Bee Scholarship Fund honors the four-time winner of the school's geography bee and state bee competitor, who passed away in 2011. This \$500 scholarship has traditionally been awarded to the winner of the school's geography bee each year. The school did not hold a geography bee in 2023, so no scholarship was awarded. The bee and scholarship award are scheduled to resume in 2024.



The 2023 Jane Klenotic Scholarship was awarded to Eleanor Capellas.

Finally, the Foundation provides \$500 St. Hilary Athletic Association scholarships each year to two St. Hilary School eighth grade student athletes who qualify based on athletics, academics, and character. The scholarships are applied to the recipients' high school tuition. In May 2023, these scholarships were awarded to Caitlin Kennedy and Jack Zimmerman.

DONORS HELP FOUNDATION KEEP PACE

It is the generosity of the donors who contribute to the St. Hilary Parish Foundation that makes tuition assistance, scholarships and other projects possible. The Foundation relies upon each donor to build its funds and enable continued support of St. Hilary School and its students. Mindful of ongoing needs of both the school and the parish, the Foundation must work to maintain its resources at levels that will allow it to keep pace with these financial demands and safeguard the future. Without your valued support of the Foundation, our school and our parish would not be able to provide the many features from which our St. Hilary community benefits. To explore opportunities



Grandparents and grandchildren enjoy special moments during the school's 2023 Grandparents' Day.

to support the St. Hilary Parish Foundation and the parish and school community it serves, please contact St. Hilary Parish Foundation Development Director Diane Sarkis at 330-608-4787.



ST. HILARY PARISH FOUNDATION GRANT DISTRIBUTIONS FROM 2019 TO 2023

Listed here are the grants the St. Hilary Parish Foundation has provided to support the church and school over the past five years. Your generosity is what enables the Foundation to fund such things as capital improvements to our buildings and grounds, scholarships and tuition assistance for students, and much more. We are

grateful for your support, without which none of these grants would have been possible.

2019	
SHS Roof Replacement	\$ 100,000.00
Church Piano and Lessons & Carols and Laetare Concerts	37,045.05
Concrete Work - Church Entrance, Spiritual Center	25,700.00
Horning Hall Wireless Microphone System	19,593.00
Promethean Operating Systems, Access Points, Promethean Board, Teacher Laptops, iPad Air	18,152.48
Spiritual Center Chairs	17,540.24
Tuition Assistance	16,767.50
Evangelization	12,514.85
SHS Phone System	11,033.87
Concrete Work - School	10,300.00
SH Parents' Association Scholarships	10,000.00
St. Hilary Church Projector and Installation	9,779.90
Spiritual Center LL Folding Accordion Partition	9,780.00
SHS Entryway Renovations	8,077.32
St. Hilary Church Auto Scrubber	6,715.00
Friend of St. Hilary Scholarships	6,000.00
Teacher Christmas Bonuses	4,956.48
Spiritual Center Automatic Handicap Access Door	4,640.00
Ralph L. and Florence A. Bernard Scholarships	4,000.00
SHPF Tuition Assistance Scholarships	4,000.00
SHS Buzzer Systems	3,032.00
Lenten Speaker	1,878.40
Welcome Center Desk	1,874.70
Kevin Neff Scholarship	1,300.00
Rev. Steven K. Brunovsky Catholic Leadership Scholarship	1,000.00
Jane Klenotic Scholarship	1,000.00
Knights of Columbus Scholarships	1,000.00
St. Hilary Athletic Association Scholarships	1,000.00
SHS Latchkey Assistance	710.00
PSR Books	698.56
Rosaries	585.20
Edward L. Gilbert Family Scholarship	500.00
Jimmy Lyons Scholarship	500.00
St. Hilary Parish 60th Anniversary	400.00
TOTAL	\$ 368,522.98

2020	
Spiritual Center Remodel	66,300.00
SHS Chromebooks and Covers	60,368.83
SHS Tuition Freeze	58,690.00
SHS Tuition Assistance	44,068.76

Church Choir Chairs	22,178.20
Spiritual Center Folding Partitions	21,875.00
SHS Kindergarten & 1st Grade Fees	17,700.00
Evangelization	12,400.07
SH Parents' Association Scholarships	10,000.00
Friend of St. Hilary Scholarships	6,000.00
Teacher/Staff Christmas Bonuses	5,192.00
Ralph L. and Florence A. Bernard Scholarships	4,000.00
SHPF Tuition Assistance Scholarships	4,000.00
Spiritual Center Ice Maker	2,499.00
Spiritual Center Tables	2,275.70
SHS Kitchen Warming Oven	1,575.20
SHS Latchkey Assistance	1,522.50
Kevin Neff Scholarship	1,400.00
Rev. Steven K. Brunovsky Catholic Leadership Scholarship	1,000.00
Jane Klenotic Scholarship	1,000.00
Knights of Columbus Scholarships	1,000.00
St. Hilary Athletic Association Scholarships	1,000.00
Edward L. Gilbert Family Scholarship	600.00
Jimmy Lyons Scholarship	500.00
Rosaries	403.56
TOTAL	\$ 347,549.17

2021	
SHS Entryway and Office Renovations	140,000.00
Church Pews (Deposit)	73,759.50
Rectory Window Replacement	15,371.00
Evangelization	12,546.16
SH Parents' Association Scholarships	10,000.00
SHS Tuition Assistance	7,287.91
Religious Vocations Tuition Assistance	7,000.00
Reposition Chape. A/C Replacement	6,983.95
Spiritual Center Stained Glass Window Installation	6,250.00
Friend of St. Hilary Scholarships	6,000.00
Faculty Bonuses	5,260.08
Ralph L. and Florence A. Bernard Scholarships	4,000.00
SHPF Tuition Assistance Scholarships	4,000.00
SHS Intervention Office Equipment	3,453.77
Kevin Neff Scholarship	1,400.00
Rev. Steven K. Brunovsky Catholic Leadership Scholarship	1,000.00
Knights of Columbus Scholarships	1,000.00
St. Hilary Athletic Association Scholarships	1,000.00
Edward L. Gilbert Family Scholarship	600.00
TOTAL	\$ 306,912.37

2022	
Church Pews & Tile Replacement	\$ 196,605.50
Church Roof	74,285.07
SHS Jr. High Classroom Renovations	61,898.00
Parish Office & Spritual Center Security	20,091.28
Evangelization	13,696.68
Faculty Bonuses	12,105.96
St. Hilary Parents' Association Scholarships	10,000.00

Damascus Retreats	11,663.00
Ralph L. & Florence A. Bernard Scholarships	6,000.00
Friend of St. Hilary Scholarships	6,000.00
Gaudete & Laetare Sunday Concerts	4,987.81
Church Stained Glass Windows	4,675.00
SHPF Tuition Assistance Scholarships	4,000.00
Faculty Expenses	3,904.88
PSR Office Reorganization	2,486.38
Kevin Neff Scholarship	1,600.00
Rev. Steven K. Brunovsky Catholic Leadership Scholarship	1,000.00
Jane Klenotic Scholarship	1,000.00
Knights of Columbus Scholarships	1,000.00
St. Hilary Athletic Association Scholarships	1,000.00
Docking Stations & Battery Packs - SHS Musical	688.94
Edward L. Gilbert Family Scholarship	600.00
Jimmy Lyons Geography Bee Scholarship	500.00
TOTAL	\$ 439,788.50

2023*	
Church Roof	\$ 83,530.00
SHS Roof	60,297.64
SHS Campus Minister	25,000.00
St. Hilary Girl's Basketball & Volleyball Uniforms	18,000.00
SHS Tuition Assistance	16,813.02
Horning Hall Exterior Doors	14,209.54
Damascus Retreats	13,215.00
St. Hilary Parents' Association Scholarships	10,000.00
Faculty Bonuses	7,250.00
SHS Teacher Technology	9,541.61
Gaudete & Laetare Sunday Concerts	6,408.43
Ralph L. & Florence A. Bernard Scholarships	6,000.00
Friend of St. Hilary Scholarships	6,000.00
SHPF Tuition Assistance Scholarships	6,000.00
Kristina N. Buehrle Tuition Scholarship	4,980.00
Holy Trinity Icon	3,100.00
Seminarians Religious Education	2,315.58
Kevin Neff Scholarship	1,600.00
Rev. Steven K. Brunovsky Catholic Leadership Scholarship	1,000.00
Jane Klenotic Scholarship	1,000.00
Knights of Columbus Scholarships	1,000.00
St. Hilary Athletic Association Scholarships	1,000.00
Edward L. Gilbert Family Scholarship	600.00
Grandparents' Day	510.47
Hogan Family Fund Scholarship	500.00
TOTAL	\$ 299,871.29*

*(2023 - January 1, 2023 - October 31, 2023)

Since 1979, the total amount of distribution of grants to St. Hilary Church and St. Hilary School is as follows:

Parish Grants:	\$ 2,540,940.17
School Grants:	\$ 2,825,698.88

Total Grants Distributed: \$5,366,639.05

Financial Statement Comparative Summary Statement of Financial Position Ending October 31, 2023

	11/1/22-10/31/23	11/1/21-10/31/22
ASSETS		
Operating Account	\$ 5,871.02	\$ 5,871.02
Unrestricted Parish Funds	\$ 2,449,309.71	\$ 2,407,079.21
Specified Parish Funds	\$ 4,620,390.55	\$ 4,436,660.64
Unrestricted School Funds	\$ 2,002,150.80	\$ 2,022,441.85
All Specified School Funds	\$ 1,279,729.08	\$ 1,100,345.90
Receivables - Pledges	\$ 16,100.02	\$ 28,936.67
Total Assets	\$ 10,373,551.18	\$ 10,001,335.29
LIABILITIES AND NET ASSETS		
Liabilities:		
Accounts Payable	\$.00	\$.00
Total Liabilities	\$.00	\$.00
Net Assets	\$ 10,373,551.18	\$ 10,001,335.29
Total Liabilities and Net Assets	\$ 10,373,551.18	\$ 10,001,335.29

Summary Statement of Activities

	11/1/22-10/31/23	11/1/21-10/31/22
REVENUES AND GAINS		
Contributions Received	\$ 514,829.58	\$ 419,231.97
Investment Income	\$ 355,411.44	\$ (1,776,853.16)
Total Contributions and Gains	\$ 870,241.02	\$ (1,357,621.19)

DISTRIBUTIONS AND EXPENSES

Grants and		
Other Distributions	\$ 409,408.73	\$ 464,019.37
Expenses	\$ 70,625.63	\$ 61,557.89
Total Distributions and Expenses	\$ 480,034.36	\$ 525,577.26

ANNUAL REPORT

FALL 2023
Volume 20

THE IMPORTANCE OF Giving

Since its inception in 1976, the St. Hilary Parish Foundation has grown to over \$10.3 million, with \$5.3 million granted to date. The Foundation has been incredibly blessed by donor generosity, and in turn, has been able to provide significant support for needs of the church and school. With a sizeable amount in its coffers, some may wonder why the Foundation continues to seek donations.

The Foundation is managed by a board of directors who oversee the funds, review and grant requests for distributions, and confirm that fund expenditures comply with applicable donor and fund restrictions. A fiscally responsible spending policy permits only 4% of the 12-quarter average in an unrestricted fund to be distributed, in order to maintain growth and prevent depletion of that fund. Other funds have equally sound spending policies for the same reasons. Market fluctuations play a part in this, as do the amount of donations into a fund in relation to gifts distributed from that fund. The distributable amount in any given fund is always lower than the balance of the fund itself, so donations are imperative in order to continue the ability to make distributions from the fund. And it goes without saying that increased donations lead to increased funds, leading to the ability to provide increased distributions.

When fund balances permit distributions to support the church and school, the need for a pastoral appeal to parishioners for special offertory collections or donations is eliminated. While the weekly offertory collection funds the basic operating expenses of the parish, the Foundation subsidizes capital improvements and unforeseen expenses for the church and school, and supports programs and amenities that enrich the parish community. Contributions in any amount enable these grants to be a reality. This

report details many ways to support the Foundation in its mission to underwrite needs of the church and school. Please contact Diane Sarkis, Development Director, at 330-608-4787, or scan this code to learn more or make a donation.



BOARD MEMBERS

Stephen L. Strayer

President

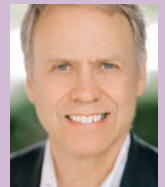
elected to board membership 2004



Stephen M. Hammersmith

Vice President and Secretary

elected to board membership 2004



Matthew Shannon

Treasurer

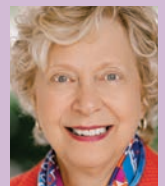
elected to board membership 2005



Kathryn W. Dindo

Board Member

elected to board membership 1992



Sandra Pianalto

Board Member

elected to board membership 2015



Fr. Steven Brunovsky

Board Member

joined board membership 2007



Diane Sarkis

Development Director



Dale Koblenzer, Harrison Orendorf | Advisors to the Board of Trustees

The St. Hilary Parish Foundation fosters philanthropy and serves as a steward of funds, to ensure a vibrant parish life, the highest standards of excellence in Catholic education and the sustainability of the Parish.

© 2023 St. Hilary Parish Foundation All rights reserved. 11/23 SHF-0023 3.5M