



DIRECTOR'S STAY AT HOME ORDER

Re: Director's Order that All Persons Stay at Home Unless Engaged in Essential Work or Activity

I, Amy Acton, MD, MPH, Director of the Ohio Department of Health (ODH), pursuant to the authority granted to me in R.C. 3701.13 to "make special orders...for preventing the spread of contagious or infectious diseases" **Order** the following to prevent the spread of COVID-19 into the State of Ohio:

- 1. Stay at home or place of residence.** With exceptions as outlined below, all individuals currently living within the State of Ohio are ordered to stay at home or at their place of residence except as allowed in this Order. To the extent individuals are using shared or outdoor spaces when outside their residence, they must at all times and as much as reasonably possible, maintain social distancing of at least six feet from any other person, with the exception of family or household members, consistent with the Social Distancing Requirements set forth in this Order. All persons may leave their homes or place of residence only for Essential Activities, Essential Governmental Functions, or to participate in Essential Businesses and Operations, all as defined below.

Individuals experiencing homelessness are exempt from this Order, but are strongly urged to obtain shelter, and governmental and other entities are strongly urged to make such shelter available as soon as possible and to the maximum extent practicable (and to use in their operation COVID-19 risk mitigation practices recommended by the U.S. Centers for Disease Control and Prevention (CDC) and the Ohio Department of Health (ODH)). This order does not apply to incarcerated individuals, they are to follow the guidance of the facility in which they are confined. Individuals whose residences are unsafe or become unsafe, such as victims of domestic violence, are permitted and urged to leave their home and stay at a safe alternative location. For purposes of this Order, homes or residences include hotels, motels, shared rental units, shelters, and similar facilities.

- 2. Non-essential business and operations must cease.** All businesses and operations in the State, except Essential Businesses and Operations as defined below, are required to cease all activities within the State except Minimum Basic Operations, as defined below. For clarity, businesses, including home-based businesses, may also continue operations consisting exclusively of employees or contractors performing activities at their own residences (i.e., working from home).

All Essential Businesses and Operations are encouraged to remain open. Essential Businesses and Operations shall comply with Social Distancing Requirements as defined in this Order, including by maintaining six-foot social distancing for both employees and members of the public at all times, including, but not limited to, when any customers are standing in line.

- 3. Prohibited activities.** All public and private gatherings of any number of people occurring outside a single household or living unit are prohibited, except for the limited purposes permitted by this Order. Any gathering of more than ten people is prohibited unless exempted by this Order. This is

in accordance with President Trump's coronavirus guidelines issued March 16, 2020. Nothing in this Order prohibits the gathering of members of a household or residence.

All places of public amusement, whether indoors or outdoors, including, but not limited to, locations with amusement rides, carnivals, amusement parks, water parks, aquariums, zoos, museums, arcades, fairs, children's play centers, playgrounds, funplexes, theme parks, bowling alleys, movie and other theaters, concert and music halls, and country clubs or social clubs shall be closed.

4. **Prohibited and permitted travel.** Only Essential Travel and Essential Activities as defined herein, are permitted. People riding on public transit must comply with Social Distancing Requirements to the greatest extent feasible. This Order allows travel into or out of the State to maintain Essential Businesses and Operations and Minimum Basic Operations.
5. **Leaving the home for Essential Activities is permitted.** For purposes of this Order, individuals may leave their residence only to perform any of the following Essential Activities:
 - a. **For health and safety.** To engage in activities or perform tasks essential to their health and safety, or to the health and safety of their family or household members or persons who are unable or should not leave their home (including, but not limited to, pets), such as, by way of example only and without limitation, seeking emergency services, obtaining medical supplies or medication, or visiting a health care professional.
 - b. **For necessary supplies and services.** To obtain necessary services or supplies for themselves and their family or household members or persons who are unable or should not leave their home, or to deliver those services or supplies to others, such as, by way of example only and without limitation, groceries and food, household consumer products, supplies they need to work from home, automobile supplies (including dealers, parts, supplies, repair and maintenance), and products necessary to maintain the safety, sanitation, and essential operation of residences.
 - c. **For outdoor activity.** To engage in outdoor activity, provided the individuals comply with Social Distancing Requirements, as defined below, such as, by way of example and without limitation, walking, hiking, running, or biking. Individuals may go to public parks and open outdoor recreation areas. However, public access playgrounds may increase spread of COVID-19, and therefore shall be closed.
 - d. **For certain types of work** To perform work providing essential products and services at Essential Businesses or Operations (which, as defined below, includes Healthcare and Public Health Operations, Human Services Operations, Essential Governmental Functions, and Essential Infrastructure) or to otherwise carry out activities specifically permitted in this Order, including Minimum Basic Operations.
 - e. **To take care of others.** To care for a family member, friend, or pet in another household, and to transport family members, friends, or pets as allowed by this Order. This includes attending weddings and funerals.
6. **Elderly people and those who are vulnerable as a result of illness should take additional precautions.** People at high risk of severe illness from COVID-19, including elderly people and those who are sick, are urged to stay in their residence to the extent possible except as necessary

to seek medical care. Nothing in this Order prevents the Department Health or local health departments from issuing and enforcing isolation and quarantine orders.

- 7. Healthcare and Public Health Operations.** For purposes of this Order, individuals may leave their residence to work for or obtain services through Healthcare and Public Health Operations.

Healthcare and Public Health Operations includes, but is not limited to: hospitals; clinics; dental offices; pharmacies; public health entities, including those that compile, model, analyze and communicate public health information; pharmaceutical, pharmacy, medical device and equipment, and biotechnology companies (including operations, research and development, manufacture, and supply chain); organizations collecting blood, platelets, plasma, and other necessary materials; licensed medical marijuana dispensaries and licensed medical marijuana cultivation centers; obstetricians and gynecologists; eye care centers, including those that sell glasses and contact lenses; home healthcare services providers; mental health and substance use providers; other healthcare facilities and suppliers and providers of any related and/or ancillary healthcare services; and entities that transport and dispose of medical materials and remains.

Specifically included in Healthcare and Public Health Operations are manufacturers, technicians, logistics, and warehouse operators and distributors of medical equipment, personal protective equipment (PPE), medical gases, pharmaceuticals, blood and blood products, vaccines, testing materials, laboratory supplies, cleaning, sanitizing, disinfecting or sterilization supplies, and tissue and paper towel products.

Healthcare and Public Health Operations also includes veterinary care and all healthcare services provided to animals.

Healthcare and Public Health Operations shall be construed broadly to avoid any impacts to the delivery of healthcare, broadly defined. Healthcare and Public Health Operations does not include fitness and exercise gyms, spas, salons, barber shops, tattoo parlors, and similar facilities.

- 8. Human Services Operations.** For purposes of this Order, individuals may leave their residence to work for or obtain services at any Human Services Operations, including any provider funded by the Ohio Department of Aging, Department of Developmental Disabilities, Department of Health, Department of Job and Family Services, Department of Medicaid, Department of Mental Health and Addiction Services, Opportunities for Ohioans with Disabilities, Department of Veterans Services, and Department of Youth Services that is providing services to the public and including state-operated, institutional, or community-based settings providing human services to the public.

Human Services Operations includes, but is not limited to: long-term care facilities; day care centers, day care homes, group day care homes; residential settings and shelters for adults, seniors, children, and/or people with developmental disabilities, intellectual disabilities, substance use disorders, and/or mental illness; transitional facilities; home-based settings to provide services to individuals with physical, intellectual, and/or developmental disabilities, seniors, adults, and children; field offices that provide and help to determine eligibility for basic needs including food, cash assistance, medical coverage, child care, vocational services, rehabilitation services; developmental centers; adoption agencies; businesses that provide food, shelter, and social

services, and other necessities of life for economically disadvantaged individuals, individuals with physical, intellectual, and/or developmental disabilities, or otherwise needy individuals.

Human Services Operations shall be construed broadly to avoid any impacts to the delivery of human services, broadly defined.

- 9. Essential Infrastructure.** For purposes of this, individuals may leave their residence to provide any services or perform any work necessary to offer, provision, operate, maintain and repair Essential Infrastructure.

Essential Infrastructure includes, but is not limited to: food production, distribution, fulfillment centers, storage facilities, marinas, and sale; construction (including, but not limited to, construction required in response to this public health emergency, hospital construction, construction of long-term care facilities, public works construction, school construction, essential business construction, and housing construction); building management and maintenance; airport operations; operation and maintenance of utilities, including water, sewer, and gas; electrical (including power generation, distribution, and production of raw materials); distribution centers; oil and biofuel refining; roads, highways, railroads, and public transportation; ports; cybersecurity operations; flood control; solid waste and recycling collection and removal; and internet, video, and telecommunications systems (including the provision of essential global, national, and local infrastructure for computing services, business infrastructure, communications, and web-based services).

Essential Infrastructure shall be construed broadly to avoid any impacts to essential infrastructure, broadly defined.

- 10. Essential Governmental Functions.** For purposes of this Order, all first responders, emergency management personnel, emergency dispatchers, legislators, judges, court personnel, jurors and grand jurors, law enforcement and corrections personnel, hazardous materials responders, child protection and child welfare personnel, housing and shelter personnel, military, and other governmental employees working for or to support Essential Businesses and Operations are categorically exempt from this Order.

Essential Government Functions means all services provided by the State or any municipality, township, county, political subdivision, board, commission or agency of government and needed to ensure the continuing operation of the government agencies or to provide for or support the health, safety and welfare of the public, and including contractors performing Essential Government Functions. Each government body shall determine its Essential Governmental Functions and identify employees and/or contractors necessary to the performance of those functions.

This Order does not apply to the United States government. Nothing in this Order shall prohibit any individual from performing or accessing Essential Governmental Functions.

- 11. Businesses covered by this Order.** For the purposes of this Order, covered businesses include any for-profit, non-profit, or educational entities, regardless of the nature of the service, the function it performs, or its corporate or entity structure.

12. Essential Businesses and Operations. For the purposes of this Order, Essential Businesses and Operations means Healthcare and Public Health Operations, Human Services Operations, Essential Governmental Functions, and Essential Infrastructure, and the following:

- a. **CISA List.** On March 19, 2020, the U.S. Department of Homeland Security, Cybersecurity & Infrastructure Security Agency (CISA), issued a *Memorandum on Identification of Essential Critical Infrastructure Workers During COVID-19 Response*. The definition of Essential Businesses and Operations in this Order includes all the workers identified in that Memorandum.
- b. **Stores that sell groceries and medicine.** Grocery stores, pharmacies, certified farmers' markets, farm and produce stands, supermarkets, convenience stores, and other establishments engaged in the retail sale of groceries, canned food, dry goods, frozen foods, fresh fruits and vegetables, pet supplies, fresh meats, fish, and poultry, prepared food, alcoholic and non-alcoholic beverages, any other household consumer products (such as cleaning and personal care products), and specifically includes their supply chain and administrative support operations. This includes stores that sell groceries, medicine, including medication not requiring a medical prescription, and also that sell other non-grocery products, and products necessary to maintaining the safety, sanitation, and essential operation of residences and Essential Businesses and Operations;
- c. **Food, beverage, and licensed marijuana production and agriculture.** Food and beverage manufacturing, production, processing, and cultivation, including farming, livestock, fishing, baking, and other production agriculture, including cultivation, marketing, production, and distribution of animals and goods for consumption; licensed medical marijuana use, medical marijuana dispensaries and licensed medical marijuana cultivation centers; and businesses that provide food, shelter, and other necessities of life for animals, including animal shelters, rescues, shelters, kennels, and adoption facilities;
- d. **Organizations that provide charitable and social services.** Businesses and religious and secular nonprofit organizations, including food banks, when providing food, shelter, and social services, and other necessities of life for economically disadvantaged or otherwise needy individuals, individuals who need assistance as a result of this emergency, and people with disabilities;
- e. **Religious entities.** Religious facilities, entities and groups and religious gatherings, including weddings and funerals.
- f. **Media.** Newspapers, television, radio, and other media services;
- g. **First amendment protected speech.**
- h. **Gas stations and businesses needed for transportation.** Gas stations and auto supply, auto-repair, farm equipment, construction equipment, boat repair, and related facilities and bicycle shops and related facilities;
- i. **Financial and insurance institutions.** Bank, currency exchanges, consumer lenders, including but not limited, to pawnbrokers, consumer installment lenders and sales finance lenders, credit unions, appraisers, title companies, financial markets, trading and futures

exchanges, payday lenders, affiliates of financial institutions, entities that issue bonds, related financial institutions, and institutions selling financial products. Also insurance companies, underwriters, agents, brokers, and related insurance claims and agency services;

- j. Hardware and supply stores.** Hardware stores and businesses that sell electrical, plumbing, and heating material;
- k. Critical trades.** Building and Construction Tradesmen and Tradeswomen, and other trades including but not limited to plumbers, electricians, exterminators, cleaning and janitorial staff for commercial and governmental properties, security staff, operating engineers, HVAC, painting, moving and relocation services, and other service providers who provide services that are necessary to maintaining the safety, sanitation, and essential operation of residences, Essential Activities, and Essential Businesses and Operations;
- l. Mail, post, shipping, logistics, delivery, and pick-up services.** Post offices and other businesses that provide shipping and delivery services, and businesses that ship or deliver groceries, food, alcoholic and non-alcoholic beverages, goods, vehicles or services to end users or through commercial channels;
- m. Educational institutions.** Educational institutions-including public and private pre-K-12 schools, colleges, and universities-for purposes of facilitating distance learning, performing critical research, or performing essential functions, provided that social distancing of six-feet per person is maintained to the greatest extent possible. This Order is consistent with and does not amend or supersede prior Orders regarding the closure of schools;
- n. Laundry services.** Laundromats, dry cleaners, industrial laundry services, and laundry service providers;
- o. Restaurants for consumption off-premises.** Restaurants and other facilities that prepare and serve food, but only for consumption off-premises, through such means as in-house delivery, third-party delivery, drive-through, curbside pick-up, and carry-out. Schools and other entities that typically provide food services to students or members of the public may continue to do so under this Order on the condition that the food is provided to students or members of the public on a pick-up and takeaway basis only. Schools and other entities that provide food services under this exemption shall not permit the food to be eaten at the site where it is provided, or at any other gathering site due to the virus's propensity to physically impact surfaces and personal property. This Order is consistent with and does not amend or supersede prior Orders regarding the closure of restaurants;
- p. Supplies to work from home.** Businesses that sell, manufacture, or supply products needed for people to work from home;
- q. Supplies for Essential Businesses and Operations.** Businesses that sell, manufacture, or supply other Essential Businesses and Operations with the support or materials necessary to operate, including computers, audio and video electronics, household appliances; IT and telecommunication equipment; hardware, paint, flat glass; electrical, plumbing and heating material; sanitary equipment; personal hygiene products; food, food additives, ingredients and components; medical and orthopedic equipment; optics and photography equipment; diagnostics, food and beverages, chemicals, soaps and detergent; and firearm and ammunition suppliers and retailers for purposes of safety and security;

- r. **Transportation.** Airlines, taxis, transportation network providers (such as Uber and Lyft), vehicle rental services, paratransit, marinas, docks, boat storage, and other private, public, and commercial transportation and logistics providers necessary for Essential Activities and other purposes expressly authorized in this Order;
 - s. **Home-based care and services.** Home-based care for adults, seniors, children, and/or people with developmental disabilities, intellectual disabilities, substance use disorders, and/or mental illness, including caregivers such as nannies who may travel to the child's home to provide care, and other in-home services including meal delivery;
 - t. **Residential facilities and shelters.** Residential facilities and shelters for adults, seniors, children, pets, and/or people with developmental disabilities, intellectual disabilities, substance use disorders, and/or mental illness;
 - u. **Professional services.** Professional services, such as legal services, accounting services, insurance services, real estate services (including appraisal and title services);
 - v. **Manufacture, distribution, and supply chain for critical products and industries.** Manufacturing companies, distributors, and supply chain companies producing and supplying essential products and services in and for industries such as pharmaceutical, technology, biotechnology, healthcare, chemicals and sanitization, waste pickup and disposal, agriculture, food and beverage, transportation, energy, steel and steel products, petroleum and fuel, mining, construction, national defense, communications, as well as products used by other Essential Businesses and Operations.
 - w. **Critical labor union functions.** Labor Union essential activities including the administration of health and welfare funds and personnel checking on the well-being and safety of members providing services in Essential Businesses and Operations - provided that these checks should be done by telephone or remotely where possible.
 - x. **Hotels and motels.** Hotels and motels, to the extent used for lodging and delivery or carry-out food services.
 - y. **Funeral services.** Funeral, mortuary, cremation, burial, cemetery, and related services.
- 13. Minimum Basic Operations.** For the purposes of this Order, Minimum Basic Operations include the following, provided that employees comply with Social Distancing Requirements, to the extent possible, while carrying out such operations:
- a. The minimum necessary activities to maintain the value of the business's inventory, preserve the condition of the business's physical plant and equipment, ensure security, process payroll and employee benefits, or for related functions.
 - b. The minimum necessary activities to facilitate employees of the business being able to continue to work remotely from their residences.
- 14. Essential Travel.** For the purposes of this Order, Essential Travel includes travel for any of the following purposes. Individuals engaged in any Essential Travel must comply with all Social Distancing Requirements as defined in this Section.
- a. Any travel related to the provision of or access to Essential Activities, Essential Governmental Functions, Essential Businesses and Operations, or Minimum Basic Operations.

- b. Travel to care for elderly, minors, dependents, persons with disabilities, or other vulnerable persons.
- c. Travel to or from educational institutions for purposes of receiving materials for distance learning, for receiving meals, and any other related services.
- d. Travel to return to a place of residence from outside the jurisdiction.
- e. Travel required by law enforcement or court order, including to transport children pursuant to a custody agreement.
- f. Travel required for non-residents to return to their place of residence outside the State. Individuals are strongly encouraged to verify that their transportation out of the State remains available and functional prior to commencing such travel.

15. Social Distancing Requirements. For purposes of this Order, Social Distancing Requirements includes maintaining at least six-foot social distancing from other individuals, washing hands with soap and water for at least twenty seconds as frequently as possible or using hand sanitizer, covering coughs or sneezes (into the sleeve or elbow, not hands), regularly cleaning high-touch surfaces, and not shaking hands.

- a. **Required measures.** Essential Businesses and Operations and businesses engaged in Minimum Basic Operations must take proactive measures to ensure compliance with Social Distancing Requirements, including where possible:
 - i. **Designate six-foot distances.** Designating with signage, tape, or by other means six-foot spacing for employees and customers in line to maintain appropriate distance;
 - ii. **Hand sanitizer and sanitizing products.** Having hand sanitizer and sanitizing products readily available for employees and customers;
 - iii. **Separate operating hours for vulnerable populations.** Implementing separate operating hours for elderly and vulnerable customers; and
 - iv. **Online and remote access.** Posting online whether a facility is open and how best to reach the facility and continue services by phone or remotely.

16. Intent of this Order. The intent of this Order is to ensure that the maximum number of people self-isolate in their places of residence to the maximum extent feasible, while enabling essential services to continue, to slow the spread of COVID-19 to the greatest extent possible. When people need to leave their places of residence, whether to perform Essential Activities, or to otherwise facilitate authorized activities necessary for continuity of social and commercial life, they should at all times and as much as reasonably possible comply with Social Distancing Requirements. All provisions of this Order should be interpreted to effectuate this intent.

17. Enforcement. This Order may be enforced by State and local law enforcement to the extent set forth in Ohio law. To the extent any public official enforcing this Order has questions regarding what services are prohibited under this Order, the Director of Health hereby delegates to local health departments the authority to answer questions in writing and consistent with this Order.

18. COVID-19 Information and Checklist for Businesses/Employers. Business and employers are to take the following actions:

- a. Allow as many employees as possible to work from home by implementing policies in areas such as teleworking and video conferencing.
- b. Actively encourage sick employees to stay home until they are free of fever (without the use of medication) for at least 72 hours (three full days) AND symptoms have improved for at least 72 hours AND at least seven days have passed since symptoms first began. Do not require a healthcare provider's note to validate the illness or return to work of employees sick with acute respiratory illness; healthcare provider offices and medical facilities may be extremely busy and not able to provide such documentation in a timely way.
- c. Ensure that your sick leave policies are up to date, flexible, and non-punitive to allow sick employees to stay home to care for themselves, children, or other family members. Consider encouraging employees to do a self-assessment each day to check if they have any COVID-19 symptoms (fever, cough, or shortness of breath).
- d. Separate employees who appear to have acute respiratory illness symptoms from other employees and send them home immediately. Restrict their access to the business until they have recovered.
- e. Reinforce key messages — stay home when sick, use cough and sneeze etiquette, and practice hand hygiene — to all employees, and place posters in areas where they are most likely to be seen. Provide protection supplies such as soap and water, hand sanitizer, tissues, and no-touch disposal receptacles for use by employees.
- f. Frequently perform enhanced environmental cleaning of commonly touched surfaces, such as workstations, countertops, railings, door handles, and doorknobs. Use the cleaning agents that are usually used in these areas and follow the directions on the label. Provide disposable wipes so that commonly used surfaces can be wiped down by employees before each use.
- g. Be prepared to change business practices if needed to maintain critical operations (e.g., identify alternative suppliers, prioritize customers, or temporarily suspend some of your operations).

19. No limitation on authority. Nothing in this Order shall, in any way, alter or modify any existing legal authority allowing the State or any local health department from ordering (1) any quarantine or isolation that may require an individual to remain inside a particular residential property or medical facility for a limited period of time, including the duration of this public health emergency, or (2) any closure of a specific location for a limited period of time, including the duration of this public health emergency.

20. Savings clause. If any provision of this Order or its application to any person or circumstance is held invalid by any court of competent jurisdiction, this invalidity does not affect any other provision or application of this Order, which can be given effect without the invalid provision or application. To achieve this purpose, the provisions of this Order are declared to be severable.

21. Previous Orders superseded. This Order supersedes, only to the extent that it conflicts, and amends any previous Order which conflicts with the provisions of this Order.

22. Duration. This Order shall be effective at 11:59 p.m. on March 23, 2020 and remain in full force and effect until 11:59 p.m. on April 6, 2020, unless the Director of the Ohio Department of Health rescinds or modifies this Order at a sooner time and date.

COVID-19 is a respiratory disease that can result in serious illness or death, is caused by the SARS-CoV-2 virus, which is a new strain of coronavirus that had not been previously identified in humans and can easily spread from person to person. The virus is spread between individuals who are in close contact with each other (within about six feet) through respiratory droplets produced when an infected person coughs or sneezes. It may be possible that individuals can get COVID-19 by touching a surface or object that has the virus on it and then touching their own mouth, nose or eyes.

On January 23, 2020, the Ohio Department of Health issued a Director's Journal Entry making COVID-19 a Class A reportable disease in Ohio.

On January 28, 2020, the Ohio Department of Health hosted the first statewide call with local health departments and healthcare providers regarding COVID-19.

On January 30, 2020, the International Health Regulations Emergency Committee of the World Health Organization declared the outbreak of COVID-19 a public health emergency of international concern.

On January 31, 2020, Health and Human Services Secretary, Alex M. Azar II, declared a public health emergency for the United States to aid the nation's healthcare community in responding to COVID-19.

On February 1, 2020, the Ohio Department of Health issued a statewide Health Alert Network to provide local health departments and healthcare providers with updated guidance for COVID-19 and revised Person Under Investigation (PUI) criteria.

On February 3, 2020, the Ohio Department of Health trained over 140 personnel to staff a call center for COVID-19, in the event it was needed.

On February 5, 2020, the Ohio Department of Health began updating and notifying the media of the number of PUIs in Ohio every Tuesday and Thursday.

On February 6, 2020, the Ohio Department of Health updated all agency assistant directors and chiefs of staff on COVID-19 preparedness and status during the Governor's cabinet meeting.

On February 7, 2020, the Ohio Department of Health and the Ohio Emergency Management Agency met to conduct advance planning for COVID-19.

On February 13, 2020, the Ohio Department of Health conducted a Pandemic Tabletop Exercise with State agencies to review responsive actions should there be a pandemic in Ohio.

On February 14, 2020, the Ohio Department of Health held a conference call with health professionals across the state. The purpose of the call was to inform and engage the healthcare community in Ohio. Presentations were provided by the Department of Health, Hamilton County Public Health, and the Ohio State University.

On February 27, 2020, the Ohio Department of Health and the Ohio Emergency Management Agency briefed the directors of State agencies during the Governor's cabinet meeting regarding preparedness and the potential activation of the Emergency Operations Center.

On February 28, 2020, the "Governor DeWine, Health Director Update COVID-19 Prevention and Preparedness Plan" was sent to a broad range of associations representing healthcare, dental, long-term care, K-12 schools, colleges and universities, business, public transit, faith-based organizations, non-profit organizations, and local governments.

On March 2, 2020, the Ohio Department of Health activated a Joint Information Center to coordinate COVID-19 communications.

On March 5, 2020, the Ohio Department of Health hosted the Governor's Summit on COVID-19 Preparedness, a meeting with the Governor, cabinet agency directors, local health department commissioners, and their staff.

On March 6, 2020, the Ohio Department of Health opened a call center to answer questions from the public regarding COVID-19.

On March 9, 2020, testing by the Department of Health confirmed that three (3) patients were positive for COVID-19 in the State of Ohio. This confirms the presence of a potentially dangerous condition which may affect the health, safety and welfare of citizens of Ohio.

On March 9, 2020, the Ohio Emergency Management Agency activated the Emergency Operations Center.

On March 9, 2020, the Governor Declared a State of Emergency in Executive Order 2020-01D.

On March 11, 2020, the head of the World Health Organization declared COVID-19 a pandemic.

On March 11, 2020, testing by the Ohio Department of Health confirmed that one (1) more patient was positive for COVID-19 in the State of Ohio.

On March 11, 2020, the Ohio Departments of Health and Veterans Services issued a Joint Directors' Order to limit access to Ohio nursing homes and similar facilities.

On March 15, 2020, the Ohio Department of Health issued a Director's Order to limit access to Ohio's jails and detention facilities.

On March 15, 2020, the Ohio Department of Health issued a Director's Order to limit the sale of food and beverages, liquor, beer and wine to carry-out and delivery only.

On March 15, 2020, the CDC issued Interim Guidance for mass gatherings or large community events, stating that such events that consist of 50 or more people should be cancelled or postponed.

On March 16, 2020 the Ohio Department of Health issued a Director's Order closing polling locations for the March 17, 2020 primary election.

On March 17, 2020 the Ohio Department of Health issued a Director's Order for the management of non-essential surgeries and procedures throughout Ohio.

On March 17, 2020 the Ohio Department of Health issued an Amended Director's Order to limit and/or prohibit mass gatherings and the closure of venues in the State of Ohio.

On March 19, 2020, the Ohio Department of Health issued a Director's Order closing hair salons, nail salons, barber shops, tattoo parlors, body piercing locations, and massage therapy locations.

Multiple areas of the United States are experiencing "community spread" of the virus that causes COVID-19. Community spread, defined as the transmission of an illness for which the source is unknown, means that isolation of known areas of infection is no longer enough to control spread.

The CDC reports that people are most contagious when they are most symptomatic (the sickest) however some spread might be possible before people show symptoms although that is not the main way the virus spreads.

Mass gatherings (10 or more persons) increase the risk of community transmission of the virus COVID-19.

Accordingly, to avoid an imminent threat with a high probability of widespread exposure to COVID-19 with a significant risk of substantial harm to a large number of people in the general population, including the elderly and people with weakened immune systems and chronic medical conditions, I hereby **ORDER** effective at 11:59 p.m. on March 23, 2020, all persons are to stay at home or their place of residence unless they are engaged in Essential Activities, Essential Governmental Functions, or to operate Essential Businesses and Operations as set forth in this Order. This Order shall remain in full force and effect until 11:59 p.m. on April 6, 2020, unless the Director of the Ohio Department of Health rescinds or modifies this Order at a sooner time and date. To the extent any public official enforcing this Order has questions regarding what services are prohibited under this Order, the Director of Health hereby delegates to local health departments the authority to answer questions in writing and consistent with this Order.



Amy Acton, MD, MPH
Director of Health


March 22, 2020



March 19, 2020

**MEMORANDUM ON IDENTIFICATION OF ESSENTIAL CRITICAL
INFRASTRUCTURE WORKERS DURING COVID-19 RESPONSE**

FROM: Christopher C. Krebs
Director
Cybersecurity and Infrastructure Security Agency (CISA)



As the Nation comes together to slow the spread of COVID-19, on March 16th, the President issued updated Coronavirus Guidance for America. This guidance states that:

“If you work in a critical infrastructure industry, as defined by the Department of Homeland Security, such as healthcare services and pharmaceutical and food supply, you have a special responsibility to maintain your normal work schedule.”

The Cybersecurity and Infrastructure Security Agency (CISA) executes the Secretary of Homeland Security’s responsibilities as assigned under the Homeland Security Act of 2002 to provide strategic guidance, promote a national unity of effort, and coordinate the overall federal effort to ensure the security and resilience of the Nation's critical infrastructure. CISA uses trusted partnerships with both the public and private sectors to deliver infrastructure resilience assistance and guidance to a broad range of partners.

In accordance with this mandate, and in collaboration with other federal agencies and the private sector, CISA developed an initial list of “Essential Critical Infrastructure Workers” to help State and local officials as they work to protect their communities, while ensuring continuity of functions critical to public health and safety, as well as economic and national security. The list can also inform critical infrastructure community decision-making to determine the sectors, sub-sectors, segments, or critical functions that should continue normal operations, appropriately modified to account for Centers for Disease Control (CDC) workforce and customer protection guidance.

The attached list identifies workers who conduct a range of operations and services that are essential to continued critical infrastructure viability, including staffing operations centers, maintaining and repairing critical infrastructure, operating call centers, working construction, and performing management functions, among others. The industries they support represent, but are not necessarily limited to, medical and healthcare, telecommunications, information technology systems, defense, food and agriculture, transportation and logistics, energy, water and wastewater, law enforcement, and public works.

We recognize that State, local, tribal, and territorial governments are ultimately in charge of implementing and executing response activities in communities under their jurisdiction, while the Federal Government is in a supporting role. As State and local communities consider COVID-19-related restrictions, CISA is offering this list to assist prioritizing activities related to continuity of operations and incident response, including the appropriate movement of critical infrastructure workers within and between jurisdictions.

Accordingly, this list is advisory in nature. It is not, nor should it be considered to be, a federal directive or standard in and of itself.

In addition, these identified sectors and workers are not intended to be the authoritative or exhaustive list of critical infrastructure sectors and functions that should continue during the COVID-19 response. Instead, State and local officials should use their own judgment in using their authorities and issuing implementation directives and guidance. Similarly, critical infrastructure industry partners will use their own judgment, informed by this list, to ensure continued operations of critical infrastructure services and functions. All decisions should appropriately balance public safety while ensuring the continued delivery of critical infrastructure services and functions.

CISA will continue to work with you and our partners in the critical infrastructure community to update this list as the Nation's response to COVID-19 evolves. We also encourage you to submit how you might use this list so that we can develop a repository of use cases for broad sharing across the country.

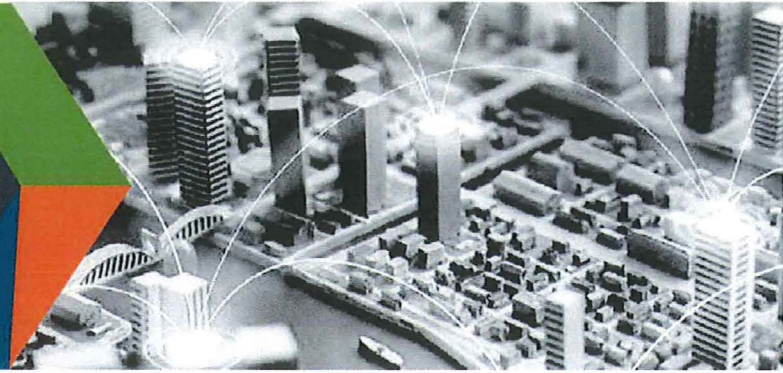
Should you have questions about this list, please contact CISA at CISA.CAT@cisa.dhs.gov.

Attachment: "Guidance on the Essential Critical Infrastructure Workforce: Ensuring Community and National Resilience in COVID-19 Response"



CISA
CYBER+INFRASTRUCTURE

DEFEND TODAY, SECURE TOMORROW



Guidance on the Essential Critical Infrastructure Workforce: Ensuring Community and National Resilience in COVID-19 Response

Version 1.0 (March 19, 2020)

THE IMPORTANCE OF ESSENTIAL CRITICAL INFRASTRUCTURE WORKERS

Functioning critical infrastructure is imperative during the response to the COVID-19 emergency for both public health and safety as well as community well-being. Certain critical infrastructure industries have a special responsibility in these times to continue operations.

This guidance and accompanying list are intended to support State, Local, and industry partners in identifying the critical infrastructure sectors and the essential workers needed to maintain the services and functions Americans depend on daily and that need to be able to operate resiliently during the COVID-19 pandemic response.

This document gives guidance to State, local, tribal, and territorial jurisdictions and the private sector on defining essential critical infrastructure workers. Promoting the ability of such workers to continue to work during periods of community restriction, access management, social distancing, or closure orders/directives is crucial to community resilience and continuity of essential functions.

CONSIDERATIONS FOR GOVERNMENT AND BUSINESS

This list was developed in consultation with federal agency partners, industry experts, and State and local officials, and is based on several key principles:

1. Response efforts to the COVID-19 pandemic are locally executed, State managed, and federally supported
2. Everyone should follow guidance from the CDC, as well as State and local government officials, regarding strategies to limit disease spread.
3. Workers should be encouraged to work remotely when possible and focus on core business activities. In-person, non-mandatory activities should be delayed until the resumption of normal operations.
4. When continuous remote work is not possible, businesses should enlist strategies to reduce the likelihood of spreading the disease. This includes, but is not necessarily limited to, separating staff by off-setting shift hours or days and/or social distancing. These steps can preserve the workforce and allow operations to continue.

CONNECT WITH US
www.cisa.gov

For more information,
email CISA.CAT@cisa.dhs.gov



[Linkedin.com/company/cybersecurity-and-infrastructure-security-agency](https://www.linkedin.com/company/cybersecurity-and-infrastructure-security-agency)



@CISAgov | @cyber | @uscert_gov



[Facebook.com/CISA](https://www.facebook.com/CISA)

Essential Critical Infrastructure Workforce

5. All organizations should implement their business continuity and pandemic plans, or put plans in place if they do not exist. Delaying implementation is not advised and puts at risk the viability of the business and the health and safety of the employees.
6. In the modern economy, reliance on technology and just-in-time supply chains means that certain workers must be able to access certain sites, facilities, and assets to ensure continuity of functions.
7. Government employees, such as emergency managers, and the business community need to establish and maintain lines of communication.
8. When government and businesses engage in discussions about critical infrastructure workers, they need to consider the implications of business operations beyond the jurisdiction where the asset or facility is located. Businesses can have sizeable economic and societal impacts as well as supply chain dependencies that are geographically distributed.
9. Whenever possible, jurisdictions should align access and movement control policies related to critical infrastructure workers to lower the burden of workers crossing jurisdictional boundaries.

IDENTIFYING ESSENTIAL CRITICAL INFRASTRUCTURE WORKERS

The following list of sectors and identified essential critical infrastructure workers are an initial recommended set and are intended to be overly inclusive reflecting the diversity of industries across the United States. CISA will continually solicit and accept feedback on the list (both sectors/sub sectors and identified essential workers) and will evolve the list in response to stakeholder feedback. We will also use our various stakeholder engagement mechanisms to work with partners on how they are using this list and share those lessons learned and best practices broadly. We ask that you share your feedback, both positive and negative on this list so we can provide the most useful guidance to our critical infrastructure partners. **Feedback can be sent to CISA.CAT@CISA.DHS.GOV.**



CONNECT WITH US
www.cisa.gov

For more information,
email CISA.CAT@cisa.dhs.gov



[LinkedIn.com/company/cybersecurity-and-infrastructure-security-agency](https://www.linkedin.com/company/cybersecurity-and-infrastructure-security-agency)



[@CISAgov](https://twitter.com/CISAgov) | [@cyber](https://twitter.com/cyber) | [@uscrt_gov](https://twitter.com/uscrt_gov)



[Facebook.com/CISA](https://www.facebook.com/CISA)

HEALTHCARE / PUBLIC HEALTH

- Workers providing COVID-19 testing; Workers that perform critical clinical research needed for COVID-19 response
- Caregivers (e.g., physicians, dentists, psychologists, mid-level practitioners, nurses and assistants, infection control and quality assurance personnel, pharmacists, physical and occupational therapists and assistants, social workers, speech pathologists and diagnostic and therapeutic technicians and technologists)
- Hospital and laboratory personnel (including accounting, administrative, admitting and discharge, engineering, epidemiological, source plasma and blood donation, food service, housekeeping, medical records, information technology and operational technology, nutritionists, sanitarians, respiratory therapists, etc.)
- Workers in other medical facilities (including Ambulatory Health and Surgical, Blood Banks, Clinics, Community Mental Health, Comprehensive Outpatient rehabilitation, End Stage Renal Disease, Health Departments, Home Health care, Hospices, Hospitals, Long Term Care, Organ Pharmacies, Procurement Organizations, Psychiatric Residential, Rural Health Clinics and Federally Qualified Health Centers)
- Manufacturers, technicians, logistics and warehouse operators, and distributors of medical equipment, personal protective equipment (PPE), medical gases, pharmaceuticals, blood and blood products, vaccines, testing materials, laboratory supplies, cleaning, sanitizing, disinfecting or sterilization supplies, and tissue and paper towel products
- Public health / community health workers, including those who compile, model, analyze and communicate public health information
- Blood and plasma donors and the employees of the organizations that operate and manage related activities
- Workers that manage health plans, billing, and health information, who cannot practically work remotely
- Workers who conduct community-based public health functions, conducting epidemiologic surveillance, compiling, analyzing and communicating public health information, who cannot practically work remotely
- Workers performing cybersecurity functions at healthcare and public health facilities, who cannot practically work remotely
- Workers conducting research critical to COVID-19 response
- Workers performing security, incident management, and emergency operations functions at or on behalf of healthcare entities including healthcare coalitions, who cannot practically work remotely
- Workers who support food, shelter, and social services, and other necessities of life for economically disadvantaged or otherwise needy individuals, such as those residing in shelters
- Pharmacy employees necessary for filling prescriptions
- Workers performing mortuary services, including funeral homes, crematoriums, and cemetery workers
- Workers who coordinate with other organizations to ensure the proper recovery, handling, identification, transportation, tracking, storage, and disposal of human remains and personal effects; certify cause of death; and facilitate access to mental/behavioral health services to the family members, responders, and survivors of an incident

CONNECT WITH US

www.cisa.gov

For more information,
email CISA.CAT@cisa.dhs.gov



[Linkedin.com/company/cybersecurity-and-infrastructure-security-agency](https://www.linkedin.com/company/cybersecurity-and-infrastructure-security-agency)



[@CISAgov](https://twitter.com/CISAgov) | [@cyber](https://twitter.com/cyber) | [@uscert_gov](https://twitter.com/uscert_gov)



[Facebook.com/CISA](https://www.facebook.com/CISA)

LAW ENFORCEMENT, PUBLIC SAFETY, FIRST RESPONDERS

- Personnel in emergency management, law enforcement, Emergency Management Systems, fire, and corrections, including front line and management
- Emergency Medical Technicians
- 911 call center employees
- Fusion Center employees
- Hazardous material responders from government and the private sector.
- Workers – including contracted vendors – who maintain digital systems infrastructure supporting law enforcement and emergency service operations.

FOOD AND AGRICULTURE

- Workers supporting groceries, pharmacies and other retail that sells food and beverage products
- Restaurant carry-out and quick serve food operations - Carry-out and delivery food employees
- Food manufacturer employees and their supplier employees—to include those employed in food processing (packers, meat processing, cheese plants, milk plants, produce, etc.) facilities; livestock, poultry, seafood slaughter facilities; pet and animal feed processing facilities; human food facilities producing by-products for animal food; beverage production facilities; and the production of food packaging
- Farm workers to include those employed in animal food, feed, and ingredient production, packaging, and distribution; manufacturing, packaging, and distribution of veterinary drugs; truck delivery and transport; farm and fishery labor needed to produce our food supply domestically
- Farm workers and support service workers to include those who field crops; commodity inspection; fuel ethanol facilities; storage facilities; and other agricultural inputs
- Employees and firms supporting food, feed, and beverage distribution, including warehouse workers, vendor-managed inventory controllers and blockchain managers
- Workers supporting the sanitation of all food manufacturing processes and operations from wholesale to retail
- Company cafeterias - in-plant cafeterias used to feed employees
- Workers in food testing labs in private industries and in institutions of higher education
- Workers essential for assistance programs and government payments
- Employees of companies engaged in the production of chemicals, medicines, vaccines, and other substances used by the food and agriculture industry, including pesticides, herbicides, fertilizers, minerals, enrichments, and other agricultural production aids
- Animal agriculture workers to include those employed in veterinary health; manufacturing and distribution of animal medical materials, animal vaccines, animal drugs, feed ingredients, feed, and bedding, etc.; transportation of live animals, animal medical materials; transportation of deceased animals for disposal; raising of animals for food; animal production operations; slaughter and packing plants and associated regulatory and government workforce
- Workers who support the manufacture and distribution of forest products, including, but not limited to timber, paper, and other wood products
- Employees engaged in the manufacture and maintenance of equipment and other infrastructure necessary to agricultural production and distribution

CONNECT WITH US

www.cisa.gov

For more information,
email CISA.CAT@cisa.dhs.gov



[Linkedin.com/company/cybersecurity-and-infrastructure-security-agency](https://www.linkedin.com/company/cybersecurity-and-infrastructure-security-agency)



[@CISAgov](https://twitter.com/CISAgov) | [@cyber](https://twitter.com/@cyber) | [@uscrt_gov](https://twitter.com/@uscrt_gov)



[Facebook.com/CISA](https://www.facebook.com/CISA)

ENERGY

Electricity industry:

- Workers who maintain, ensure, or restore the generation, transmission, and distribution of electric power, including call centers, utility workers, reliability engineers and fleet maintenance technicians
- Workers needed for safe and secure operations at nuclear generation
- Workers at generation, transmission, and electric blackstart facilities
- Workers at Reliability Coordinator (RC), Balancing Authorities (BA), and primary and backup Control Centers (CC), including but not limited to independent system operators, regional transmission organizations, and balancing authorities
- Mutual assistance personnel
- IT and OT technology staff – for EMS (Energy Management Systems) and Supervisory Control and Data Acquisition (SCADA) systems, and utility data centers; Cybersecurity engineers; cybersecurity risk management
- Vegetation management crews and traffic workers who support
- Environmental remediation/monitoring technicians
- Instrumentation, protection, and control technicians

Petroleum workers:

- Petroleum product storage, pipeline, marine transport, terminals, rail transport, road transport
- Crude oil storage facilities, pipeline, and marine transport
- Petroleum refinery facilities
- Petroleum security operations center employees and workers who support emergency response services
- Petroleum operations control rooms/centers
- Petroleum drilling, extraction, production, processing, refining, terminal operations, transporting, and retail for use as end-use fuels or feedstocks for chemical manufacturing
- Onshore and offshore operations for maintenance and emergency response
- Retail fuel centers such as gas stations and truck stops, and the distribution systems that support them

Natural and propane gas workers:

- Natural gas transmission and distribution pipelines, including compressor stations
- Underground storage of natural gas
- Natural gas processing plants, and those that deal with natural gas liquids
- Liquefied Natural Gas (LNG) facilities
- Natural gas security operations center, natural gas operations dispatch and control rooms/centers natural gas emergency response and customer emergencies, including natural gas leak calls
- Drilling, production, processing, refining, and transporting natural gas for use as end-use fuels, feedstocks for chemical manufacturing, or use in electricity generation
- Propane gas dispatch and control rooms and emergency response and customer emergencies, including propane leak calls
- Propane gas service maintenance and restoration, including call centers

CONNECT WITH US
www.cisa.gov

For more information,
email CISA.CAT@cisa.dhs.gov



[Linkedin.com/company/cybersecurity-and-infrastructure-security-agency](https://www.linkedin.com/company/cybersecurity-and-infrastructure-security-agency)



[@CISAgov](https://twitter.com/CISAgov) | [@cyber](https://twitter.com/cyber) | [@uscert_gov](https://twitter.com/uscert_gov)



[Facebook.com/CISA](https://www.facebook.com/CISA)

Essential Critical Infrastructure Workforce

- Processing, refining, and transporting natural liquids, including propane gas, for use as end-use fuels or feedstocks for chemical manufacturing
- Propane gas storage, transmission, and distribution centers

WATER AND WASTEWATER

Employees needed to operate and maintain drinking water and wastewater/drainage infrastructure, including:

- Operational staff at water authorities
- Operational staff at community water systems
- Operational staff at wastewater treatment facilities
- Workers repairing water and wastewater conveyances and performing required sampling or monitoring
- Operational staff for water distribution and testing
- Operational staff at wastewater collection facilities
- Operational staff and technical support for SCADA Control systems
- Chemical disinfectant suppliers for wastewater and personnel protection
- Workers that maintain digital systems infrastructure supporting water and wastewater operations

TRANSPORTATION AND LOGISTICS

- Employees supporting or enabling transportation functions, including dispatchers, maintenance and repair technicians, warehouse workers, truck stop and rest area workers, and workers that maintain and inspect infrastructure (including those that require cross-border travel)
- Employees of firms providing services that enable logistics operations, including cooling, storing, packaging, and distributing products for wholesale or retail sale or use.
- Mass transit workers
- Workers responsible for operating dispatching passenger, commuter and freight trains and maintaining rail infrastructure and equipment
- Maritime transportation workers - port workers, mariners, equipment operators
- Truck drivers who haul hazardous and waste materials to support critical infrastructure, capabilities, functions, and services
- Automotive repair and maintenance facilities
- Manufacturers and distributors (to include service centers and related operations) of packaging materials, pallets, crates, containers, and other supplies needed to support manufacturing, packaging staging and distribution operations
- Postal and shipping workers, to include private companies
- Employees who repair and maintain vehicles, aircraft, rail equipment, marine vessels, and the equipment and infrastructure that enables operations that encompass movement of cargo and passengers
- Air transportation employees, including air traffic controllers, ramp personnel, aviation security, and aviation management
- Workers who support the maintenance and operation of cargo by air transportation, including flight crews, maintenance, airport operations, and other on- and off- airport facilities workers

CONNECT WITH US

www.cisa.gov

For more information,
email CISA.CAT@cisa.dhs.gov



[Linkedin.com/company/cybersecurity-and-infrastructure-security-agency](https://www.linkedin.com/company/cybersecurity-and-infrastructure-security-agency)



[@CISAgov](https://twitter.com/CISAgov) | [@cyber](https://twitter.com/cyber) | [@uscert_gov](https://twitter.com/uscert_gov)



[Facebook.com/CISA](https://www.facebook.com/CISA)

Essential Critical Infrastructure Workforce

PUBLIC WORKS

- Workers who support the operation, inspection, and maintenance of essential dams, locks and levees
- Workers who support the operation, inspection, and maintenance of essential public works facilities and operations, including bridges, water and sewer main breaks, fleet maintenance personnel, construction of critical or strategic infrastructure, traffic signal maintenance, emergency location services for buried utilities, maintenance of digital systems infrastructure supporting public works operations, and other emergent issues
- Workers such as plumbers, electricians, exterminators, and other service providers who provide services that are necessary to maintaining the safety, sanitation, and essential operation of residences
- Support, such as road and line clearing, to ensure the availability of needed facilities, transportation, energy and communications
- Support to ensure the effective removal, storage, and disposal of residential and commercial solid waste and hazardous waste

COMMUNICATIONS AND INFORMATION TECHNOLOGY

Communications:

- Maintenance of communications infrastructure- including privately owned and maintained communication systems- supported by technicians, operators, call-centers, wireline and wireless providers, cable service providers, satellite operations, undersea cable landing stations, Internet Exchange Points, and manufacturers and distributors of communications equipment
- Workers who support radio, television, and media service, including, but not limited to front line news reporters, studio, and technicians for newsgathering and reporting
- Workers at Independent System Operators and Regional Transmission Organizations, and Network Operations staff, engineers and/or technicians to manage the network or operate facilities
- Engineers, technicians and associated personnel responsible for infrastructure construction and restoration, including contractors for construction and engineering of fiber optic cables
- Installation, maintenance and repair technicians that establish, support or repair service as needed
- Central office personnel to maintain and operate central office, data centers, and other network office facilities
- Customer service and support staff, including managed and professional services as well as remote providers of support to transitioning employees to set up and maintain home offices, who interface with customers to manage or support service environments and security issues, including payroll, billing, fraud, and troubleshooting
- Dispatchers involved with service repair and restoration

Information Technology:

- Workers who support command centers, including, but not limited to Network Operations Command Center, Broadcast Operations Control Center and Security Operations Command Center
- Data center operators, including system administrators, HVAC & electrical engineers, security personnel, IT managers, data transfer solutions engineers, software and hardware engineers, and database administrators
- Client service centers, field engineers, and other technicians supporting critical infrastructure, as well as

CONNECT WITH US
www.cisa.gov

For more information,
email CISA.CAT@cisa.dhs.gov



[Linkedin.com/company/cybersecurity-and-infrastructure-security-agency](https://www.linkedin.com/company/cybersecurity-and-infrastructure-security-agency)



[@CISAgov](https://twitter.com/CISAgov) | [@cyber](https://twitter.com/cyber) | [@uscert_gov](https://twitter.com/uscert_gov)



[Facebook.com/CISA](https://www.facebook.com/CISA)

Essential Critical Infrastructure Workforce

manufacturers and supply chain vendors that provide hardware and software, and information technology equipment (to include microelectronics and semiconductors) for critical infrastructure

- Workers responding to cyber incidents involving critical infrastructure, including medical facilities, SLTT governments and federal facilities, energy and utilities, and banks and financial institutions, and other critical infrastructure categories and personnel
- Workers supporting the provision of essential global, national and local infrastructure for computing services (incl. cloud computing services), business infrastructure, web-based services, and critical manufacturing
- Workers supporting communications systems and information technology used by law enforcement, public safety, medical, energy and other critical industries
- Support required for continuity of services, including janitorial/cleaning personnel

OTHER COMMUNITY-BASED GOVERNMENT OPERATIONS AND ESSENTIAL FUNCTIONS

- Workers to ensure continuity of building functions
- Security staff to maintain building access control and physical security measures
- Elections personnel
- Federal, State, and Local, Tribal, and Territorial employees who support Mission Essential Functions and communications networks
- Trade Officials (FTA negotiators; international data flow administrators)
- Weather forecasters
- Workers that maintain digital systems infrastructure supporting other critical government operations
- Workers at operations centers necessary to maintain other essential functions
- Workers who support necessary credentialing, vetting and licensing operations for transportation workers
- Customs workers who are critical to facilitating trade in support of the national emergency response supply chain
- Educators supporting public and private K-12 schools, colleges, and universities for purposes of facilitating distance learning or performing other essential functions, if operating under rules for social distancing
- Hotel Workers where hotels are used for COVID-19 mitigation and containment measures

CRITICAL MANUFACTURING

- Workers necessary for the manufacturing of materials and products needed for medical supply chains, transportation, energy, communications, food and agriculture, chemical manufacturing, nuclear facilities, the operation of dams, water and wastewater treatment, emergency services, and the defense industrial base.

HAZARDOUS MATERIALS

- Workers at nuclear facilities, workers managing medical waste, workers managing waste from pharmaceuticals and medical material production, and workers at laboratories processing test kits
- Workers who support hazardous materials response and cleanup
- Workers who maintain digital systems infrastructure supporting hazardous materials management operations

CONNECT WITH US
www.cisa.gov

For more information,
email CISA.CAT@cisa.dhs.gov



[Linkedin.com/company/cybersecurity-and-infrastructure-security-agency](https://www.linkedin.com/company/cybersecurity-and-infrastructure-security-agency)



[@CISAgov](https://twitter.com/CISAgov) | [@cyber](https://twitter.com/cyber) | [@uscert_gov](https://twitter.com/uscert_gov)



[Facebook.com/CISA](https://www.facebook.com/CISA)

Essential Critical Infrastructure Workforce

FINANCIAL SERVICES

- Workers who are needed to process and maintain systems for processing financial transactions and services (e.g., payment, clearing, and settlement; wholesale funding; insurance services; and capital markets activities)
- Workers who are needed to provide consumer access to banking and lending services, including ATMs, and to move currency and payments (e.g., armored cash carriers)
- Workers who support financial operations, such as those staffing data and security operations centers

CHEMICAL

- Workers supporting the chemical and industrial gas supply chains, including workers at chemical manufacturing plants, workers in laboratories, workers at distribution facilities, workers who transport basic raw chemical materials to the producers of industrial and consumer goods, including hand sanitizers, food and food additives, pharmaceuticals, textiles, and paper products.
- Workers supporting the safe transportation of chemicals, including those supporting tank truck cleaning facilities and workers who manufacture packaging items
- Workers supporting the production of protective cleaning and medical solutions, personal protective equipment, and packaging that prevents the contamination of food, water, medicine, among others essential products
- Workers supporting the operation and maintenance of facilities (particularly those with high risk chemicals and/or sites that cannot be shut down) whose work cannot be done remotely and requires the presence of highly trained personnel to ensure safe operations, including plant contract workers who provide inspections
- Workers who support the production and transportation of chlorine and alkali manufacturing, single-use plastics, and packaging that prevents the contamination or supports the continued manufacture of food, water, medicine, and other essential products, including glass container manufacturing

DEFENSE INDUSTRIAL BASE

- Workers who support the essential services required to meet national security commitments to the federal government and U.S. Military. These individuals, include but are not limited to, aerospace; mechanical and software engineers, manufacturing/production workers; IT support; security staff; security personnel; intelligence support, aircraft and weapon system mechanics and maintainers
- Personnel working for companies, and their subcontractors, who perform under contract to the Department of Defense providing materials and services to the Department of Defense, and government-owned/contractor-operated and government-owned/government-operated facilities

CONNECT WITH US
www.cisa.gov

For more information,
email CISA.CAT@cisa.dhs.gov



[Linkedin.com/company/cybersecurity-and-infrastructure-security-agency](https://www.linkedin.com/company/cybersecurity-and-infrastructure-security-agency)



[@CISAgov](https://twitter.com/CISAgov) | [@cyber](https://twitter.com/cyber) | [@uscert_gov](https://twitter.com/uscert_gov)



[Facebook.com/CISA](https://www.facebook.com/CISA)