

SIMPLI-FLEX®

DISPENSER MOUNTING INSTRUCTIONS

MOUNTING THE DISPENSER:

1. Lay out and cut hole(s) for dispenser.
2. Remove gasket (2), pusher (3), and spring (7).
3. Pre-drill holes for #8 x 3/4" mounting screws (5). Slide dispenser into hole and secure through keyhole slots with screws (5) and studs (6) provided.
4. Reassemble dispenser.

LOADING THE DISPENSER:

Your Modular SIMPLI-FLEX® dispenser is completely self-adjusting and can dispense virtually any size or shape of cup!

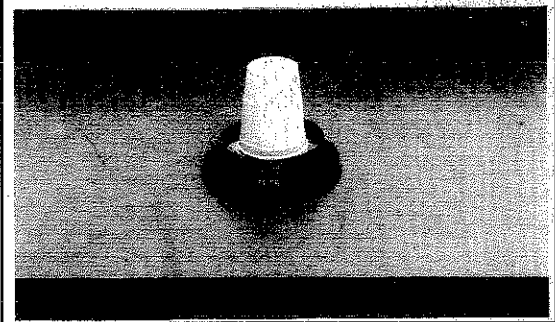
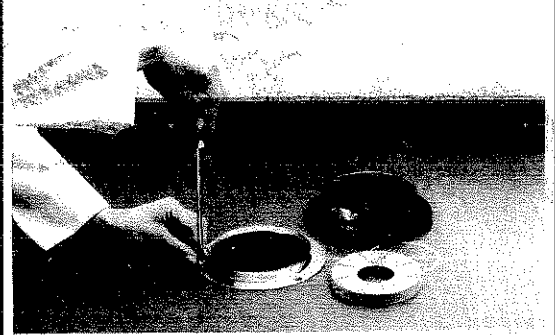
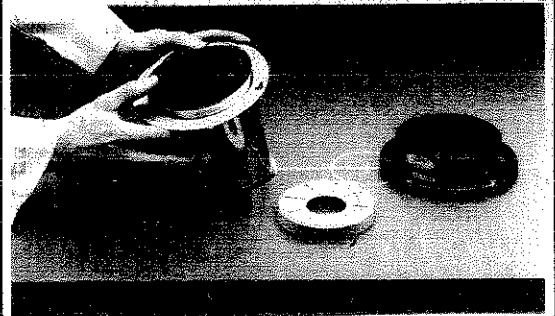
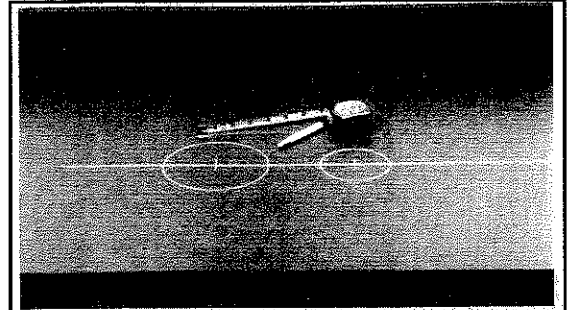
1. Unwrap cups and gently push into dispenser tube, **BOTTOM OF CUP FACING OUT.**

CLEANING THE DISPENSER:

Your Modular SIMPLI-FLEX® dispenser is designed to provide an easy means of dispensing. The dispenser can be disassembled using only a phillips screwdriver to make regular cleaning simple and painless! Please clean dispenser before use. Regular cleaning will prolong the life of the dispenser, keep it looking new and ensure sanitary dispensing.

TO CLEAN DISPENSER:

1. Remove clamp ring (1), screws (5), and studs (6), to remove dispenser from mounting location.
2. Remove lid (4), gasket (2), pusher (3), and spring (7).
3. Clean lid, clamp ring and gasket in hot, soapy water. Air dry.
NOTE: these parts are dishwasher safe.
4. Rinse inside of dispenser tube and wipe with a non-toxic cleaner/sanitizer.
5. Exterior of tube may be cleaned with any glass cleaner and a soft cloth.
6. Reassemble dispenser in reverse of above.



CATALOG NUMBER	APPLICATION	DESCRIPTION
1007699	Elevator type, cabinet/counter mount, for paper, plastic cups	CSF1003L
1007656	Elevator type, cabinet/counter mount, for paper, plastic, foam cups	CSF1004L
1015202	Elevator type, cabinet/counter mount, for paper, plastic, foam cups	CSF1004L DELUXE
1008157	Elevator type, cabinet/counter mount, for paper, plastic, foam cups	CSF1005R
1015201	Elevator type, cabinet/counter mount, for paper, plastic, foam cups	CSF1005R DELUXE
1008703 1009959	Elevator type, cabinet/counter mount, for paper, plastic, foam cups	CSF1006H

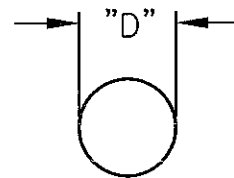
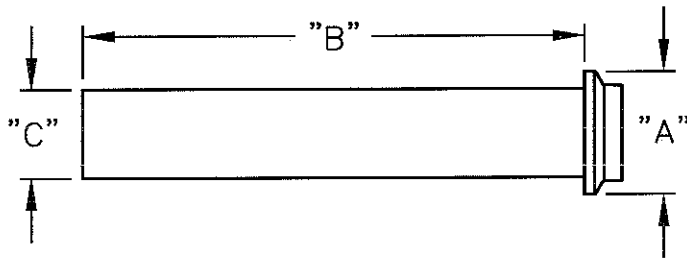


SIMPLI-FLEX®

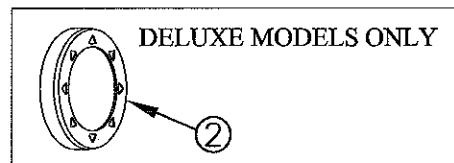
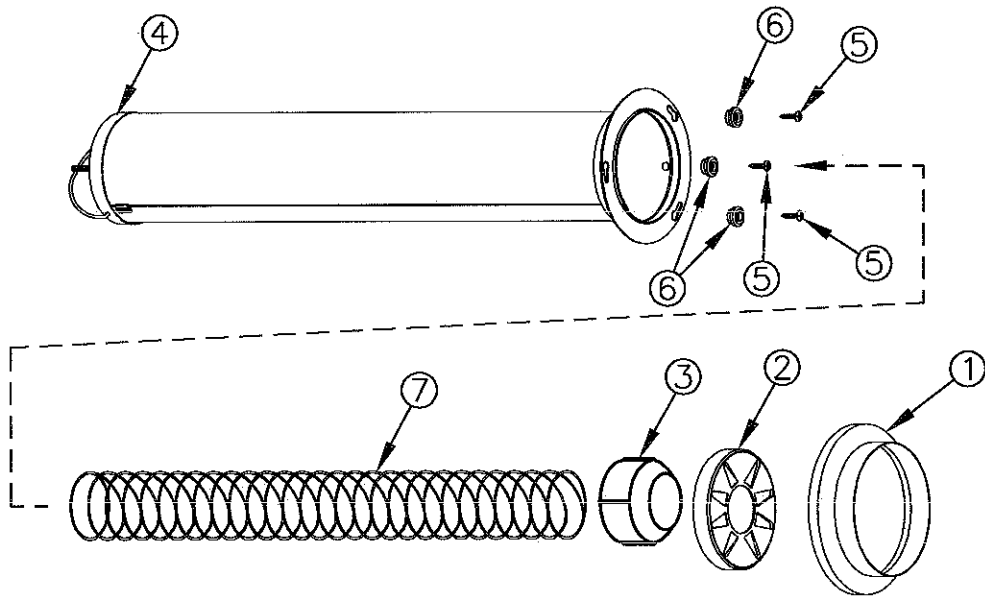
MOUNTING REFERENCE DIMENSIONS

REFER TO CHART AND DIAGRAM
BELOW TO ESTABLISH MOUNTING
HOLE SIZE AND MINIMUM
CLEARANCE FOR EASE OF
INSTALLATION AND SERVICE
ALLOW AT LEAST 1/4" (6.35mm)
BETWEEN DISPENSERS
(DIMENSION "A")

	CSF1003L	CSF1004L	CSF1005R	CSF1006H
	INCHES(mm)	INCHES(mm)	INCHES(mm)	INCHES(mm)
A	4-21/32 (118)	5-17/32 (141)	6-23/32 (171)	7-25/32 (198)
B	22-1/2 (572)	22-1/2 (572)	22-1/2 (572)	22-1/2 (572)
C	3-3/32 (79)	4 (102)	5 (127)	6-5/32 (156)
D	3-11/16 (94)	4-9/16 (116)	5-1/2 (140)	6-9/16 (167)



MOUNTING HOLE
DIAMETER



MODULAR® DISPENSING SYSTEMS

DIVISION OF TOMLINSON INDUSTRIES
13700 Broadway Ave.
Cleveland Ohio 44125-1992
Phone: 216/587-3400
Fax: 216/587-0733
www.tomlinsonind.com

World Class, Worldwide
©Tomlinson Industries 2012

DISTRIBUTED BY