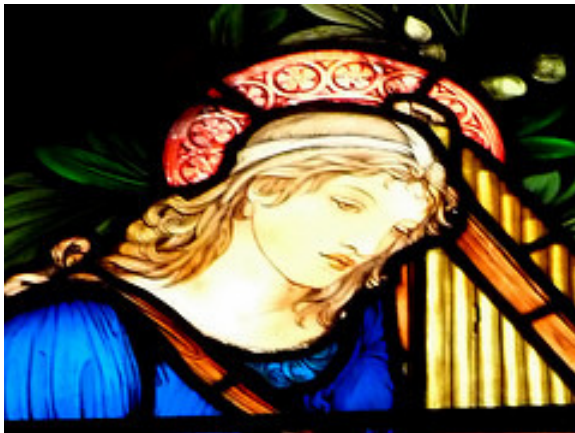




Parish Organ Campaign



The Saint Joan of Arc Parish Organ Campaign

Saint Joan of Arc Church is blessed with a fine acoustical environment for sacred music in the choral and instrumental realm. The size of the Church's acoustic volume suggests two musical tenants: its primary responsibility is to accompany both the Choir and congregation in liturgical worship, and to offer a platform on which to celebrate the wide breadth of organ repertoire whose variety will bless and enrich the worship life of the Parish for generations to come.

It is said in *Sing to the Lord: Music in Divine Worship*, 2, "A cry from deep within our being, music is a way for God to lead us to the realm of higher things... Music is... a sign of God's love for us and of our love for him... Singing together in church expresses so well the sacramental presence of God to his people."

The first phase of the Saint Joan of Arc Organ project is to select an instrument to adequately meet the particular needs of our Parish. It has been determined that our best option, due to several considerations including acoustic treatment and architecture, is a digital instrument. The parish has chosen to work with Allen Organ Company, a leader in the newest trends in technology and worship resources.

The new Allen Organ will have 3 manuals, 50 or more stops, a digital representation of 50 or more ranks and will be used for parish liturgies and for major celebrations of the entire Saint Joan of Arc community, including possible recitals and a

concert series. The Organ will complement the Boston grand piano which serves the Adult Choir for weekend Masses and all other services. It will also complement the Church's Sanctuary space which features a beautiful marble façade with terrazzo flooring and a great stained glass window depicting the life of Saint Cecelia, the patron saint of music, directly above and behind the altar.

The new Organ's sound will be round and full. The new Organ will be the fulfillment of a hope in the professional development of sacred music in this parish and a fine example, again, of the best and newest practices in technology and worship resources throughout this Diocese and throughout the wider Church.

The new Organ is engineered for a life span of at least thirty years and is a long term investment. Its console will be built of the finest solid hardwoods and the most durable materials for coping with changes in heat and humidity.

Parishioner Mr./Mrs.

_____ (of the _____
Company/Agency) is the campaign
chairperson. (Additional information on any
committee members or the chairperson may
be inserted here. If there will be no official
campaign committee, forward to the
following, or similar:)

St. Joan of Arc would be honored to have your contribution to this year's Parish raffle whose proceeds will directly fund our organ campaign. It is our stated goal to increase the performance of the Parish raffle by benefiting the ministerial and worship life of the Parish in this way.



Organ Features

The Organ console with accord with current AGO standards and will be a dimension of 65-1/4 x 51-1/2 x 58". It will feature an oak veneer finish and, most excitingly, stop lists from seven modes consisting of excellent quality midi samples from Classic Allen, the diapason-based English Cathedral Organ, Cavaille-Coll, Schlicker, Arp Schnitger, Aeolian-Skinner, and Orchestral platforms; thus, servicing all the major classic organ schools corresponding to their respective musical eras. Each mode receives its own authentic stop list according to original models.

Through advanced technology, Allen organs can be voiced both on a stop-by-stop and note-by-note basis, as found in pipe organs. This capability assures that the Allen Organ can be matched to the room in which it is installed, as well as specific musical needs.

With full MIDI capabilities on every division, the Allen organ's musical versatility becomes nearly limitless. Compatible with GM, GS as well as XG MIDI, the Allen

console is a perfect controller for today's blended worship requirements.

Organ Specifications

(Classic Allen Stoplist)

GREAT

16 Bourdon Doux (Sw)
 8 Diapason
 8 Flûte Harmonique
 8 Salicional (Sw)
 8 Voix Celeste (Sw)
 4 Octave
 4 Spitzflöte
 2 Fifteenth
 Mixture IV
 8 Trompette
 Chimes
 Tremulant
 Gt-Pd Unenclosed
 Melody Coupler Po>Gt
 Gt-Po Manual Transfer
 Tremulants Full

SWELL

16 Bourdon Doux
 8 Bourdon
 8 Salicional
 8 Voix Celeste
 4 Prestant
 4 Flûte
 2²/₃ Nasard
 2 Octavin
 1³/₅ Tierce
 Fourniture IV
 16 Basson
 8 Trompette
 8 Hautbois
 Tremulant
 Celesta
 Swell Unison Off

POSITIV

16 Contra Viole
 8 Holz Gedackt
 8 Voix Celeste II
 4 Prinzipal
 4 Koppelflöte
 2 Oktav
 1¹/₃ Quintflöte
 Mixture III
 8 Krummhorn
 Celesta (Sw)
 8 Festival Trumpet
 Positiv Unison Off
 Tremulant
 Positiv Unenclosed
 Positiv Express w/Swell

PEDAL

32 Contre Bourdon
 16 Diapason
 16 Bourdon
 16 Bourdon Doux (Sw)
 16 Contra Viole (Po)
 8 Octave
 8 Gedackt
 4 Choralbass
 Mixture III
 32 Contra Posaune
 16 Posaune
 16 Basson (Sw)
 8 Trompette
 4 Clarion
 Bass Coupler
 Alternate Tuning

ANTIPHONAL

Gt-Po-Pd Mains Off
 Gt-Po-Pd Antiphonal On
 Swell Mains Off
 Swell Antiphonal On