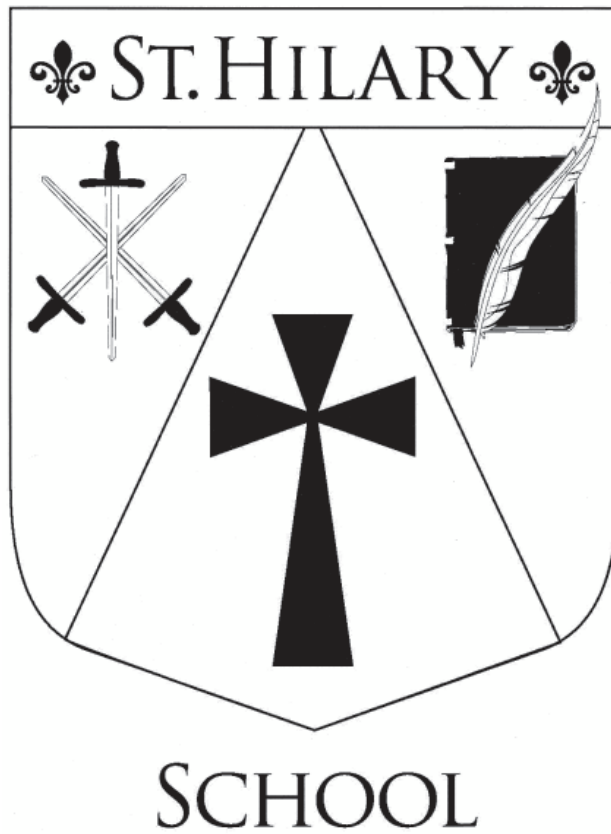


St. Hilary School
Family Handbook
2021-2022



Dear Parents:

Thank you for your support and cooperation as we prepare for the 2021-2022 school year.

As Catholic school educators, we are called to enrich the spiritual, emotional and intellectual lives of our students. In the coming school year, we will focus on our mission to serve one another and to live the Gospel message as compassionate, caring Christian Catholics. We look forward to working with you in the education of your child.

To guide us in our unified efforts with families, the following policies and rules have been adopted. These policies and rules help to create an atmosphere for learning and respect for individuals and the educational program. It is our intention that this handbook facilitates responsible procedures that enhance the spiritual, educational and social experiences of all students.

PLEASE NOTE: Due to COVID-19, during the 2021-2022 school year or for as long as the COVID-19 pandemic continues, certain provisions of this handbook will be superseded or modified by the COVID-19 Appendix found at the back of this handbook. Please be sure to familiarize yourself with this information.

Of note are the following affected sections, listed in the order in which they appear in this handbook:

School Hours

Absence

Health and Accident Release

Internet User Policy

Lunch/Recess Regulations

Appointments

Career Electives

Family Vacations

Field Trips

Health and Accident Policy

Transportation

Volunteer Program

If you are referring to one of the above-listed sections for information, please also check this appendix for a modification in response to COVID-19.

The school reserves the right to modify policies and procedures as needed as the COVID-19 situation continues and evolves.

Please take the time to review this handbook and to discuss it with your family. Please sign the contract on the following page and return to the school office by September 3, 2021.

Thank you,

Fr. Steve Brunovsky

Mrs. Jennifer Woodman

Mrs. Darcy Alexander

Educational and Conduct Contract
2021-2022

We have read on the St. Hilary School website the 2021-2022 St. Hilary School Family Handbook. We understand and agree to abide by the contents.

Family Name: _____

Parent Signature/Date: _____

Student Signature/Current Grade: _____

Student Signature/Current Grade: _____

Student Signature/Current Grade: _____

Student Signature/Current Grade: _____

Student Signature/Current Grade: _____

TABLE OF CONTENTS

Absence	Page 3
Academic Program	Page 8
Admission Policy	Page 2
Appointments	Page 4
Belief Statements	Page 2
Career Electives	Page 9
Cell Phones	Page 7
Discipline	Pages 4-5
Dress Code	Pages 10-17
Emergency Closings and Delays	Page 18
Evaluation	Page 9
Extended Care	Page 18
Family Vacations	Page 4
Field Trips	Page 18
Grading Scale	Page 9
Health and Accident Policy	Pages 18-19
Health and Accident Release	Page 4
High School Visitation	Page 19
Home/School Communication	Pages 19-20
Homework	Page 9
Honor Roll	Page 10
Internet User Policy Statement	Page 7
Kindergarten Admission	Page 2
Lunch/Recess Regulations	Pages 7-8
Mission Statement	Page 2
Parental Involvement Responsibilities	Page 24
Parking and Traffic	Page 20
Phone Calls	Page 20
Qualities of a Catholic School Graduate	Page 1
Religious Education Program	Pages 8-9
Retention	Page 10
Safety and Well Being	Pages 20-22
School Hours	Page 3
School Personnel	Page 3
Search and Seizure	Page 22
Social Services and Facilities	Page 22
Statement of Philosophy	Page 2
Student Codes	Pages 5-7
Tardiness / Early Dismissal	Pages 3-4
Threat Policy	Page 7
Transportation	Pages 22-24
Tuition and Fees	Page 24
Volunteer Program	Page 24
 DIOCESE OF CLEVELAND LEGAL POLICIES	
Family/Custodial Situations – Relationships with the School	Pages 24-25
Sexual Harassment and Sexual Violence	Page 25
Weapons	Pages 25-26
Youth Gangs	Page 26
Prevention	Page 27
 COVID-19 APPENDIX	
	Pages 28-32

QUALITIES OF A CATHOLIC SCHOOL GRADUATE

The Catholic School Graduate Is:

A faith-filled disciple of Christ who is:

- called by Baptism and nourished in the Eucharist
- active in the Sacramental life of the Church through regular participation in Eucharistic Liturgy and Reconciliation
- centered in Gospel values
- prayerful

A Christian leader who is:

- a decision maker whose conscience is formed by the teachings of the Catholic Church
- a witness to the faith
- a person of integrity
- respectful
- committed to justice
- collaborative
- a community builder
- a steward of the environment
- active in parish life

A centered, well-rounded person who is:

- self-confident
- self-disciplined
- open to growth
- responsible
- an active productive citizen

A loving person who is:

- compassionate
- kind
- forgiving
- appreciative of diversity
- welcoming
- a peace-filled mediator
- respectful of the talents and abilities of others

A life-long learner who is:

- articulate
- creative
- technologically literate
- academically and spiritually competent
- a critical thinker
- a problem solver

A healthy person who is:

- respectful of life
- practicing good health habits
- committed to reaching one's full potential
- a good sport

As we describe the faith commitment of the Catholic School graduate, we understand that students of other faiths express these values in alternate faith commitments.

MISSION STATEMENT

Our mission is to keep Christ at the center of all that we do. In solidarity with our parish and school community, we will inspire our students through inclusive, innovative, and challenging academic and spiritual experiences, to be leaders capable of making a positive change in the world.

STATEMENT OF PHILOSOPHY

The purpose of St. Hilary School is to create a Christian educational community where a quality Catholic education is offered in an atmosphere enriched by Christian values and beliefs, sound and realistic discipline, and the dedication and concern of a qualified staff.

We have set our goals and organized our total curriculum to achieve this purpose. Underlying all our efforts to attain these goals is the belief that each of our students is a unique child of God. Our endeavor is to help them realize their God-given potential to its fullest. Only by working together — teachers, students and parents — can those goals be reached.

BELIEF STATEMENTS

We believe that it is our mission to help students continually grow in their faith by fostering solidarity through the rituals and traditions of our Catholic faith, and by providing opportunities for prayer, worship, Christian service, and leadership.

We believe it is our responsibility to uphold the human dignity of every person. Each person is made in the likeness and image of Christ with unique spiritual, intellectual, emotional, social, and physical gifts.

We believe that students learn best in a safe, inclusive, and nurturing environment, enriched by a variety of individualized instructional and assessment methods.

We believe that our school is most successful when we work collaboratively with parents and other community advocates.

We believe that student-driven critical thinking, problem solving, and the integration of technology are essential to the educational development of a student in our world today.

We believe that creative expression through visual and performing arts is important to the cultural and global education of the whole child.

We believe that students can and must be inspired to be life-long learners and leaders who treat others with kindness and respect.

We believe that our students have the ability to persevere through adversity and that natural consequences are essential for personal growth.

STUDENT ADMISSION AND NON-DISCRIMINATION POLICY

The Admission Policy of St. Hilary School is in accordance with the student acceptance regulations of the Diocese of Cleveland. St. Hilary School admits qualified students of any gender, race, color, national and ethnic origin to all the rights, privileges, programs, and activities generally accorded or made available to students at the school. It does not discriminate on the basis of race, color, national and ethnic origin in administration of its educational policies, admissions policies, scholarship and loan programs, and athletic and other school-administered programs.

St. Hilary School is a Catholic parochial school within the Cleveland Diocesan School System, built and supported by St. Hilary Parish. The first responsibility of the school is to serve the families enrolled in the school and the parishioners of St. Hilary Parish. If the number of applicants exceeds the number of students who can be accepted while maintaining the quality of education, children will be accepted into St. Hilary School in this order:

1. The family has children enrolled in St. Hilary School.
2. The family is registered at St. Hilary Parish.
3. The child is coming from a parish with no school.
4. The child is coming from a parish with a school.
5. Non-Catholic children will be accepted if there is room available.

All applicants are expected to furnish at the time of application for admission a copy of the student's most recent academic progress report. If applicable, copies of testing data and special education plans must also be provided. Admission may be denied based upon a student's previous academic, behavioral or attendance record. Students applying for entry into kindergarten will be required to complete St. Hilary School's readiness screening unless waived by the school. All other students may be required to complete entrance or placement testing. Previous schools may be contacted and students and parents may be required to meet with the principal and/or pastor as part of the enrollment process. In order to ensure success for the student, St. Hilary School reserves the right not to admit any student who, in the discretion of the school, will be unable to meet the school's standards for academics, behavior and attendance.

KINDERGARTEN ADMISSION

A student must be five years old before September 30. Each student will be required to attend a screening which is not an "entrance exam," but a tool to help the teachers better understand the child and to help assess the child's readiness to start school.

SCHOOL PERSONNEL

The St. Hilary School community is made up of many persons who are dedicated to the vital role of contributing positively to each child's education.

They include the following:

Pastor
 Parochial Vicar
 Principal
 Assistant Principal
 Classroom Teachers
 Teaching Assistants
 Physical Education Teacher
 Instrumental Music Teacher
 Vocal Music Teacher
 Art Teacher
 Technology Teachers
 Advanced Math Teacher
 Spanish Teacher
 French Teacher
 Chinese Teacher
 Guidance Counselor
 Intervention Teacher
 Speech Therapist
 Auxiliary Clerk
 School Secretaries
 Custodians
 Nurse
 Librarian
 Enrichment Art Teacher
 Enrichment Music Teacher
 Gifted and Talented Teacher
 Behavioral Interventionist
 Occupational Therapist
 Director of Marketing & Admissions

The school is staffed by lay teachers and one religious. All members of the staff have the proper training and certification to fulfill their roles.

SCHOOL HOURS

School supervision begins at 8:00 a.m. Please do not send children before this time, unless they are being supervised in our morning extended care program. The first bell rings at 8:20 a.m. Classes begin at 8:30 a.m. All children are to leave the building at 3:05 p.m., unless under adult supervision. Any unsupervised child remaining in the building after 3:30 p.m. will be sent to our afternoon extended care program and parents will be billed accordingly. Please see the separate section on extended care for more information about this service.

ABSENCE

Regular attendance and punctuality are important in developing habits and attitudes of responsible behavior. If a student is absent, state regulations require parents/guardians to notify the school office by phone as soon as possible to report the absence. If the school office has not been notified of the absence by 10:00 a.m., the school office will initiate a call to parents. Parents may leave a message 24 hours a day. The attendance line is (330) 867-8720 ext. 350. To help us track illness in the school, please do not simply say your child is sick, but specify the reason for the absence; i.e., fever, vomiting, etc. If the absence is due to a reason other than illness, please indicate that as well. Requests for homework must be made at the time of your call to report the absence or no later than 10:00 a.m. We will not be able to accommodate your request after that time.

In the case of an excessive number of absences (fifteen or more per semester), parents will be notified by the school office and a conference will be set up. This notification serves as a reminder that the child may be considered for non-promotion due to the extreme number of absences. In order for a quality learning experience to take place, the child needs to be present in school. Students who are absent from school should not attend after school activities. A student who is absent for consecutive days due to illness may be required to submit a note from the doctor.

TARDINESS/EARLY DISMISSAL

Since tardiness can interfere with the child's progress in school and can be disruptive to the class and teacher, parents are requested to nurture and cultivate the habit of punctuality and good attendance with their child. Tardiness to school and early dismissals will be treated and documented the same way, in that the student is missing classroom instruction. Repeated tardiness will be called to the attention of the parents by the homeroom teacher and on the third unexcused tardy in one quarter, a Minor Infraction Notification will be issued. Students are not considered tardy if their school bus arrives late at school. It is our

expectation that students will arrive by 8:20 a.m. This bell signals our morning arrival time, at which students proceed to classrooms and prepare for the day. The 8:30 a.m. bell is not intended to provide a ten-minute grade period after the 8:20 a.m. arrival bell, but signifies the point at which students are marked tardy. Please help your child prepare for the school day in a stress-free manner by ensuring that he or she arrives at school by 8:20 a.m. each day.

- LATE ARRIVAL – if a student arrives at school after 8:30 a.m.
- HALF-DAY ABSENCE – if a student arrives after 10:00 a.m., he/she will be marked for a half-day absence; if a student leaves before 2:00 p.m., he/she will be marked for a half-day absence
- ABSENT – if a student is not present in school for a full day, for any reason, the student is considered absent
- EARLY DISMISSAL – if a student departs school after 2:00 p.m. he/she will not be marked for a half-day absence

APPOINTMENTS

If a student has an appointment, please notify the office (in writing or phone call) the morning of the appointment. The student will then receive a pass to present to the homeroom teacher and/or classroom teacher so he/she can leave class at the appropriate time. If at all possible, appointments with doctors and dentists should be made outside school hours. When necessary, students may be excused from classes at the written request of the parents.

FAMILY VACATIONS

Vacations taken during school time are strongly discouraged. However, if vacations are taken, parents should give the school office and homeroom teacher written notification of the child's impending absence. **After the vacation the student should set up an appointment with the teacher to obtain all make-up work. Teachers are not obligated to prepare or assign any work prior to the vacation.** Students are responsible for the mastery of material presented during their absence and are expected to check for assignments on Gradelink.

HEALTH AND ACCIDENT RELEASE

In case of illness or an accident, and if the student needs to be sent home:

- Parents will be notified as soon as possible and should come to school to pick up the student. If the parent cannot come, he or she is to send a representative to take the student.
- Emergency Medical Authorization forms should indicate the names of the persons to contact should it be impossible for the school to reach the parent.
- A student may be released from school (with permission by authorized personnel) only to his or her parents or other authorized person(s). In special instances (separation, lawsuit, etc.) the child may be released only to the parent who is the legal guardian. Parents are to send a copy of that part of the divorce papers that indicates the name of the person who is legally responsible for the student. Otherwise the school and the employees cannot be held responsible.
- Students must be signed out by the authorized person(s) in the Sign-In/Sign-Out binder. ***No persons are permitted to go to the classroom to pick up or to return a child.***
- No student may leave school grounds during the day without the permission of his or her parents and the approval of the school principal, and unless accompanied by an adult.

DISCIPLINE

Anti-Harassment, Anti-Intimidation and Anti-Bullying Policy

St. Hilary School teaches belief in the sanctity of human life and the inherent dignity of the human person. We believe that all students have a right to a safe and healthy school environment. All members of the school community, in turn, have an obligation to promote mutual respect, tolerance, and acceptance.

Harassment, intimidation, or bullying behavior by any student in St. Hilary School is strictly prohibited and such conduct may result in disciplinary action, including suspension and/or expulsion from school. "Harassment, intimidation, or bullying," in accordance with House Bill 276, means any intentional written, verbal, graphic, or physical acts including electronically transmitted acts i.e., internet, cell phone, personal digital assistant (PDA), or wireless hand-held device, either overt or covert, by a student or group of students toward other students with the intent to harass, intimidate, injure, threaten, ridicule or humiliate. Such behaviors are prohibited on or immediately adjacent to school grounds, at any school sponsored activity, on school-provided transportation or at any official school bus stop that a reasonable person under the circumstances should know will have the effect of:

1. Causing mental or physical harm to the other student including placing an individual in reasonable fear of physical harm and/or damaging of students' personal property; and is sufficiently severe, persistent, or pervasive that it creates an intimidating, threatening, or abusive educational environment for the other student.

St. Hilary School will not tolerate behavior that infringes on the safety of any student. A student shall not intimidate or harass another student through words or actions whether in the classroom, on school property, to and from school or at school-sponsored events, or from any computer on or not on school property.

Definition

“Harassment, intimidation or bullying” means any intentional written, verbal, graphic, or physical act that a student or group of students exhibited toward another particular student more than once and the behavior both:

1. Causes mental or physical harm to the other; and
2. Is sufficiently severe, persistent or pervasive that it creates an intimidating, threatening or abusive educational environment for the other. Such behavior includes overt intent to ridicule, humiliate or intimidate another student.

Examples of conduct that could constitute prohibited behaviors include:

1. Repetitive physical violence and/or attacks;
2. Repetitive threats, taunts and intimidation through words and/or gestures;
3. Repetitive extortion, damage or stealing of money and/or possessions;
4. Repetitive exclusion from the peer group or spreading rumors; and
5. Repetitive and hostile behavior with the intent to harm others through the use of information and communication technologies and other Web-based/online sites (also known as “cyberbullying”), such as the following:
 - a. Posting slurs on websites where students congregate or on web logs (personal online journals or diaries);
 - b. Sending abusive or threatening instant messages;
 - c. Using camera phones to take embarrassing photographs of students and posting them online; and,
 - d. Using websites to circulate gossip and rumors to other students;

Procedure for the Alleged Victim

1. Communicate to the harasser that the individual expects the behavior to stop, if the individual is comfortable doing so. If the individual wants assistance communicating with the harasser, the individual should ask a teacher, counselor, assistant principal, or principal to help.
2. If the harassment does not stop, or the individual does not feel comfortable confronting the harasser, the individual should go through the assistant principal or principal:
 - a. Fill out a Student Statement form and/or Peer Mediation form.
 - b. Tell a teacher, counselor, assistant principal, or principal.
 - c. Write down exactly what happened, keep a copy and give another copy to the teacher, counselor or principal including:
 - What, when and where it happened;
 - Who was involved;
 - Exactly what was said or what the harassment is;
 - What the student said or did, either at the time or later;
 - How the student felt; and
 - How the harasser responded.

STUDENT CODES

Code of Conduct

Compliance with the Student Code of Conduct should foster a positive and safe climate for learning and instill self-discipline motivated by Catholic Christian values. Students are to show Christian respect for all persons. Parental cooperation and support is of utmost importance. We believe that every child has the right to learn in an atmosphere conducive to learning. Such an atmosphere affirms and supports the loving witness of a Catholic faith community. The child's expected behavior should be a reflection of self-worth and one's respect for others. The child will assume responsibility for behavior that departs from this policy.

Teachers on each grade level shall establish specific guidelines for classroom behavior. These guidelines are posted in the classroom, communicated by the teachers to the students, and communicated to the parents at Curriculum Night.

If intervention is required, the classroom teachers will provide a structure to remind students of their expectations and to help students modify their behavior. Those students whose infractions exceed the limits of classroom policy will be subject to the structured policy that follows.

Minor Infraction Notifications/Detention System (enforced K-8)

Minor Infraction Notifications - MIN will be issued for actions that may include, but are not limited to:

- Repeated infractions of classroom policy
- Disrespect to an adult
- Disrespect to a peer
- Misbehavior during Mass, during morning and end of the day prayer, or at any school assembly
- Inappropriate use of the property of other students or adults
- Being away from an assigned area without permission
- Throwing objects or any unsafe actions (i.e. horseplay or rough housing)

- Misbehavior in the lunchroom or on the playground
- Misbehavior in the Multi-Purpose Room in the morning
- Dress code violations
- Gum chewing (in PE class, due to choking hazard, this warrants a detention)
- Unapproved use of cell phones, iPads, or other electronic devices
- Being unprepared for class
- Three (3) unexcused tardies

In grades K-5, Minor Infraction Notifications must be signed by a parent and returned to the homeroom teacher on the following day. In grades 6-8, parents will be notified via an email (per the parent email set up in Gradelink) of a Minor Infraction Notification.

Detentions are issued for more serious offenses or for multiple Minor Infraction Notifications. Actions that merit a detention may include, but are not limited to:

- Receiving three Minor Infraction Notifications in a quarter
- Failure to cease disruptive behavior upon issuance of a Minor Infraction Notification
- Defiant language, actions, or disrespect toward adults
- Using insulting or inappropriate spoken or written language
- Bullying
- Interfering with an individual's personal boundaries (physical or emotional)
- Vandalism
- Cheating
- Forgery
- Receiving a bus conduct slip (at the administration's discretion)
- Failure to serve a detention
- Dishonesty

In grades K-5, all detentions are scheduled by the administration.

- 1st detention in a quarter is served during lunch/recess
- 2nd detention in a quarter is served for 40 minutes before or after school
- 3rd detention in a quarter is served for one hour before or after school
- 4th detention in a quarter is served on a Saturday morning and a conference with the student and administration is required.

Note: For more severe infractions the administration may choose the time a detention is to be served.

In grades 6-8, all detentions are scheduled by the administration.

- 1st detention in a quarter is served for 40 minutes before or after school
- 2nd detention in a quarter is served for one hour before or after school
- 3rd detention in a quarter is served on a Saturday morning and a conference with the student and administration is required.

Note: For more severe infractions the administration may choose the time a detention is to be served.

Suspension and Expulsion

The following activities may be cause for suspension or expulsion:

- Vandalism: damage, defacement, destruction of school or personal property
- Possession, transmission, sale or use of drugs, alcohol, or look-alikes
- Possession of paraphernalia related to drugs and alcohol
- Transmitting or attempting to transmit prescription or non-prescription drugs
- Smoking or possession of tobacco products or cigarettes
- Weapons infractions
- Possession, use or threatened use of fireworks, smoke bombs, matches, lighters, or other incendiary devices or materials
- Setting a fire or attempting to set a fire
- Theft or unauthorized possession of school or personal property
- Fighting, assault or attempted assault, gang activity
- Bullying, harassment, hazing
- Truancy, repeated tardiness
- Gambling, trespassing
- Violating the *Internet Acceptable Use Policy*
- Cheating, academic dishonesty, plagiarism
- Falsely reporting incidents/falsifying records
- Bomb threats and false alarms
- Profane, indecent or obscene language
- Disruption of school
- Insubordination or disrespect

- Repeated disobedience, repeated and flagrant violation of the code of conduct, gross misconduct.

Note: Students who are suspended (out of school) or expelled may not be present on school property, participate in, or attend any school activities or contests, or be present at activities or on property controlled by the school.

THREAT POLICY

Any and all student threats to inflict any harm to self or others will be taken seriously. Whoever hears the threat should report it immediately to school authorities. The parent or guardian of the student who has made the threat will be notified. The parent or guardian of any student(s) who have been verbally mentioned as potential victims or listed in writing as potential victims will be notified.

Violations of this policy may warrant the following:

1. Application of Student Code of Conduct.
2. Suspension of the student until there has been a psychiatric evaluation (at parent expense) and receipt by the school principal of a written statement from a psychiatrist that the student is not/does not pose a danger to self or others.
3. Notification of the police. In addition, a student may be suspended or expelled for any actions that endanger the physical well-being of self or others.

Elastic Clause

Because it is impossible to foresee all problems which may arise, this clause empowers faculty and administration to take disciplinary action for any behavior which violates the spirit and philosophy of St. Hilary School even though not specified in this handbook.

CELL PHONES

Cell phones may be brought to a school or class activity under the following conditions:

1. Phones must be kept in the OFF position and in a concealed place. Teachers may collect the cell phones at the start of each day and keep them in a secured place in the classroom from 8:00 a.m. to 3:30 p.m. **Cell phones should not be in pockets at any time.**
2. No cell phones may be used for picture taking or sexting.
3. No harassment or threatening of persons via the cell phone is permitted.
4. Cell phones may not be used for game playing, texting, gambling or making purchases of any kind. Any cell phone use must be monitored by a staff member. Cell phones will be taken and turned in to the Principal or Assistant Principal. If warranted, disciplinary consequences will apply. For the first violation cell phones will be returned to the student at the end of school day. A second violation will result in the phone being confiscated and must be returned to a parent or guardian. The student will also be issued a detention.
5. Parents are not to text students during the school day. Please make sure your child has everything he or she needs for the day, including dismissal arrangements, before leaving for school. Changes to dismissal that occur during the school day are to be communicated to students via the school office at 330-867-8720, ext. 5, option 1. We ask that you do not call the office with dismissal changes after 2:30 p.m. unless it is an emergency, as it is very difficult to get messages to students during this busy, late point in the day.

INTERNET USER POLICY STATEMENT

We believe that technology is a vital means to assist those who carry out the educational ministry of St. Hilary School. It enhances student learning and provides a quality educational experience for all students during the school day or in any out of school activities. **A key foundation for our internet use by anyone in the St. Hilary School community, is that in all ways there is respect and protection of persons and privacy.** Each student and parent/guardian in grades K-8 must read and sign the Internet Acceptable Use Policy (handed out yearly). Additionally, each student and parent/guardian in grades 3-8 must read and sign the Chromebook Acceptable Use Policy (handed out yearly).

As with student cell phones, the use of school-provided Chromebooks will be carefully regulated to ensure responsible digital citizenship and student safety. In a non-COVID year, students in grades 6, 7 and 8 will be permitted to use their school-provided devices before school only in a designated area in the Multi-Purpose Room and only for school work. Those not working on school work will not be permitted to use their devices before school. We strongly encourage students to complete homework at home before coming to school and to use the time before school to socialize with friends before academics begin.

LUNCH / RECESS REGULATIONS

All parents are expected to provide a lunch for their children. To help facilitate this, the St. Hilary Parents' Association offers a daily hot lunch program, through which lunches may be ordered each month. Those not wishing to purchase a hot lunch may bring a lunch from home. A suitable lunch will be provided for any child who has neither ordered a hot lunch nor brought a lunch from home. A charge will be applied to the student's hot lunch account to cover the cost of each lunch provided. No student should hesitate to ask for a lunch when needed.

Playground and lunchroom responsibilities:

1. In the lunchroom, each student deserves a clean table and a pleasant atmosphere. We will not tolerate the following:
 - Throwing food, paper, or other items
 - Getting up from the assigned table without permission
 - Yelling
 - Rude behavior of any kind

2. Playground supervision is provided and students are expected to follow supervisors' instructions. The safety of the children on the playground is imperative. No game may jeopardize the safety of any person. We will not tolerate anything that is actually or potentially harmful, such as:
 - Throwing of snowballs, stones, dirt or other playground litter.
 - Climbing or hanging on parts of the building, baseball backstops, basketball hoops, bike racks, fences, trees, etc.
 - Eating on the playground.
 - Students are expected to use the equipment properly.
3. Once students have gone outside, they must stay outside. They may not come back in for forgotten clothes or equipment.
4. During indoor recess children must exit the lunchroom quietly and proceed to their homeroom in an orderly manner. Students must remain seated (at table, desk or on a carpeted area) and use a low "indoor" voice.
5. It is expected that students be polite and respectful in word and action toward each other and especially to the adults who are supervising.
6. Students may not use technology during indoor recess unless authorized by the teacher.
7. The school will not be responsible for torn or muddied clothing, or lost or broken play items.
8. Any student who violates the playground or lunchroom rules will be given a Minor Infraction Notification or detention as determined by administration.

In a non-COVID year, parents and grandparents are welcome to occasionally visit students at lunchtime. Please go to the office to sign in, take a visitor's badge, and then go to the lunchroom to meet your child. Once lunch concludes and recess begins, we ask that parents and grandparents, and especially siblings visiting along with them, not accompany students to the playground. For safety and supervision reasons, we need to limit those on our playground to our students and supervisory staff. In a non-COVID year, families wishing to play together on our playground are welcome to do so after school hours.

ACADEMIC PROGRAM

St. Hilary School follows the Graded Courses of Study prepared by the Cleveland Diocesan Education Office. These Graded Courses of Study Standards have the approval of the Ohio State Department of Education. The following is a partial listing of the basic curriculum:

- **Religion:** God's goodness, liturgy, commandments, sacraments, Old Testament, life of Christ, Beatitudes, Church history, the Creed, Catholic social teachings, and prayer.
- **English/Language Arts:** Listening, oral expression/drama, poetry, story-telling, parts of speech, sentence structure, grammar, punctuation, usage, paragraph structure, dictionary skills, creative writing, reports, essays, handwriting, and spelling.
- **Reading:** Auditory, motor and visual skills, phonics, decoding, comprehension, vocabulary, listening skills, library and study skills, reading in content areas, recreational reading, and study of the novel and short story.
- **Social Studies:** Communities, map/globe skills, U.S. history/geography, Latin and South America, history of civilization, countries of Europe and Asia, Ohio history, and American history/government.
- **Math:** Basic operations, numeration, problem solving, measurement, graphs, probability, statistics, basic geometry, and fundamentals of algebra.
- **Science/Health:** General science, matter, energy, earth science, life science, lab activities, community and personal health, safety, drug education, and human sexuality.
- **Physical Education:** Coordination activities, fundamental body movement, elements of various sports, physical fitness, and games for leisure and health.
- **Music:** Singing, music appreciation, music theory, and opportunities for performance.
- **Art:** Art theory, creative expression through various media, crafts, and art appreciation.
- **Technology:** Keyboarding literacy, computer assisted instruction, integration of technology with core curriculum, Power Point presentations, website design, Excel, and Google programs.
- **Foreign Language:** Vocabulary, conversational phrases, verb tenses, culture, and background.
- **Enrichment:** Storytelling, and visual and performing arts related to higher level thinking skills through reading, listening and creating.

Care of Instructional Materials

Since instructional materials are expensive to purchase and to maintain from year to year, parents are urged to help their children be responsible for materials used. Books and Chromebooks are to be kept covered and clearly identified. Parents are financially responsible for the loss or damage of materials.

RELIGIOUS EDUCATION PROGRAM

"Be it known to all who enter that Christ is the reason for this school, the unseen, but ever-present teacher in its classes, the model of its staff, the inspiration of its students." This is our aim, which we strive to make real in the following ways:

1. Daily religious instruction by certified religion teachers on staff
2. Preparation of and by the students for participation in liturgies and para liturgical services held throughout the school year:
 - a. School Masses and classroom prayer services
 - b. Penance celebrations especially during Advent and Lent

- c. Participation in Christmas and Holy Week services
- d. Sacramental preparation programs for Reconciliation, First Holy Communion and Confirmation
- 3. Opportunities for service to our community:
 - a. Missions – home and foreign
 - b. Remembrances for the sick and elderly
 - c. Service projects
 - d. Altar servers

CAREER ELECTIVES

Students in 7th and 8th grades participate in Career Electives. These electives help to develop future innovators and leaders who are capable of making the world a better place. Career Electives are offered by semester. Students can choose from a variety of classes that are subject to change based on the semester and year.

EVALUATION

Standardized Testing Program

St. Hilary School gives standardized tests to certain grade levels as follows:

- Dial 4 Test: administered before kindergarten; measures strengths and weaknesses in the various learning modalities (auditory, visual, kinesthetic)
- Measures of Academic Progress (MAP) Test: grades K-8; measures student knowledge and growth through a personalized assessment experience and administered three times a school year
- Cognitive Abilities Test (CogAT): grades 1, 3, 5, and 7; measures reasoning and problem-solving skills in three different areas: verbal, quantitative, and nonverbal
- Assessment of Catechesis/Religious Education (ACRE) Test: grades 5 & 8; evaluates the effectiveness of a religion program

Reporting to Parents – Grades 1 through 8

Keeping parents informed of the progress of their child is a vital responsibility of each teacher. Report cards are issued quarterly for grades 1-8 and Kindergarteners receive report cards twice a year. Interim progress reports are issued, if necessary, between report cards during the four quarters. Online viewing of grades is always available through Gradelink for families with students in grades 1-8. Formal parent-teacher conferences are in November. However, parents are urged to contact their child's teacher for a conference whenever a need arises. Teachers may be contacted by email or phone call (see faculty directory for extensions). Out of courtesy, please do not call a teacher at home.

HOMEWORK

Homework is meant to extend the learning begun at school, promote independent study, encourage individual initiative, and provide for the extra practice needed to perfect fundamental skills, make use of resources outside the school, and enrich learning. The length of homework assignments depends on the initiative and ability of the students and also on the type of assignment given. Long range assignments are often given to upper grade students to develop a sense of responsibility. Some type of homework should be done daily. Check your child's comprehension by listening to him or her read, then asking questions pertaining to the material read. When a written assignment is given, check to see if it is neat, correct, and complete. A definite time and place is advisable for home study. Assignment notebooks are provided by the school and should be utilized daily by all students in grades 1 through 5. Daily assignments for all grades are posted on Gradelink. Students in grades 6-8 will have their assignments on their iPads. Consequences for consistent missing assignments will be determined at each grade level.

GRADING SCALE:

The following grading scales have been approved by the Diocese of Cleveland and are used at St. Hilary School:

Grades K-3 (Specials)

O = Outstanding (100-98%)
S+ = Satisfactory Plus (97-92%)
S = Satisfactory (91-74%)
S- = Satisfactory Minus (73-72%)
N = Needs Improvement (71-70%)
U = Unsatisfactory (69% and below)

Grades K-8

A+ = 100-98%
A = 97-95%
A- = 94-93%
B+ = 92-90%
B = 89-87%
B- = 86-85%
C+ = 84-82%
C = 81-79%
C- = 78-77%
D+ = 76-75%
D = 74-72%
D- = 71-70%
F = 69% and below

HONOR ROLL

Honors will be awarded to students in grades 4-8 based on the student's GPA calculated from the seven academic subjects (reading, math, religion, English, spelling, social studies, and science), while maintaining a "C" or "S" in the special subjects (art, computer, foreign language, music, and physical education). A First Honors GPA traditionally corresponds to a student being in the top 10% of his/her class. A Second Honors GPA traditionally corresponds to a student being in the top 25% of his/her class.

First Honors	4.0 - 3.8 GPA
Second Honors	3.79 - 3.6 GPA

RETENTION

A child will be retained at a given grade level only if it is presumed that he or she will profit from the experience. Retention must have the prior approval of the principal and be accepted in writing by the parents. If parents refuse to have a child retained, refusal should be in writing and will become a part of the child's permanent record. The principal will then decide if the school can continue to meet the educational needs of the child, or if another educational setting is necessary. Each case of retention is treated individually and thoroughly discussed by the teacher, principal and parents. Parents will be notified if their child is in danger of failing.

DRESS CODE

2021-2022 St. Hilary School Dress Code

Effective August 2021

Personal appearance is as vital to a child's educational outlook as any other policy we have listed. Grooming and dress reflect attitudes which have a direct relationship to learning. Attention should be given to every detail of a child's appearance. All clothing (uniform and dress down/up) should be neat, clean, modest and appropriately sized. All clothing (uniform and dress down/up) should be free from holes, tears, and excessive fading. This applies to all students in grades K-8.

All of these guidelines are to be adhered to and will be enforced. Students who, after warning, continue to violate the dress code will receive a detention. Parents will be called to bring suitable clothes when necessary. The administration reserves the right to address any dress code situation not specifically listed here.

Our official school uniform supplier is Wear Number One (<https://wearnumberone.weebly.com/st-hilary.html>) All girls in grades 1-8 will be required to wear the correct St. Hilary plaid jumpers, skorts, or skirts from Wear Number One.



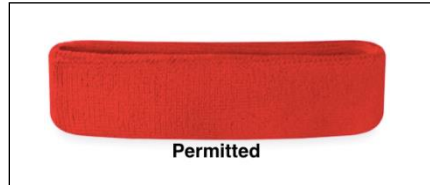
Kindergarteners are permitted to wear any closed-toe shoes. Kindergarteners are not permitted to wear heeled shoes, slippers, or flip-flops. All shoes must be less than 1/2". During quarters 1 and 4, kindergarteners may wear shorts. Kindergarteners are to adhere to the general dress code listed below.

GENERAL GUIDELINES – GRADES K - 8

No hats, caps, bandanas, or other headwear is permitted inside the school building unless worn on a designated spirit "hat" day. Navy, white, black, red, or St. Hilary plaid headbands (2" or less in width), bows or ribbons are permitted. The listed colors are the only colors permitted. Headbands may not have logos or ears.



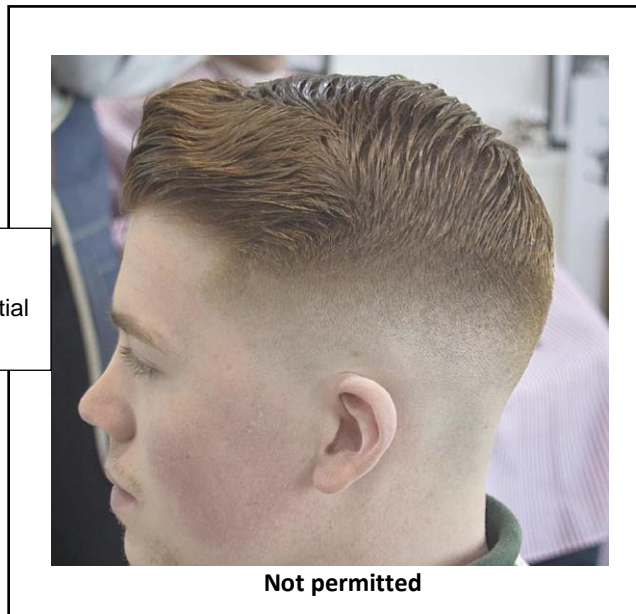
Photos are examples and not intended to represent every potential headband style.



Hairstyles should be clean, neat, and conventional in style and remain the student's natural color. Highlighting must be subtle and a natural shade of the student's hair color. Hair beading that is not excessive or distracting is permitted for girls. Fad or trend haircuts, shaved lines, tails, or bi-level cuts are not permitted. Young men's hair should be above the eyebrow, off the collar and at or above the opening of the ear; hair should be tapered with no excessive fullness. The difference between the length of the sides and back versus the top must be less than 2". Facial hair is not permitted for young men. Hair styles and length are subject to the administration's approval.



Photos are examples and not intended to represent every potential hair style.



Body piercing is not permitted except for a single ear piercing for girls. One pair of stud earrings for girls is permitted. No dangling earrings are permitted.

Boys and girls are permitted to wear one bracelet.

One simple religious necklace is permitted for both girls and boys. Scapulars are permitted to be worn under a student's shirt.

Tattoos are not acceptable, either permanent or temporary.

Nail polish that is clear – no color only – is permitted. All other nail treatments, including gel, shellac, French manicures, nail art, or artificial nails, are not permitted.

Analog or digital watches are permitted (without a calculator function). Smart watches are not permitted (including Apple watches, Fitbits, and similar brands).

Only school approved items listed within this dress code are permitted to be worn inside the classrooms. All other outerwear may only be worn during recess or for outside activities.

SHOES – GRADES 1 – 8

Shoes must be primarily brown, tan, black, navy, grey, or true red. Shoes must be closed toe and closed heel dress style shoes. Metallic colors are not permitted. All heels must be less than ½”.

Styles not permitted include, but are not limited to, plastic shoes, heelies, boots higher than ankle height, hiking style boots, white soles, clogs, sandals, crocs, mules, slippers, moccasins, and other fashion shoes.

Boots:

Men's Chukka boots and ladies' low ankle boots are permitted.



Not permitted



**Not permitted (white sole)
(If white sole, must be all
leather)**

Photos are examples
and not intended to
represent every potential
boot style.

**Permitted****Permitted****Sperry Shoes:**

Sperry AUTHENTIC ORIGINAL boat style shoes in these categories are permitted: Angelfish, Koifish and Songfish. The Sperry brand is the only shoe that can have contrasting soles. All shoes must be primarily brown, tan, black, navy, grey, or true red and may have a small pattern on the side of the shoe.





**Not permitted
(Canvas)**

Photos are examples
and not intended to
represent every potential
shoe style.

**Not permitted
(If white sole,
must be all leather)****Permitted****Permitted****Permitted**

Athletic Shoes:

Athletic or tennis shoes in leather, cloth, mesh, or canvas are only permitted if they are all black with black soles and with no contrasting logos.

	<p>Photos are examples and not intended to represent every potential shoe style.</p>	
 <p>Permitted</p>		 <p>Permitted</p>



SOCKS – GRADES 1 – 8

Socks or tights must be worn with all shoes; bare feet are not permitted. Socks must be solid navy, white, grey, or black. No multicolored socks are permitted. A small logo is permitted but Nike Elite type socks are not permitted. St. Hilary logo socks provided by Parents' Association are permitted to be worn on gym days.

PANTS – GRADES 1 – 8

Navy dress pants are to be worn in grades 1-5. Navy or khaki dress pants may be worn in grades 6-8. "Dress" means the absence of ornamentation (rivets). Obvious stitching (top stitching or double stitching), and outside patch pockets. All shirts must be tucked inside pants or shorts.

Low-rise, mid-rise, flared leg, or cargo pants are not permitted.

 <p>Permitted</p>	<p>Photos are examples and not intended to represent every potential pants style.</p>	 <p>Not permitted</p>
---	---	--

Navy dress shorts may be worn in grades 1-5, and navy or khaki dress shorts may be worn in grades 6-8, during the first and fourth quarters only.

Solid navy, brown or black leather or leather-like belts or navy elastic belts should be worn with pants or shorts with belt loops (for both girls and boys). Fad or cloth belts are not permitted.

SHIRTS AND SWEATERS – GRADES 1 – 8

Solid collared white, light blue, red, or navy dress shirts or polo shirts (long or short sleeved) are permitted. The St. Hilary crest is permitted, but not required, on dress or polo shirts.

Sweaters that are cardigan style and waist length are permitted. Sweaters longer than waist length are not permitted. Solid navy, true red, grey, or true white crew neck, cardigan, or V-neck sweaters or vests are permitted. Sweaters may not have any ornamentation such as lace, ruffles, beading, or logos. Rolled collar, buttoned neck, oversized, or hooded sweaters are not permitted.

Sweatshirts with the St. Hilary logo and 3/4-zip shirts with the St. Hilary logo are permitted.

White turtlenecks may be worn during the second and third quarters only.

Solid white undershirts or T-shirts may be worn under uniform shirts.

On Mass days, a button-down dress shirt with or without a complementary tie is permitted for boys.

ADDITIONAL GUIDELINES – GRADES 6 – 8 BOYS

A 3/4 zip St. Hilary pullover (available from Wear Number One) is permitted.

Dress pants may be khaki in color.

ADDITIONAL GUIDELINES – GRADES 6 – 8 GIRLS

Uniform skirts in St. Hilary plaid must be of a modest length not to exceed 4" from the middle of the knee. As girls grow throughout the year, be aware that skirts may need to be adjusted. Girls are expected to sit in a ladylike manner while wearing skirts.

A ¾ zip St. Hilary pullover (available from Wear Number One) is permitted.

Dress pants may be khaki in color in a non-stretch fabric.

GYM UNIFORM – GRADES 2 – 8

Students in grades 2 - 8 are required to wear the school gym uniform. This consists of a grey St. Hilary T-shirt (available through Wear Number One), solid black knit/nylon shorts that are mid-thigh in length and regular athletic shoes with non-marking soles. School sweatshirts must be worn over gym shirts and black sweatpants must be worn over gym shorts in quarters 2 and 3. The enforcement of the gym uniform dress code will be handled by the physical education teacher.

OUT-OF-UNIFORM AND SPECIAL DRESS DAYS – GRADES K - 8

If students choose to dress down or dress up, the following standards will apply. Otherwise, regular dress code standards will be enforced. Parents will be called to bring suitable clothing if out of uniform standards are not met.

Dress Code for Dress Down Days:

Permitted:

- Modest and appropriate relaxed attire
- Tennis shoes, jeans, shorts and t-shirts for boys
- Tennis shoes, jeans, shorts, t-shirts, dresses, skirts, athletic shorts and rompers for girls
- “Ripped” jeans are permitted as long as rips are small and at or below the knee
- Dresses and skirts must be of a modest length not to exceed 4” above the knee when measured from a kneeling position. These must pass the soda can test listed above. Shorts or rompers must come down to fingertip length on the thigh.
- Tank tops only when worn with sweaters, shrugs, or cover ups
- Open-toed sandals or crocs with a back or strap around the heel

Not Permitted:

- Crop tops and low-rise jeans or shorts
- Uncovered shoulders, including “cold shoulder” styles
- Sandals with no strap or back, clogs, or heels exceeding 1½ inches
- Hats (unless worn on a designated hat day)
- Leggings

Dress Code for Dress Up Days:

Permitted:

- Modest and appropriate attire
- Dress pants or shorts (quarters 1 and 4 only for shorts, modest cargo pockets permitted for pants and shorts) and collared shirts for boys
- Dresses, skirts, dress pants, dress shorts, or dress rompers (quarters 1 and 4 only for shorts, modest cargo pockets permitted for pants and shorts), collared shirts, or blouses for girls
 - Dresses and skirts must be of a modest length not to exceed 4” inches about the knee when measured from a kneeling position. Rompers and shorts must come down to fingertip length on the thigh.
- Sleeveless dresses or tops with a sweater, shrug, or cover up
- Open-toed sandals with a back or strap around the heel

Not Permitted:

- Tennis shoes (**except for Kindergarten students**) or sandals with no back
- Uncovered shoulders

Spirit Days:

Students may be granted the privilege of an administration-approved day on which to wear St. Hilary spirit wear. This day will be determined at the onset of each school year. On the approved day, students may wear only a St. Hilary spirit shirt with their regular school uniform pants or skirt.

ENFORCEMENT – GRADES K – 8

A violation of any part of the dress code will result in the issuance of a Minor Infraction Notification (MIN). Three dress code MINs will result in a detention.

**2021-2022 St. Hilary School Dress Code Contract
Grades 6-8**

Grooming and dress reflect attitudes which have a direct relationship to learning. Attention should be given to every detail of a child's appearance. All clothing (uniform and dress down/up) should be neat, clean, modest, and appropriately sized. All clothing (uniform and dress down/up) should be free from holes, tears, and excessive fading.

All of the guidelines contained in the dress code are to be adhered to and will be enforced. Students who receive three Minor Infraction Notices (MINs) for violations of the dress code will receive a detention. Parents will be called to bring suitable clothes when necessary. The administration reserves the right to address any dress code situation not specifically listed in the school dress code.

I have read and agree to abide by the provisions contained in the complete St. Hilary School Dress Code.

Student Name Printed

Parent Name Printed

Student Signature

Parent Signature

Date

Date

EMERGENCY CLOSINGS AND DELAYS

School will be closed in emergency situations as necessary. School closings will be announced on channels 3, 5, 19 and Fox 8, via email and automated phone system, and posted on our website and Facebook page. "St. Hilary School" will be specifically mentioned by name on all channels if closed. Parents and students are asked not to call the school or school employees concerning a possible closing. When a closing is not warranted, but conditions prevent a normal school start, a two-hour delay may be used.

Two-Hour Delay Procedure

In the event of a two-hour delay, school will begin two hours later than the normal start time; i.e., 10:30 a.m. rather than 8:30 a.m. There will be no morning Latchkey when a two-hour delay is in effect. Car riders should be dropped off no earlier than 10:00 a.m. Supervisors who were scheduled for regular morning duty will be on duty at their assigned locations by 10:00 a.m. Afternoon Latchkey will be in operation as usual. Students arriving at 10:30 a.m. may report directly to their homerooms. Students arriving after 10:30 a.m. should report to the office for a tardy slip.

Lunch periods will proceed as regularly scheduled, per *Alternate Schedule D* regardless of a two-hour delay.

Because busing is provided for St. Hilary School students by four public school districts (Copley-Fairlawn, Highland, Revere, and Woodridge), parents are advised to check the status of the district whose buses their children normally ride. If we receive notification of closings or delays from these districts, we will make every effort to pass that information along to you. However, these districts may not always notify us of closings or delays in a timely manner, so please be sure to watch for their closing or delay information along with ours. In nearly every case, if a public school district is closed, busing from that district will not be provided to or from St. Hilary School, but if a public school district is also operating on a two-hour delay, buses will typically be delayed two hours from their normal morning times. *Please confirm with the applicable public school district before dropping your child off at any morning bus pick-up location.* Students riding buses operating on a two-hour delay when St. Hilary School is on a normal schedule will not be marked tardy.

In regard to sports practices, please note the following:

If school is closed for weather or another non-scheduled issue, sports practices will be cancelled. If school is closed for a scheduled day off or break, sports practices may be held. If your child practices at a Copley facility and Copley has school when St. Hilary does not, practice may be held at the Copley facility. If your child practices at a Copley facility and Copley schools are closed for any reason, sports practices cannot be held there.

EXTENDED CARE

An extended care program is provided for students in grades K – 8 from 6:50 a.m. to 8:00 a.m., and for students in grades K – 6 after school until 6:00 p.m. on each day school is in session. Students will be supervised in their classrooms until dismissed to Latchkey at 3:20 p.m. The purpose of our extended care program is to provide a safe, happy and healthy environment for those children whose parents choose to use our before- and/or after-school care programs. Additional information may be obtained by calling 867-8720, ext. 230. Please note that any child not picked up from school by 3:30 p.m. will be placed under supervision in our extended care program and the child's parent will be charged accordingly.

FIELD TRIPS

Field trips are recognized as an important part of an educational program and can provide a valuable addition to the classroom curriculum. Notification of a field trip, fees and parental permission slips will be sent prior to the field trip date. Permission slips must be signed by the parent or guardian and returned to the school in order for the student to participate in the activity. This is the only form we are permitted to accept. Parent volunteer drivers for field trips must possess a valid **Ohio Driver's License** and sign a waiver. All students must wear seat belts. Per state law, children between the ages of 4 and 8 and 4' 9" tall or shorter must be buckled into booster seats. Drivers may not make unauthorized stops during the field trip. Candy, gum, food, and drinks are not permitted in parents' cars during field trips.

HEALTH AND ACCIDENT POLICY

The St. Hilary School Clinic is staffed by a registered nurse five days each week. The school furnishes an emergency authorization form on Gradelink which parents or guardians must complete to direct the school's course of action in each individual case. It is **essential** that the parent or guardian notify the school in writing of changes of address, telephone or employment throughout the school year so that this information is always up to date. ***The Emergency Medical Authorization form (EMA) completed by every family on Gradelink provides space for 3 alternate contacts if parents can't be reached. Please make sure these contacts are people who would be able to come to school to pick up your child if necessary. When a child is taken home, the adult taking the child must sign the child out in the school office.***

Medication Procedure

In compliance with the current State recommendation, a request form, available in the clinic, to administer over-the-

counter medications as well as prescriptions, must be completed by the student's physician and parent. If medication must be administered, we are hopeful that parents will have the form completed during routine visits prior to the beginning of the school year. **New forms must be completed for each school year.** A small recent picture of the child is to be attached to the request form. Each family must provide the medication that is to be used in its original container and labeled with the student's name. **All medications must be brought to the clinic by an adult. Likewise, all medications that are unused need to be given to an adult when the medication is no longer needed.** All medications not picked up will be disposed of at the end of the school year or within 30 days of the medication being discontinued. The first dose of a new medication may not be administered at school. These practices ensure that medication is given safely at school and we are grateful for your cooperation.

Use of Inhalers in the School Setting

If your student has need for an inhaler, he or she may keep this in the school clinic following the medication policy guidelines. Also, state law permits a student to carry an inhaler **after the completion of the form "self-medication for asthma inhalers" by the doctor and parent.** Forms are available in the school office and should be completed prior to the beginning of the school year if this is a concern for your student.

Health Services

Screenings for vision and hearing are conducted yearly in grades K, 1, 3, 5, and 7. Scoliosis screening is provided yearly in grades 5, 6, and 7. If you have concerns regarding your child's vision or hearing, please inform your child's teacher or the nurse and we will schedule him or her for a requested screening.

Immunizations

Pupils enrolled in K-12 are required to have written proof on file at their school that they have received the following immunizations:

- Kindergarten: 5 doses of DTaP, DTP or DT, or any combination.
- K-5: 3-4 doses of IPV (Polio). The final dose must be administered on or after the 4th birthday. 4 doses if a combination of OPV and IPV was administered.
- K-5: 2 doses of Varicella vaccine (chickenpox) must be administered prior to school entry.
- K-12: 2 doses of MMR (measles, mumps, rubella)
- K-12: 3 doses of Hepatitis B in its proper sequence of administration. The last dose must not be administered before age 24 weeks.
- Grades 1-12: 3-4 doses of DTaP, DTP, DT or Td or any combination.
- Grades 6-8: 1 dose of varicella vaccine (chickenpox) must be administered on or after the 1st birthday.
- Grades 6-12: 4 doses if a combination of OPV or IPV (polio) was given. 4 doses of all OPV or all IPV is required.
- Grades 7-11: 1 dose of Tdap vaccine is required prior to school entry.
- Kindergarten students are also required to have a physical form on file within the calendar year.
- For additional information please refer to the Ohio Administrative Code 5101:2-12-37 for School Attendance. These documents list required and recommended immunizations and indicate exemptions to immunizations.

Contagious Diseases and Illness

Students who give evidence of sore throat, severe cough, fever, nausea, vomiting, diarrhea, rash, swollen glands, abdominal pains, watering eyes, etc. should be kept home. Children who are ill should also refrain from participating in sports or attending other events where they risk spreading germs to others.

Parents shall notify the school the morning of the day of a student's absence by 10:00 a.m. **Students are required to present to their teacher a written excuse when they return, indicating the date and reason for their absence.** Parents are asked to contact the school nurse or principal when their child has been diagnosed as having a contagious condition such as strep throat or head lice. When your child has been home with an illness, he or she should not return to school unless he or she has been free of fever, vomiting, diarrhea, severe cough, and other contagious symptoms for 24 hours. The 24-hour symptom free period begins when the symptoms end. That means if your child has a fever, vomiting, diarrhea, severe cough, or other contagious symptoms today, he or she should not come to school tomorrow. In case of contagious illness, consult with your doctor as to when it is permissible for the child to return to school. If a contagious outbreak occurs in the school, you will be notified by letter.

Some of our students have compromised immune systems and are especially susceptible to contagious illnesses, so it is important that if your child is sick, he or she stays home. Your cooperation helps us to maintain a safe and healthy environment for all students.

HIGH SCHOOL VISITATION

Eighth grade students are encouraged to visit the area high schools on the scheduled visitation days or days when St. Hilary School is not in session. Each eighth grader will be permitted two excused days to shadow at high schools if necessary. These days, though excused, will be marked as absences, and teachers should be notified prior to the absence.

HOME/SCHOOL COMMUNICATION

E-mail communication is sent on a regular basis. The school website and Facebook page are updated regularly.

Office Telephone Hours

Telephone messages for teachers will be accepted from 8:00 a.m. to 3:00 p.m. Voice mail messages can be left at any time. Teachers' e-mail addresses are listed on the school website and in the school directory. In the event of an emergency after school hours, you may call the Latchkey office at 330-873-1282 until 6:00 p.m.

Emergency Messages to Students During School Hours

Parents are not permitted to go directly to a classroom. If it is necessary to deliver anything to the student, please report to the office first to determine how this will be done. Students learn to be responsible when forgotten items are NOT brought to school. Parents are asked not to bring or send any flowers, balloons, etc. to the school for any student. They will not be delivered to the student.

PARKING AND TRAFFIC

Please do not park in the Citizens Bank lot. Citizens Bank management has asked that we keep their lot clear for their employees and customers. Your cooperation is appreciated.

Handicapped parking spaces in the St. Hilary lot are designated for use only by those displaying an official handicapped parking placard issued by the Ohio BMV. This includes both parking and leaving a vehicle in a handicapped parking space and sitting and waiting in a vehicle in a handicapped parking space. Even if empty, these spaces are not available for the convenience of drivers who are running late for drop-off or pick-up, or who want to avoid inclement weather by parking closer to the school or church. Please be respectful of the law and of those who truly need these spaces and do not park or wait in our handicapped parking spaces unless you have the proper placard.

There is no parking in the red "box" area marked on the back parking lot.

Parking is never permitted on sidewalks at the school or the church.

The driveway that branches off from the main driveway and connects to Moorfield Road, passing near the Marian Shrine, will be closed from 8:00 to 8:30 a.m. each day, and extended to 10:30 a.m. on Fridays. This is to prevent cars from cutting others off in the drop-off line and to keep students safe when walking from school to church and back.

Please respect and follow the directional arrows and markings, including cross walks, that have been painted on our parking lot.

Please be sure to adhere to our drop-off and pick-up procedures, which have been established for the safety of your children.

Please follow the directions of the supervisors on duty.

Please be especially cautious when driving through the Fairlawn Heights neighborhood. The speed limit on all Fairlawn Heights roads is 25 mph and there are no sidewalks for pedestrians to use, so driving slowly and safely is imperative.

PHONE CALLS

Students are permitted to use the school telephones between 8:00 a.m. and 3:00 p.m. once per quarter to call home for a forgotten item. Please also see the policy regarding cell phone use.

In case of an emergency, if you need to get a message to your child, please call the school office. Transportation arrangements should be set before your child leaves for school in the morning. In the event of an emergency after school hours, you can call the Latchkey office at 330-873-1282 until 6:00 p.m.

SAFETY AND WELL-BEING

Reporting Child Abuse or Neglect - Ohio Revised Code, Section 2151.421, requires certain persons, including school personnel, to report all cases of suspected child abuse or neglect. The law also grants these persons immunity from criminal or civil liability as a result of such reports. The Children's Services Board of the Department of Human Services is the investigating agency for child abuse or neglect. St. Hilary School follows the law and cooperates with the Department of Human Services. The phone number for the Child Abuse hotline is 330-379-1880.

St. Hilary School has a comprehensive crisis plan in the event that a crisis should occur. All members of the crisis team have been fully in-serviced as to their roles in implementing the plan.

1. The Fairlawn Police Department maintains a frequent and visible presence on our campus.
2. Our school doors are locked at all times.

3. Visitors can enter the building through the main door entrance or Moorfield Road only after announcing their names and intentions utilizing our intercom system. For this reason, we need your cooperation in never allowing anyone to enter the building with you, no matter how familiar they seem.
4. There are signs posted on all of the entrance doors stating that only authorized visitors can enter the premises and that they must go directly to the school office to sign in and obtain a visitor's badge. At no time are visitors permitted to go directly to classrooms, and we appreciate your cooperation with this policy.
5. We have security cameras in place monitoring numerous exterior and interior locations at all times. These cameras record footage that can be reviewed later if needed. Our secretaries monitor these cameras on a large screen in the office, and can follow the whereabouts of anyone who does not report directly to the office.
6. Visitors are also expected to return to the office to sign out prior to departing the building. This provides a record of all individuals entering and leaving the building.
7. Staff members have been instructed to question any person in the school who is not wearing a visitor badge or looks out of place.
8. The teachers know the school emergency plan in the event that a stranger is in our building.
9. All classroom doors are locked during the day. Each room is furnished with an intercom call button to allow direct communication with the school office. Each teacher has a panic button that, if pressed, will alert local police and fire departments of an immediate life-threatening situation.
10. Classrooms are equipped with emergency kits that contain supplies needed in the event of a lockdown or other emergency situation.
11. During recess, our playground supervisor has a panic button and all playground monitors have cell phones to facilitate immediate communication in an emergency.
12. We have a staff member physically in place at our two main doors, near the Jesus statue and at Moorfield Road, at drop off and pick up times when traffic in and out of the building is at its peak.
13. The students have a monthly fire (evacuation) drill so that if they ever need to evacuate the building because of any threat, they can do so in an orderly fashion. The entire school also participates in periodic safety drills for other emergencies.
14. Our students reap the benefits of participating in various prevention programs throughout the school year: Fairlawn Fire Safety Program (grades K-4); Rachel's Angels; Choose Life (grades 6-8); Saber Sisters and Brothers (grade 6) PSI Life Act, Suicide Prevention (grades 7-8).
15. Our school has a guidance counselor who is skilled in child development and made available to a student upon request.
16. Our teachers are always available to listen to their students – often initiating conversations – when the teachers note student problems, unusual behavior, restlessness or depression.
17. Our Diocesan curriculum fosters Gospel values. Religion is taught daily and the students attend weekly school masses and regular prayer services.
18. Our school philosophy and mission statement reflect our goals for teaching the whole child – meeting and developing spiritual, academic and mental and physical needs.
19. Our school climate promotes respect for all staff members, teachers, and students, enhancing self-esteem.
20. Our discipline code promotes moral behavior. Compliance fosters a positive and safe climate for learning and instills self-discipline motivated by Christian values. We have a zero tolerance policy for student threats and they are taken very seriously.

Safety During the School Day

All visitors to the school entering the building for ANY REASON, including volunteering for Hot Lunch, dropping off forgotten lunches, assisting in classrooms, attending school assemblies and academic bees, or any other reason, MUST report directly to the school office and sign into the visitor log before going to any other part of the building. Please be sure that grandparents, older siblings and others in your family who may visit the school for any reason are aware of this procedure. This will enable us to know who is in the building at any given time and to maintain accurate records in case of an emergency. Visitors should also report back to the school office to sign out in the log book before leaving the building.

No visitor, under any circumstances, at any time, may hold the door open for another individual.

No student, under any circumstances, at any time, may hold the door open for anyone – this includes other students, the student's own parent, or any other person.

Anyone entering the school after hours for any reason must be accompanied by a staff member.

Anyone entering the Horning Hall area for practices or games must remain in the Horning Hall area.

Adults picking up a child from Latchkey must remain at the Latchkey table and may not enter the Multi-Purpose Room or roam around the school (inside or outside) unless given permission by a staff member. The Latchkey staff will bring your child to you. If a new caregiver will be picking up your child from Latchkey on your behalf, please notify the Latchkey staff prior, and make sure the caregiver has his or her ID ready to be checked. The Latchkey program can be reached at 330-873-1282.

Safety During School Masses

During school Masses, the following doors into the church will be locked at 9:35 a.m.:

West Market Street doors at the back of the church;

Side doors adjacent to the Citizens Bank Parking Lot; and

Spiritual Center doors leading from the patio to the Gathering Area.

Those arriving after 9:35 a.m. will need to enter the building through the Parish office doors, passing through the Gathering Area to enter the church via the door by the Sacred Heart Library.

SEARCH AND SEIZURE

Student lockers, desks, cabinets, and similar property are the property of St. Hilary School and provided to students as a convenience for their use. Lockers and other such property carry no expectation of privacy for the students who occupy them. School lockers, desks, cabinets, etc. and their contents are subject to search by school authorities at any time and without warning.

SOCIAL SERVICES AND FACILITIES

Guidance Counseling

Guidance counseling services are available. To initiate services please consult your child's homeroom teacher. The guidance referral may be made by the assistant principal, a teacher and/or parent after consulting with the principal. Any report requested by an external medical professional will be completed by the classroom teacher and mailed directly to that professional. Parents should not request copies of these documents. Guidance counseling services are available at the request of the student, parent, or teacher.

Students with Learning Differences, Remedial Scholarship and Supportive Instruction

St. Hilary School is a Better Together school and an Autism Scholarship and Jon Peterson Scholarship provider. Progress Reports and specific progress on the IEP goals of all students on the Autism Scholarship is reported to the Ohio Department of Education. These reports are made available to the parents through the use of email, phone messages, and personal interaction.

Individual and small group instruction in reading and math for children with special needs is given by an intervention specialist, and an occupational therapist and a behavior interventionist are on site, contracted through a third party. It is the goal of this program to help these children strengthen their skills to achieve success in the regular classroom.

Response to Intervention (RTI) Team

This team consists of administrators, a guidance counselor, and auxiliary and classroom personnel as needed. The purpose of this team is to meet weekly to discuss individual student needs and to create an educational plan that will best support student learning. Further, the team provides support to the classroom teacher to implement the learning plan.

Speech and Language Therapy

A speech and language therapist identifies children who may have communication disorders. All students are screened in areas of speech, language, voice, fluency, and hearing. Teachers, the principal and parents may also refer children at any grade level for evaluation in these areas. Additional diagnostic evaluations are administered to each child who is identified from the screenings as having a problem. The nature of the problem and the plans for remediation are discussed with parents prior to initiating therapy. Therapy begins in the fall and continues until late in the school year. Parents are involved in helping the child use the new speech and language behaviors in the home environment.

Library/Media Center/Makerspace

Subject to COVID protocols, all classes (grades K through 8) visit the library/media center/makerspace for various times to learn library skills, to withdraw books, engage in research, read for pleasure, work on class projects, complete homework, create, play, invent, tinker, and explore.

- Grades K-5 – two 30-minute classes / week
- Grades 6-8 – one 45-minute class / week

Additional library/media center/makerspace times are also available.

TRANSPORTATION

Busing

Some of our children are transported under the provisions of the Ohio Fair Busing Law. Only children eligible for bus service are permitted to ride the buses. Students may not ride buses other than the one assigned to them. Students at times ask to ride buses home with their friends. Please help us remind your child that he or she cannot ride a bus home with a friend, and he or she cannot simply hand a note to the driver of the bus he or she intends to board in the afternoon, even with a phone number listed.

Each district notifies parents of routes and schedules in August. The public school district in which you reside will receive a copy of your emergency information. If your child is late arriving home, call the bus transportation department. The bus driver is in complete authority and will report all violations to the school principal or assistant principal. Anyone violating safety rules or creating a disturbance may be denied the privilege of school transportation for a specified period of time and/or receive disciplinary consequences at school.

Bicycles

Students may ride bicycles to school provided they follow common safety rules. Immediately upon arrival at school, the student must lock the bicycle in the rack. Students are not permitted at the bicycle rack during the day. The school assumes no responsibility for damaged or stolen bikes. Roller blades, scooters and skateboards are not permitted on school property.

Walkers

Because of the number of cars arriving at and leaving school grounds, walkers are asked to exhibit extreme caution. Written permission must be on file in the principal's office before a student can walk home. This permission must be updated each school year. They should cross streets only at crosswalks and walk on sidewalks if possible. Otherwise, they should walk facing the traffic. Parents are asked to make sure that the walkers know safety procedures for getting home.

Cars

Drivers are asked to follow school rules carefully in order to ensure the safety of all students.

Drop-off procedures: Traveling north on Moorfield Road, parents should drop off students at the front doors. Students may also be dropped off at the main doors, near the statue of Jesus and the children on the parking lot side of the building. Cars may park in the parking lot. Parents are required to walk their child into school. The crosswalks are the only places where parents and students are permitted to cross. The students should walk to the multi-purpose room where supervision begins at 8:00 a.m. and sit quietly in the Multi-Purpose Room until the bell rings. Please also note the following:

- Students may exit vehicles only when vehicles are in the marked drop-off zones on either side of the building.
- Students may exit vehicles only from the passenger side due to moving traffic on the driver side of vehicles dropping off students. You may need to adjust car seat placement.
- On the parking lot side of the building, the cross-walk area must remain clear for pedestrian crossing. This is NOT a drop-off zone.
- On the parking lot side of the building, the area near the fire hydrant and the church sidewalk are NOT drop-off zones.
- On the Moorfield Road side of the building, after students exit vehicles, they should walk closest to the grass, not the street.
- Please instruct your child that once he or she exits the vehicle, he or she may not return to it for any reason. If an item is forgotten in the car, he or she may go directly to the office for assistance in promptly contacting the driver who dropped him or her off. If an item is dropped or a car door is not closed, a staff member on duty will assist.
- During drop-off and pick-up times, we are a CELL PHONE – FREE CAMPUS. Please refrain from using your cell phone in your vehicle during this time.
- If you find these procedures to be cumbersome, please remember that you always have the option of parking your car and walking your child to the building. Students are not permitted to walk from the parking lot to the building alone.
- Cooperation with these procedures and with our staff members on duty is expected and appreciated. **THESE PROCEDURES HAVE BEEN IMPLEMENTED FOR THE SAFETY OF YOUR CHILD!**

Pick-up procedures:

- a. **Parking lot** – Car riders will be dismissed at 3:05 p.m. Parents must drive in the “pick-up line,” and have the student enter the car. If a parent is at the front of the line and the child is not there waiting, he or she should park the car in the designated lot and not hold up the entire line of cars. No car may stop on West Market Street. **Cars are never permitted to be parked on sidewalks.** Drivers must remain in cars in the pick-up line. No student may ever walk into the parking lot alone.

Kindergarten students must be picked up at the back parking lot (near the basketball hoops, across Blue Ribbon Drive). An adult will escort all Kindergarten students to this area at dismissal.

A large red “box” has been painted on the back parking lot to help designate the area that will serve to keep parents and students safe during pick-up. Parents are asked to stay in the designated red “box” while waiting for children to exit the building at the end of the day. There is no parking in this area. Parents and students must stay in the designated area until they are ready to walk to their cars together. Please pay attention and limit distracting conversation with other parents so that you can monitor your children as cars are backing out and exiting the parking lot.

- b. **Moorfield Road** – Students riding buses will be dismissed at various times as buses arrive. During dismissal, Moorfield Road is reserved for buses only and siblings of high school students who ride public school buses.
- c. It is difficult to dismiss over 500 students quickly and safely. Parents and students are asked to follow the directions of the teachers and administrators on duty. Complete cooperation will help ensure the safety of all students. Please be sure your child knows how he or she is going home before he leaves home in the morning. Confusion at the end of the day causes tearful students and difficulty as the office staff tries to determine what arrangements parents wish to be followed. **If there is a change in the child's normal transportation procedure**, the school should be notified in writing as to how the child is permitted to go home. Please send a note to your child's teacher in the morning. **If, during the day, there is a change in your child's dismissal arrangements from what was decided in the morning**, please be sure to call the school office as early in the day as possible and a message will be given to your child. Please do not call the office regarding dismissal arrangements at the end of the day unless it is an emergency as dismissal is a very busy time and it is very difficult to reach your child with your message at this time in the day.

TUITION AND FEES

Tuition is determined yearly. Registered, active parishioners pay a percentage of the per pupil cost. A \$150.00 per student registration fee is required upon registration in order to reserve a place for each student, and this fee is non-refundable after June 1. This indicates your commitment to enroll your child for the coming school year. To help defray the cost of teaching assistants, there is an additional fee of \$150.00 for each Kindergarten student and an additional fee of \$150.00 for each first grade student. To help offset graduation expenses there is an additional fee of \$100.00 for each eighth grade student. An additional Parents' Association fee of \$25.00 is charged to each family. All tuition and fees must be paid in full for the school year before a student's final report card can be issued. All school records except for health records will not be transferred to another school unless all financial obligations are met.

VOLUNTEER PROGRAM

There are many opportunities for parents to become involved in activities at St. Hilary School. All volunteers visiting the school must check in at the school office and take a visitor's tag before going to their destination. No one is ever permitted to go directly to a classroom for any reason.

PARENTAL INVOLVEMENT RESPONSIBILITIES

The primary responsibility for the education of children belongs to parents. This responsibility is, however, shared with the school as a matter of practical necessity. The greatest single factor in building a child's intellectual, cultural and moral attitude is the example you provide in your home.

For a successful educational experience at St. Hilary School, we need your help in:

1. Giving good example in the practice of your faith and sincere prayer life.
2. Encouraging your children to complete all assignments.
3. Insisting that your child obey the regulations and principles of good behavior.
4. Building positive relationships between parent and teacher by contacting the teacher first when a problem or misunderstanding arises.
5. Following the policies and requests stated in the *Family Handbook*.
6. Paying tuition and fees on time.
7. Volunteering to help with fundraising activities.

Parental interest and involvement in any of these areas serve to enhance the responsible transfer of our Catholic Christian faith and meaningful traditions, which are our sacred trust to our posterity. At St. Hilary School, the faculty and staff expect to function as a support to you in your regular daily practice of the faith, not as a substitute.

DIOCESE OF CLEVELAND LEGAL POLICIES

FAMILY/CUSTODIAL SITUATIONS RELATIONSHIPS WITH THE SCHOOL

Two-Parent Families

In two-parent families, it is assumed that both parents are living at the same address unless we have been notified otherwise. School personnel will, therefore, send home notices, communications, etc., with the child. It is assumed that both parents are communicating regarding the child and that all information is shared by and between the parents. The information includes but is not limited to conference appointments, report cards, interim reports, discussions with school personnel, and tuition statements.

Separation

In families experiencing separation of parents or pending divorce, the above information will be sent home with the child to whichever parent currently has care of the child. It is assumed that this information is shared by the parents and between the parents. Since this situation frequently impacts on a child's achievement and interactions at school, parents are asked to inform both the principal and teacher of this fact so that appropriate support can be given to the child. School personnel cannot proceed on hearsay, rumors or demands of a parent, but only on the appropriate documentation as detailed below.

Custodial Parent

In cases of an actual divorce decree involving clear custody by one parent, the principal is to be informed by the custodial parent of this fact. A copy of the entire decree bearing the case number, the pages referring to custody and the relationship with the school,

and the final page bearing the judge's signature are to be submitted to the principal. Unless the decree indicates otherwise, school communications will be sent home to the custodial parent. Custodial parents should understand, however, that unless the divorce decree specifically limits the non-custodial parent's right to access records, the non-custodial parent has a right to the same access as the custodial parent. The school will, unless instructed by a Court Order, re-lease such records upon request to the non-custodial parent. However, we ask the custodial parent to cooperate with the school and share information, correspondence and conference appointments directly with the non-custodial parent. This avoids time-consuming duplication of services. Further, parents should realize that, unless restricted by Court Order, any non-custodial parent has the right to attend any school activity of the child which includes sports activities and class programs. Parents should keep each other informed as to these activities to avoid duplication of communications and to allow the school to better attend to the duty of teaching your children.

Joint Custody

In cases of "joint custody" entitling both parents access to school personnel and activities, it is assumed that one copy of communications and information will be sent home with the child and that this will be shared by and between the parents. Regarding parent conferences in all custody situations: It is preferred and will be the general procedure that one conference appointment be scheduled "jointly" if both parents wish to be present. It is assumed that parents are able to set aside differences and come together on behalf of the child for this time. A joint conference further insures that both parents are given the same information at the same time, thereby avoiding misunderstanding and misinterpretations. In cases where joint conferences are clearly neither possible nor desirable by all parties involved, alternate arrangements may be discussed with the principal. Every effort will be made to keep communications open with both parents while at the same time avoiding duplication of services and excessive demands on the teacher's time. Visitation should generally begin at the home of one of the parents and not at school. It is hoped that visitation arrangements would reflect the sensitivity of both parents to the consistency and routines that foster security in a child and allow for school responsibilities and homework to be taken care of during the school week. If there are questions concerning this restatement of procedure or circumstances you feel necessitate other arrangements, please contact the principal personally.

SEXUAL HARASSMENT AND SEXUAL VIOLENCE POLICY

Purpose

St. Hilary School is firmly committed to providing a safe, positive learning and working environment for everyone in the school. For this reason, and in keeping with the goals and objectives of Catholic education, St. Hilary School expressly prohibits sexual harassment and sexual violence in the school environment. This policy reemphasizes the personal dignity of the individual and fosters positive sexual attitudes and respect for others.

Sexual Harassment

For the purposes of this policy, sexual harassment includes, but is not limited to, the following specific instances: verbal sexual abuse; disseminating obscene or sexually explicit material, whether in the form of music, written lyrics, pornographic pictures or other literature, or having such material in one's possession in the school, on school grounds or at school-sponsored activities; obscene or sexually explicit graffiti anywhere in the school or on the school/parish grounds, continuing and unwanted written or oral communication directed to another of a sexual nature; spreading sexual rumors/innuendoes; obscene T-shirts, hats or buttons; touching oneself sexually in front of others; obscene and/or sexually explicit gestures; and any other inappropriate behavior of a sexually explicit or obscene nature that demeans or offends the recipient. The above list is not meant to be all-inclusive, but is intended to provide guidance as to what may constitute sexual harassment. Allegations of sexual harassment are to be reported to the teacher and the principal. Parents of both the offender and the victim will be informed of the allegations. The matter will be kept confidential by all parties involved, and every effort will be made to protect the alleged victim from retaliation. The parents of both the offender and the victim are obligated to cooperate in remedying the situation. If the allegations are substantiated, disciplinary action will be taken. These will depend on the nature, frequency and severity of the action, the ages of the offender and victim, the history of similar actions by this individual, and the circumstances in which the harassment occurred. Possible disciplinary actions may include, but are not limited to, any or all of the following:

- verbal warning/reprimand and apology to the victim,
- a parent/student/principal conference,
- written warning/reprimand and parent notification, entered in the student's file,
- detention or removal from selected school activities and/or extracurricular activities,
- behavior/probation contracts, possibly requiring professional intervention,
- suspension,
- expulsion.

WEAPONS POLICY

In furtherance of the overall philosophy, goals and objectives of the Catholic educational experience, St. Hilary School policy expressly prohibits the use, possession, sale or discharge of any weapons or explosive devices in the school, on school grounds, or at school-sponsored activities. This policy shall apply to all students, participants in parish programs, teachers, administrators, and other personnel in the school or parish. This policy includes, but is not limited to, any firearm, any dangerous object or object used as a weapon (look-alike weapon), knife, deadly weapon, or explosive or incendiary device. As defined by state law, a deadly weapon is "any instrument, device or thing capable of inflicting death, and designed or specifically adapted for use as a weapon, or possessed, carried or used as a weapon" (O.R.C. 2923). Firearms shall include any loaded or unloaded gun

of any caliber or type. This prohibition also includes any pistol, rifle, or other device that uses air or gas propelled projectiles. Violations of this policy may warrant notification of the police, immediate suspension, and possible expulsion. If possession of a weapon is suspected, the principal or other administrator should immediately contact the police department. If it is determined that the policy has been violated, the parents of the offender shall be immediately contacted and must cooperate with the disciplinary process. A model disciplinary process should include immediate in or out-of-school suspension, pending investigation and resolution. If the student's infraction does not warrant immediate dismissal, then the parents may be required to sign a probation contract that includes all conditions of the student's retention at the school. Possible terms of this probation agreement may include professional counseling, participation in a community program addressing youth violence, suspension from extracurricular activities, and any other conditions deemed appropriate by the administration of the school.

YOUTH GANGS

Youth gangs and gang-related activity are prohibited. A gang is defined as any non-school sponsored group, usually secret and/or exclusive in membership, whose purpose or practices include unlawful or antisocial behavior or any action that threatens the welfare of others. Gang activity includes: recruitment, initiation, a manner of grooming, hair style and/or wearing of clothing, jewelry, head coverings, or accessories which by virtue of color, arrangement, trademark or other attributes denotes membership in a gang, displaying gang markings or slogans on school or personal property or clothing, having gang tattoos, possessing literature that indicates gang membership, fighting, assault, hazing, extortion, establishing turf, use of hand signals, gang vocabulary and nick-names, possession of beepers or cellular phones, possession of weapons or explosive materials, possession of alcohol, drugs, drug paraphernalia, attendance at functions sponsored by a gang or known gang members, exhibiting behavior fitting police profiles of gang-related drug dealing, being arrested or stopped by police with a known gang member, selling or distributing drugs for a known gang member, helping a known gang member commit a crime, or any other action directly resulting from membership or interest in a gang.

Consequences

If a student is suspected or identified as being a member of a gang, shows interest in joining a gang, initiates or participates in any gang-related activity, or has been approached for recruitment, any or all of the following steps may be taken:

1. Parents/guardians will be contacted immediately and appropriate intervention initiated.
2. A behavior contract will be prepared stating the conditions for the student to remain in the school.
3. Students may be referred to counseling (personal and/or family).
4. Students may be referred to the Department of Children's Services or other welfare or child care agencies of the respective county.
5. Students may be referred to outside agencies or programs for treatment when use of drugs and/or alcohol is involved.
6. Police, Juvenile Court and other appropriate authorities will be notified of violence and/or illegal activities.
7. Students may be suspended and/or expelled as already outlined in the school discipline policies.
8. Parents/students will be held liable and financially responsible for any forms of vandalism.

Jurisdiction

Realizing that gang activity is a community concern communication will be maintained with the police department and public school officials on all matters related to gang activity within this community. Involvement and jurisdiction of school authorities in gang related incidents occurring outside the school or off school/parish property will be determined in cooperation with diocesan legal authorities and the police, and will take into consideration the nature of the incident, the safety of the students, the effect of the incident on other students, and the good order and functioning of the school.

Related Policies

In order to prevent the onset of gang related activity, the following related policies will be strictly enforced:

1. Dress code and uniform policy as defined in the *School Handbook*.
2. Discipline policies.
3. The right of school authorities to search lockers, student desks, and upon request, personal property, if suspicion of gang involvement exists.
4. Policies and procedures relative to scheduling, supervision and attendance at school/parish sponsored events, held during the school day, in the evening or on weekends, whether held on parish property or at other public facilities.
5. Policies and procedures relative to participation in and attendance at school/parish sponsored athletic functions whether held on parish property or at other public facilities.
6. Insistence on parent cooperation in not permitting children to host/attend unsupervised parties or activities.

PREVENTION

In order to assist students in the development of positive self-esteem, decision-making skills, and social values, appropriate educational programs and activities will be provided as judged appropriate by the pastor and/or principal. These may include but are not limited to LEAPER, Saber Sisters, PSI Life Act, Choose Life, guidance programs, parent education programs, social activities that foster positive group identification and behavior, CYO and parish based youth ministry activities, etc.

The rules and regulations in this *Handbook* are subject to change. These rules and regulations are not all-inclusive. It is the right of the principal, after consultation with the pastor, to make final decisions about an issue/incident that may not be specifically stated in these pages.

COVID-19 APPENDIX

Due to COVID-19, during the 2020-2021 and 2021-2022 school years, or for as long as the COVID-19 pandemic continues, certain provisions of this handbook will be superseded or modified by this COVID-19 Appendix. Please be sure to familiarize yourself with this information. We reserve the right to modify this Appendix as conditions change.

Of note are the following affected sections, listed in the order in which they appear in this handbook:

School Hours
 Absence
 Health and Accident Release
 Internet User Policy
 Lunch/Recess Regulations
 Appointments
 Career Electives
 Family Vacations
 Field Trips
 Health and Accident Policy
 Transportation
 Volunteer Program

If you are referring to one of the above-listed sections for information, please also check this appendix for a modification in response to COVID-19.

The school reserves the right to modify policies and procedures as needed as the COVID-19 situation continues and evolves.

CALENDAR:

First Day: August 23
 Last Day June 3
 Christmas and Easter Breaks remain as scheduled
 Other events cancelled / modified
 Updated calendar will be published August 1

TWO LEARNING OPTIONS THIS SCHOOL YEAR:

OPTION 1: Traditional on-site, in-person learning experience in our classrooms five days per week, incorporating health and safety modifications in accordance with COVID-19 guidelines. Includes the ability to phase into and out of distance learning as needed based upon health conditions in our building and/or as mandated by state or local officials. If you choose Option 1 (in-person learning) but need to switch to Option 2 (distance learning) you may do so at any time with notification to Mrs. Woodman or Mrs. Alexander.

OPTION 2: Full-time distance learning for students who are unable to safely return in person, or are uncomfortable returning in person. This will occur simultaneously with in-person instruction in classrooms. If you choose Option 2 (distance learning) you will need to stay with this option for remainder of quarter to provide consistency for your child and our staff.

ADDITIONAL NOTES:

SIMULTANEOUS LEARNING: Offers students the ability to attend classes in-person (Option 1) or online (Option 2) at the same time (synchronously). Our teachers are preparing to have both in-person students and distance learning students at the same time. We have been collaborating all summer to develop best-practices and have been engaged in professional development sessions with teachers. We are in the process of finalizing our distance learning guidelines and expectations and will be rolling these out soon. Keep in mind, our typical supports and services - guidance counselors and Intervention Specialists will still be available to students who are online.

CHOOSING BETWEEN OPTIONS: We know that your situation may change throughout the school year. You can opt into distance learning at any time, but cannot come back to in-person learning until a new quarter starts. Your child will not lose his/her place as a student if your family chooses Option 2. No matter if in person or online, your child is a St. Hilary School Student.

SCHOOL-DAY LOGISTICS

- Students will report directly to their homerooms upon arrival at school. Therefore, due to our inability to allow students to wait together in the Multi-Purpose Room before school, students should not arrive prior to 8:00 a.m. unless they are attending our morning Latchkey program. We will be unable to allow students into the building prior to 8:00 a.m. as we cannot allow students to congregate.
- Due to our inability to use the Multi-Purpose Room in the morning, students will be unable to use school-issued devices and work on homework in the Multi-Purpose Room before school. Completion of homework at home is strongly encouraged.
- We want to limit sharing of supplies. Please be sure your child has all of the supplies indicated on the supply list for his or her grade, and that his or her name is on every item.

- Forgotten lunches or other items may be left in the designated area at the main entrance after ringing the buzzer and notifying the secretaries that the item is being dropped off. All items must be clearly marked with the student's name and room number in order for staff to deliver the item to the student.
- Students will be eating in the classrooms, but we have given consideration to those students with severe allergies and will alter this plan as needed for them. Hot lunch will still continue, and will be modified for classroom delivery. Only students who have purchased milk and are listed on the milk order report for each classroom will be able to receive milk at lunch time.
- Every student will need to bring a water bottle. All of our drinking fountains have been sealed. Students will have access to bottle filler stations to refill water bottles, but your cooperation in sending enough water for your child to get through the school day is appreciated.
- Students in grades 6-8 will have individual lockers. Students in grades 3-5 will have shared lockers with minimal contact with one another's belongings. Social distancing will be practiced as students access lockers.
- For recess, we will get students outside, maintain safe social distancing, and give them a break from their masks.
- We will keep our specials classes, but limit shared materials. Students having gym class on a particular day will wear their gym uniforms (grades 2-8) to school and remain in gym uniforms for the entire school day to avoid having to congregate in the locker room to change clothes. We will not have career elective classes this year.
- In grades 5-8, we will follow our traditional schedules, but will have two cohorts of classes.
- With all grades, we will work to limit hallway travel and will have markings on the floor to help traffic flow and social distancing.
- We plan to operate our Latchkey program and are in the planning stages after recently receiving guidelines.
- Safety drills will proceed as usual, except that students will wear masks when exiting the building and will practice social distancing once outside.
- In order to minimize the number of people in our school, we will be limiting the number of volunteers allowed into our building. Similarly, we must unfortunately prohibit visitors during our lunch and recess times this year. Any individual who does visit our building for any reason will be assessed for symptoms and scanned for temperature.
- When a student needs to be picked up for an appointment or an early dismissal, with verbal permission from the parent, school staff will sign the student out in the log. The parent or other person picking up the child will pull up to the Moorfield Road doors and school staff will supervise (or escort if necessary) the student walking to the car. Parents or others picking up students will be permitted into the building only in the case of an emergency.
- We will not have any in-person all-school assemblies this year. We will also be limiting field trips and unfortunately, most will likely not take place.
- All of our typical in-person events such as Curriculum Night, 3rd and 6th grade Orientation, Kindergarten Kaleidoscope, Open House, etc. will be done virtually.
- We will continue to celebrate Mass together each week and on holy days. Each grade level (1-8) will plan several Masses as usual, but only the grade level planning the Mass will attend in person. Parents and grandparents of participants may attend but must sit in the back of the Church away from students. Masses will be live streamed and available for all to watch, and students not attending Mass in person will watch live streamed Mass from their classrooms. Eucharistic ministers will come to the classrooms to distribute Holy Communion. We will handle other religious services and events in a similar way.

TRANSPORTATION

- Four districts provide bus transportation for our students who reside in those districts: Copley-Fairlawn, Highland, Revere, and Woodridge. We anticipate that when the districts are providing in-person instruction and transportation for their own students, they will provide transportation for St. Hilary School students as well. If any of these districts move to online learning at any time, there is the potential that bus transportation for St. Hilary School students who ride the affected district's bus may be lost. We encourage all families to have an alternate transportation plan in place as this could happen without warning. For more information, you may contact the transportation departments listed below:

Copley-Fairlawn: 330-664-4820
 Highland: 330-239-1901, ext. 1235
 Revere: 330-523-3118 or 3119
 Woodridge 330-928-6312

- As we plan for the safe dismissal of over 500 students during a pandemic, we must consider not only our bus riders, but also our car riders and students whose families rely on the Latchkey after-care program. In order to ensure social distancing during dismissal, we will follow a staggered dismissal schedule as follows:

2:50 pm - Kindergarten students and their siblings

Non-Kindergarten Families Alphabetically by Last Name:

2:55 pm - Last names A-F
 3:00 pm - Last names G-M
 3:05 pm - Last names H-R
 3:10 pm - Last names S-Z

Students will not be released until their designated time, so it is important that you make every effort to arrive as close to that time as possible, rather than lining up far in advance. We also ask for your cooperation in picking up your child on time, or calling the

office in advance if you will be a few minutes late. In addition, we ask that the family last name of students being picked up be prominently displayed in the passenger side window of each car to help us efficiently match students with cars.

COVID-19 PROTOCOLS:

Vigilant Assessment of Symptoms

- DAILY health checks prior to going to school – assess for COVID-19 symptoms and take temperature
- Anyone with COVID-19 symptoms or a temperature above 100 degrees MUST stay home
- Everyone entering building will also be screened for symptoms and have temperature taken
- Students will be checked as they exit their car or bus
- We will also do a mid-day temperature check of staff and students

Face Covering Policy

- Face coverings **required** in school for all staff members and for all students in grades 3-8 throughout the school day
- ALL students will be required to wear a face-covering in high traffic/common areas like hallways
- We are asking families to provide masks for their children as you know the style of mask your child is most comfortable wearing. Writing and distracting patterns / logos will not be permitted. We are trying to give some leniency with masks, but do reserve the right to prohibit certain masks if they have an inappropriate pattern or logo. Students need a clean mask every day, with a spare mask in the backpack. During warm, humid weather, it is advisable to send several masks in case the mask becomes damp and needs to be changed during the day. Please put the student's name on all masks.
- Mask breaks will be provided as often as possible
- **If your child is not able to wear a mask due to medical reasons, you will need to submit a physician's note to the school office**
- The school will provide all students and staff with face shields to use in the classroom when applicable and necessary. We have been advised that face shields cannot take the place of masks, but can be utilized during certain subjects and situations as deemed by the teacher.

Social Distance

- We will implement the American Academy of Pediatrics recommended social distancing of 3 to 6 feet wherever possible in our classrooms. We know 6 feet is the gold standard and have moved out excess furniture in all classrooms to do this to the best of our ability. We've measured every learning space in the building and will spread students out as much as possible in our classrooms.

Hand Hygiene

- We will insist on hand-washing breaks for students and we will have hand sanitizer abundantly available for all, in classrooms and in high traffic areas.

Sanitize Highly Frequented/High Touch Areas Often

- Our cleaning and sanitizing procedures will be thorough. This is something we always take seriously and now we will ramp up our efforts even more. We'll disinfect surfaces frequently, paying close attention to high touch areas.

ABSENCE / RELEASE DUE TO ILLNESS OR INJURY / RETURN TO SCHOOL DURING COVID-19

Absence

- If a student is absent, state regulations require parents/guardians to notify the school office by phone as soon as possible to report the absence. If the school office has not been notified of the absence by 10:00 a.m., the school office will initiate a call to parents. Parents may leave a message on our answering machine 24 hours a day. The attendance line is (330) 867-8720 ext. 350.
- To help us track illness in the school, please do not simply say your child is sick, but specify the reason for the absence; i.e., fever, vomiting, etc. **This is especially important if the child has symptoms of COVID-19.** If the absence is due to a reason other than illness, please indicate that as well.
- **Any student who has any symptom of COVID-19 that has not been otherwise explained in writing signed by the student's physician (i.e. routine cough due to asthma or allergies, etc.) or who has a temperature above 100 degrees must stay home.**
- Requests for homework must be made at the time of your call to report the absence or no later than 10:00 a.m. We will not be able to accommodate your request after that time.
- Students who are absent from school should not attend sports or other activities.
- The policy on excessive absences will be suspended during the 2020-2021 school year and/or during the duration of the COVID-19 situation.

Release Due to Illness or Injury

- **Any student who, while at school, has any symptom of COVID-19 that has not been otherwise explained in writing signed by the student's physician (i.e. routine cough due to asthma or allergies, etc.) or who has a temperature above 100 degrees, will be sent home.**

- Parents will be notified as soon as possible if a student needs to go home for any reason of illness or injury and should come to school to pick up the student as soon as possible. If the parent cannot come, he or she is to send a representative to take the student. Emergency Medical Authorization forms must indicate the names of the persons to contact should it be impossible for the school to reach the parent.
- With verbal permission from the parent, school staff will sign the student out in the log. The parent or other person picking up the child will pull up to the Moorfield Road doors and school staff will supervise (or escort if necessary) the student walking to the car. Parents or others picking up ill or injured students will be permitted into the building only in the case of an emergency.

Return to School

Students returning to school after an illness will be allowed back into the building when the following conditions have been met:

- If the student has had a temperature over 100 degrees, he or she must be free of fever WITHOUT fever-reducing medication for a full 72 hours (3 days), UNLESS the student presents a written explanation signed by the student's physician indicating that the fever was due to an illness other than COVID-19, in which case the student may be able to return earlier. Otherwise, from the last point at which the student registered a fever, he or she must be fever free for a continuous, full 72-hour (3-day) period WITHOUT taking any medication to reduce the fever. The 72 hours or 3 days does not begin when the fever begins, but when the fever ends.
- If the student has been at home or was directed to stay home due to either (1) a positive test for COVID-19; (2) the presence of COVID-19 symptoms; or (3) due to close contact with another person with COVID-19, he or she must stay home for a period of time that will depend on the circumstances:¹

1. Your child is believed to have COVID-19 or tests positive, and has symptoms of COVID-19.² Your child may return to school when:

___ It has been 10 days since symptoms first appeared **and** at least 72 hours with no fever without fever-reducing medication, **and** other symptoms have improved.

OR

___ There is currently no fever, respiratory symptoms (if any) have improved, and you have received two negative test results in a row for your child, at least 24 hours apart.

2. Your child tested positive for COVID-19 but has no symptoms. Your child may return to school when:

___ 10 days have passed since the test and your child continues to have no symptoms.

OR

___ You have received two negative test results in a row for your child, at least 24 hours apart.

3. Your child has been in close contact with someone with COVID-19. Your child may return to school when:

___ Fourteen days have passed after exposure and your child continues to have no symptoms.

Parents must also sign the Student Return to School Acknowledgment and Certification Form found in the Red Folder on the school website.

- If the student has traveled out of the state or country or to a "hot spot" area even within the state of Ohio, the school must be notified prior to the student's intended return, and the school will follow whatever recommendations or mandates of the state and/or the Summit County Health Department may be in force at that particular time. Please be aware that if you plan travel for your child at any time during this school year and/or during the pendency of the COVID-19 situation, you risk your child potentially having to miss an extended period of time from school due to these requirements.

COVID-19-RELATED CLOSURE

- If there is a diagnosed case of COVID-19 in our school community, we will be in immediate contact with the Summit County Health Department. We will work closely with public health officials and follow their direction to take appropriate quarantining

¹ Return to school criteria are based on CDC recommendations as of July 21, 2020. The school reserves the right to require that additional or more stringent return to school criteria be satisfied in the event of a change in circumstances including without limitation a change in CDC or local or state government recommendations, guidelines, or requirements. In the event of a change the school will notify you as soon as possible.

² Symptoms listed by the CDC as of July 21, 2020 include fever or chills, cough, shortness of breath or difficulty breathing, fatigue, muscle or body aches, headache, new loss of taste or smell, sore throat, congestion or runny nose, nausea or vomiting, and diarrhea.

measures and to provide transparency in communication to the community, while also meeting our obligations to protect privacy. These situations will be addressed on a case-by-case basis.

- It is possible, and we believe **likely**, that we may be **ordered** back into a distance learning situation at some point during this school year. If this happens, our expectations will be set much higher than what was experienced in the spring. This would include required video conferencing, specific schedules, and attendance checks, among other elements. We are in the process of planning for this situation and will keep you updated.
- To make sure we're ready for this, we have ordered Chromebooks for grades 3-6, in addition to the 1:1 Chromebooks we currently have for 7th & 8th graders. We will do our best to work with families who are in need of devices.